



Sound Blaster Live! Value Sound Card User's Guide

[Safety Instructions](#)

[Introduction](#)

[Setup](#)

[Using the Sound Card](#)

[Software](#)

[Troubleshooting](#)

[Specifications](#)

[Internal Connectors](#)

[Regulatory](#)

Information in this document is subject to change without notice.

© 1998-2000 Creative Technology Ltd. All rights reserved.

Trademarks used in this text: Sound Blaster and Blaster are registered trademarks, and the Sound Blaster Live! logo, the Sound Blaster PCI logo, EMU10K1, E-mu Environmental Modeling, Environmental Audio, Creative Multi Speaker Surround, and DynaRAM are trademarks of Creative Technology Ltd. in the United States and/or other countries. E-Mu and SoundFont are registered trademarks of E-mu Systems, Inc. *Microsoft*, *Windows*, and *Windows NT* are registered trademarks of Microsoft Corporation.

Other trademarks and trade names may be used in this document to refer to either the entities claiming the marks and names or their products. *Creative Technology Ltd.* disclaims any proprietary interest in trademarks and trade names other than its own.

This product is covered by one or more of the following U.S. patents:

4,506,579; 4,699,038; 4,987,600; 5,013,105; 5,072,645; 5,111,727; 5,144,676; 5,170,369; 5,248,845; 5,298,671; 5,303,309; 5,317,104; 5,342,990; 5,430,244; 5,524,074; 5,698,803; 5,698,807; 5,748,747; 5,763,800; 5,790,837.

Version 1.00

July 2000

[Back to Contents Page](#)

Using the Sound Card: Sound Blaster Live! Value Sound Card User's Guide

[Using Sound Blaster Live! Value](#)

[Running MS-DOS games in Microsoft Windows](#)

[Selecting the Best Audio Options in a Game](#)

[Understanding the Installation Program in Windows 98 Second Edition](#)

[Understanding the System Resource Settings](#)

[Understanding the Environment Variables](#)

[Determining Resources](#)

[MS-DOS Mode Utilities](#)

[Changing Audio Card Settings](#)

[Creative Diagnostics](#)

[Back to Contents Page](#)

[Back to Contents Page](#)

Understanding the Environment Variables: Sound Blaster Live! Value Sound Card User's Guide

[Overview](#) • [CTSYN Environment Variable](#) • [BLASTER Environment Variable](#)

Overview

Environment variables are used to pass hardware configuration information to the software in your system. For MS-DOS, your audio card includes the following:

- CTSYN Environment Variable
- BLASTER Environment Variable

CTSYN Environment Variable

The CTSYN environment variable points to the location of the CTSYN.INI file, which usually resides in the Windows directory. The syntax for this variable is as follows:

```
CTSYN=path
```

where path is the location of the CTSYN.INI file.

BLASTER Environment Variable

The BLASTER environment variable specifies the base I/O address, IRQ line, and DMA channels of the SB interface. Its syntax is:

```
BLASTER=A220 I5 D1 H5 P330 T6
```

The parameters in the command are as follows.

This Parameter	Specifies
Axxx	SB interface's base I/O address.
Ix	IRQ line used by the audio interface.
Dx	First DMA channel used by the audio interface.
Hx	Second DMA channel used by the audio interface.
Pxxx	MPU-401 UART interface's base I/O address.

Tx Card type. x must be 6.

[Back to Contents Page](#)

[Back to Contents Page](#)

Regulatory: Sound Blaster Live! Value Sound Card User's Guide

[Safety Information](#) • [Notice for the USA](#) • [Notice for Canada](#) • [Compliance](#) • [Declaration of Conformity](#)

Safety Information

CAUTION: This device is intended to be installed by the user in a CSA/TUV/UL certified/listed IBM AT or compatible personal computers in the manufacturer's defined operator access area. Check the equipment operating/installation manual and/or with the equipment manufacturer to verify/confirm if your equipment is suitable for user-installed application cards.

ATTENTION: Ce carte est destiné à être installé par l'utilisateur, dans un ordinateur compatible certifié CSA/TUV/UL ou listé IBM AT, à l'intérieur de la zone définie par le fabricant. Consulter le mode d'emploi ou le fabricant de l'appareil pour vérifier ou confirmer si l'utilisateur peut y installer lui-même des cartes périphériques.

Notice for the USA

FCC Part 15: This equipment has been tested and found to comply with the limits for a Class B digital device, pursuant to Part 15 of the FCC Rules. These limits are designed to provide reasonable protection against harmful interference in a residential installation. This equipment generates, uses, and can radiate radio frequency energy and, if not installed and used in accordance with the instructions, may cause harmful interference to radio communications. However, this notice is not a guarantee that interference will not occur in a particular installation. If this equipment does cause harmful interference to radio or television reception, which can be determined by turning the equipment off and on, the user is encouraged to try one or more of the following measures:

- Reorient or relocate the receiving antenna.
- Increase the distance between the equipment and receiver.
- Connect the equipment to an outlet on a circuit different from that to which the receiver is connected.
- Consult the dealer or an experienced radio/TV technician.

CAUTION: To comply with the limits for the Class B digital device, pursuant to Part 15 of the FCC Rules, this device must be installed in computer equipment certified to comply with the Class B limits.

All cables used to connect the computer and peripherals must be shielded and grounded.

Operation with non-certified computers or non-shielded cables may result in interference to radio or television reception.

Modifications

Any changes or modifications not expressly approved by the grantee of this device could void the user's authority to operate the device.

Notice for Canada

This apparatus complies with the Class "B" limits for radio interference as specified in the Canadian Department of Communications Radio Interference Regulations.

Cet appareil est conforme aux normes de CLASSE "B" d'interference radio tel que spe'cifie' par le Ministère Canadien des Communications dans les règlements d'interfe'rence radio.

Compliance

This product conforms to the following Council Directive:

- Directive 89/336/EEC, 92/31/EEC (EMC)
-

Declaration of Conformity

According to the FCC96 208 and ET95-19

Name: ***Creative Labs Inc.***

Address: ***901 McCarthy Boulevard
Milpitas, CA. 95035
United States
Tel: (408) 428-6600***

declares under its sole responsibility that the product

Trade Name: ***Creative Labs***

Model Number: ***CT4830***

has been tested according to the FCC / CISPR22/85 requirement for Class B devices and found compliant with the following standards:

EMI/EMC: ANSI C63.4 1992, FCC Part 15 Subpart B

This device complies with part 15 of the FCC Rules.

Operation is subject to the following two conditions:

1. This device may not cause harmful interference, and
2. This device must accept any interference received, including interference that may cause undesirable operation.

Ce matériel est conforme à la section 15 des règles FCC.
Son Fonctionnement est soumis aux deux conditions suivantes:

1. Le matériel ne peut être source D'interférences et
2. Doit accepter toutes les interférences reçues, Y compris celles pouvant provoquer un fonctionnement indésirable.

Compliance Manager
Creative Labs, Inc.
June 9, 1999

[Back to Contents Page](#)

[Back to Contents Page](#)

MS-DOS Mode Utilities: Sound Blaster Live! Value Sound Card User's Guide

[Overview](#) • [SBECFG.EXE](#) • [SBEMIXER.EXE](#) • [SBESET.EXE](#) • [SBEGO.EXE](#)

Overview

The SB Live! Value card includes a few MS-DOS utilities. These utilities require the SB Live! DOS driver SBEINIT.COM to be loaded.

SBECFG.EXE

Use the SBECFG.EXE utility to obtain the hardware settings and the status of the SB Live! Value card. Typing `SBECFG . EXE` at the command prompt displays the following hardware settings:

- PCI Hardware Settings: Port, IRQ
- Sound Blaster Emulation: Port, IRQ, DMA
- MPU-401 Emulation (GM, Roland MT-32/LAPC-1) Emulation: Port
- Adlib Emulation: Port

The emulation settings appear only if they are enabled.

SBEMIXER.EXE

Use SBEMIXER.EXE to change the volume levels of the MPU-401 instrument set used on the SB Live! card. You can use SBEMIXER.EXE from the command line—useful for advanced users who want to set up batch files with particular volume levels—or within the SBEMIXER screen. The settings for SBEMIXER.EXE are independent of the Creative Mixer settings in Windows 98 Second Edition.

To set SBEMIXER values in the command line:

At the DOS prompt, type the SBEMIXER command in a single line. Its syntax is:

```
SBEMIXER [ /S:x ] [ /W:x ] [ /C:x ] [ /M:x ] [ /? ]
```

where square brackets [] denote optional parameters, and:

This Parameter	Specifies
-----------------------	------------------

- `/S:x` Synth volume. *x* can be a value from the range 0 to 127.
- `/W:x` Wave volume. *x* can be a value from the range 0 to 127.
- `/C:x` CD audio volume. *x* can be a value from the range 0 to 127.
- `/M:x` Synth MT-32/LAPC-1 mode. For *x*, 0 is Off, 1 is On.
- `/?` View a short description of the parameters.

An example of an SBEMIXER command is

```
SBEMIXER /S:64 /W:120 /C:50 /M:0
```

which corresponds to "set the synth volume to 64, the Wave volume to 120, the CD audio volume to 50, and turn off the Synth MT-32/LAPC-1 mode".

To set SBEMIXER values within the Mixer screen:

At the DOS prompt, type

```
SBEMIXER
```

The interactive editor mode allows you to change the mixer settings with the mouse, <Tab>, <PgUp>, <PgDn>, or arrow keys.

Use the Save button to save the settings for the next session.

SBESSET.EXE

Use SBESSET.EXE to manually configure SB resources or disable SB Emulation. By default, SB Emulation in DOS follows the Windows settings. For example, if you disable SB Emulation in Windows, in the next boot to DOS SB Emulation in DOS is disabled. Under rare circumstances you may need to manually reconfigure DOS SB Emulation, for example, if there is conflict in DOS before it can boot to Windows. SBESSET.EXE is run from the command line.

To set SBESSET values in the command line:

At the DOS prompt, type the SBESSET command in a single line. Its syntax is:

```
SBESSET [-Axxx] [-Ix] [-Dx] [-Hx] [-Pxxx] [-dx] [-wx]
```

where square brackets [] denote optional parameters, and:

This

Parameter

Specifies

- `-Axxx` SB interface's base I/O address.
- `-Ix` IRQ line used by the audio interface.
- `-Dx` First DMA channel used by the audio interface.

- Hx Second DMA channel used by the audio interface.
- Pxxx MPU-401 UART interface's base I/O address.
- dx SB Emulation mode. For x, 1 is Off, 0 is On.
- wx Set x to 1 to use the Windows-assigned resource configuration.
Set x to 0 to use (your) user-assigned resource configuration



NOTE: See ["Understanding the System Resource Settings"](#) for a list of the possible values.

An example of an SBESSET command is

```
SBESSET -A240 -I5 -D3 -w0
```

which corresponds to "set the SB interface's base I/O address to 240, the IRQ line used by the audio interface to 5, the First DMA channel used by the audio interface to 3, and use the Windows-assigned resource configuration".

SBEGO.EXE

Use this to confirm whether SB16 Emulation is properly installed and working.

[Back to Contents Page](#)

[Back to Contents Page](#)

Safety Instructions: Sound Blaster Live! Value Sound Card User's Guide

 **WARNING: Use of controls, adjustments, or procedures other than those specified in this documentation may result in exposure to shock, electrical hazards, and/or mechanical hazards.**

- Read and understand all instructions before using the sound card.
- To reduce the risk of electric shock, do not immerse the sound card in water or any other liquid.
- Never disassemble the sound card. This action could result in electrical shock.
- Service or repair work should be done by a qualified service person. Incorrect reassembly can cause electric shock.
- To keep from damaging your sound card, avoid exposing it to moisture and extreme temperatures.
- Do not attempt to disassemble, short circuit, or subject the sound card to high temperatures or fire.
- Use of an accessory attachment not provided or recommended by *Creative Technology Ltd.* may cause fire, electric shock, or injury.

[Back to Contents Page](#)

[Back to Contents Page](#)

Introduction: Sound Blaster Live! Value Sound Card User's Guide

[Overview](#) • [Features and Benefits](#) • [System Requirements](#) • [Getting More Information](#)

Overview

With the Sound Blaster Live!— the most powerful sound card ever—taking the industry by storm, Creative now introduces Sound Blaster Live! Value for the mainstream market. The casual PC entertainment enthusiasts and even the non-gaming music lovers can now enjoy the wonders of Sound Blaster Live!'s Environmental Audio. Sound Blaster Live! Value offers the same quality and performance of the highly successful Sound Blaster Live!—without the extended Digital I/O card—with features and performances surpassing professional audio equipment. Sound Blaster Live! Value incorporates the superior surround-sound rendering of Environmental Audio™ to create sound so real it has to be Live! You'll enjoy music productions so dynamic like you're right in the middle of an orchestra. The Sound Blaster Live! Value hardware-accelerated Environmental Audio Extensions™ (EAX™), supporting new titles, offers an experience that goes beyond 3D Audio. Add the ability to enhance all your existing games and legacy audio with true digital processing and it will blow your home theater away!

Features and Benefits

The Sound Blaster Live! Value Sound Card has the following features and benefits:

- *Hollywood-Quality Audio Re-creation*
With professional-quality synthesizers and digital I/O, Sound Blaster Live! Value provides audio fidelity that rivals movie theaters with digital sound. Excellent overall audio fidelity is achieved with an average Noise Floor of -120 dB, a level unheard of in the PC industry.
- *Powerful Audio Processing Engine*
The EMU10K1™ audio processor is the most powerful integrated music, audio and effects engine available. Every signal is processed at 32-bit, 192 dB, 48 kHz using 8-point interpolation to smoothen the sound, instantly improving any audio source. Apply real-time effects including Reverb, Chorus, Flanger, Echo, and Pitch Shifter, that rival stand-alone expensive professional effects processors.
- *Environmental Audio™ Enhances Existing Contents*
Experience depth and realism beyond existing 3D audio. Apply preset environments such as *hall*, *cave* or *underwater* that can be applied to your existing games and applications for incredibly true sound. Game environmental settings also make your existing games come "alive" instantaneously.
- *Multiple Speaker Output*

Produce surround-sound audio on your PC with built-in support for two or four analog speakers.

- *512-Voice Music Synthesis*

512-voice capability goes beyond the quality and performance available in most professional music equipment. Using host memory, you can choose from E-mu's 2 MB, 4 MB, or 8 MB SoundFont® professional-quality sample banks for music reproduction. Or use up to 32 MB of memory for amazing SoundFont music fidelity. All these without sacrificing on CPU utilization.

- *Sound Blaster PCI Standard*

You can be assured of near-perfect Sound Blaster compatibility on the PCI bus while enjoying all its benefits. It works with the existing MS-DOS®-based and Windows®-based titles, completely replacing your existing ISA sound card.

- *Environmental Audio Extensions™ (EAX™)/Broad Driver Support*

Environment Audio Extensions is an open standard that allows the broadest support from software developers. Supports Microsoft DirectSound®, DirectSound3D, and derivative technologies. Advanced architecture is ready for the coming generations of WDM, DLS, and IEEE 1394/Firewire devices.

- *Sound Blaster Live! Web site - www.sblive.com*

Exciting new applications and developer support will be available on the Sound Blaster Live! Web site. For instant access to the latest applications, enhancements, drivers, and more, visit www.sblive.com.

System Requirements

For Creative software, your card requires at least:

- Pentium® class 133 MHz or equivalent processor
- Windows 98 Second Edition, Windows Millennium Edition, Windows NT 4.0 or Windows 2000
- 32 MB RAM for Windows 98 Second Edition, Windows Millennium Edition, Windows NT 4.0,
64 MB RAM for Windows 2000
- 115 MB of free hard disk space
- One free PCI bus slot
- Powered speakers or external amplifier
- CD-ROM drive required for software installation

Sound Blaster Live! Value gives you an estimate of the hard disk space required when you select it on the installation screen. Some applications may require a system configuration greater than that listed above. Refer to online documentation (README or HLP files) or specifications on the outer box for details.

Getting More Information

See the online *User's Guide* for MIDI specifications and connector pin assignments, as well as instructions on using the various applications in your audio package. To access the online *User's Guide*, click the *Start* button, point to *Programs*, point to *Creative*, point to *Sound Blaster Live! Value* and select *User's Guide*.

[Back to Contents Page](#)

[Back to Contents Page](#)

Setup: Sound Blaster Live! Value Sound Card User's Guide

[Installing the Card and Related Peripherals](#)

[Positioning Your Speakers](#)

[Connecting Creative PC-DVD](#)

[Installing Software](#)

[Back to Contents Page](#)

[Back to Contents Page](#)

Installing Software: Sound Blaster Live! Value Sound Card User's Guide

[Installing the Software in Windows 98 Second Edition/Windows Millennium Edition](#)

[Installing the Software in Windows NT 4.0](#)

[Installing the Software in Windows 2000](#)

[Back to Contents Page](#)

[Back to Contents Page](#)

Using Sound Card Software: Sound Blaster Live! Value Sound Card User's Guide

[SB Live! Experience](#)

[Creative Launcher](#)

[Creative AudioHQ](#)

[Creative WaveStudio](#)

[Creative Recorder](#)

[Creative PlayCenter](#)

[Back to Contents Page](#)

[Back to Contents Page](#)

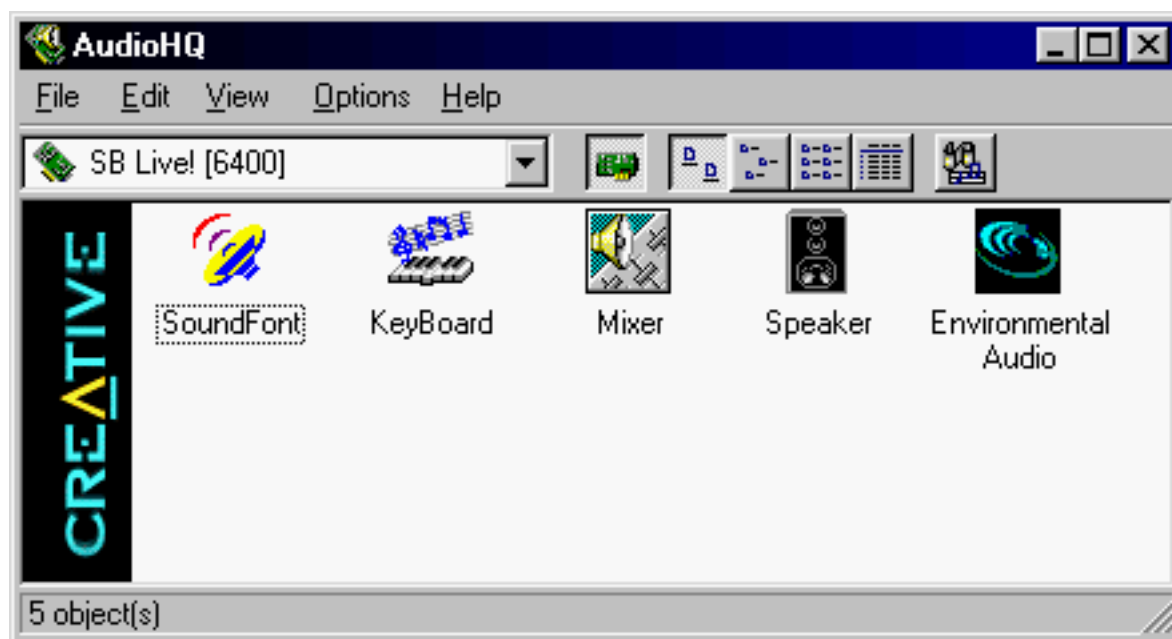
Creative AudioHQ: Sound Blaster Live! Value Sound Card User's Guide

[Overview](#) • [SoundFont Control](#) • [Creative Keyboard](#) • [Creative Mixer](#) • [Speaker Control](#) • [Environmental Audio Control](#)

Overview

AudioHQ can be accessed from Creative Launcher or by opening the Programs menu from the Windows taskbar-click the Start button, point to Programs, point to Creative, point to Sound Blaster Live! Value, and then click AudioHQ. AudioHQ uses the familiar Windows group to display the icon for each utility.

Figure 1. AudioHQ control panel.

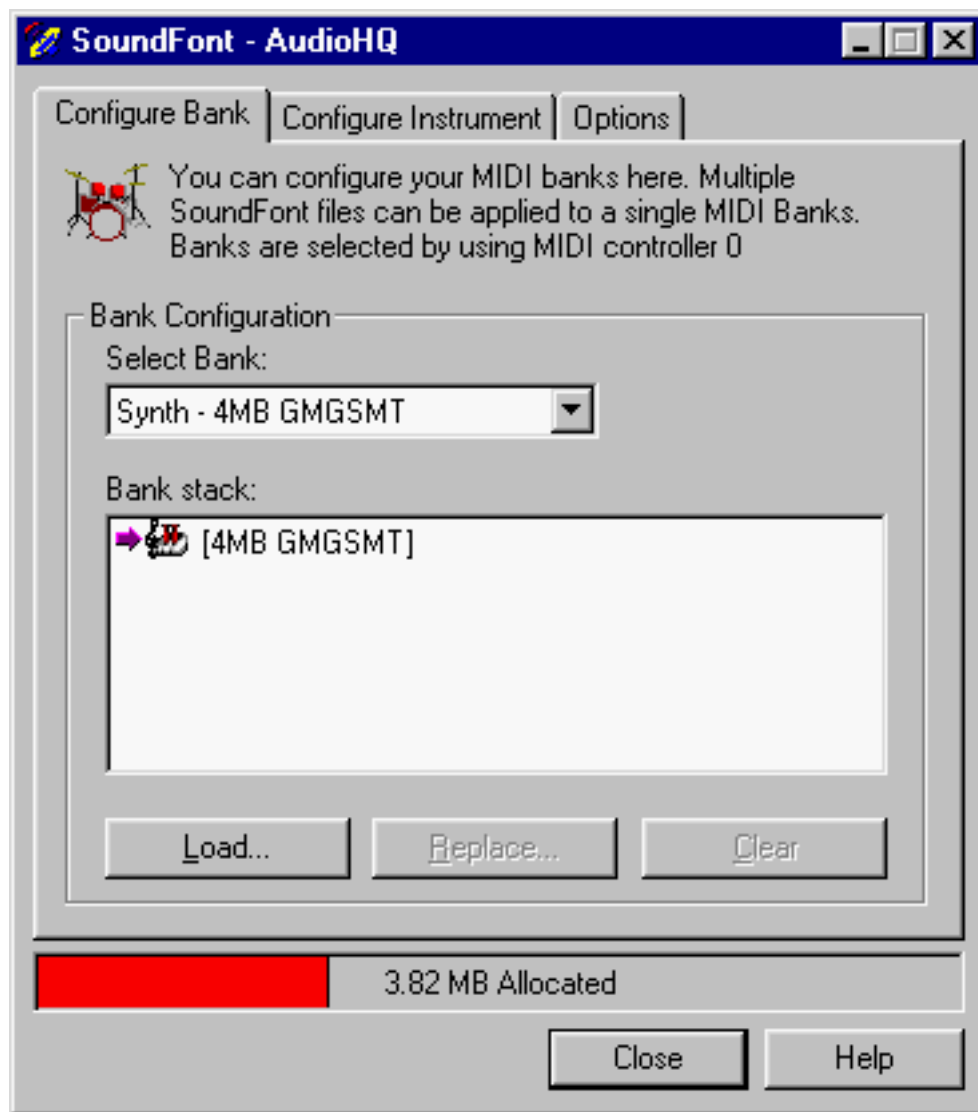


The AudioHQ interface has the standard look and feel of the Windows Control Panel. It contains several control utilities that allow you to view, audition, or set up the audio properties of one or more audio devices on your computer.

SoundFont Control

Creative SoundFont Control allows you to configure MIDI banks with SoundFont files and instruments, as well as set the caching algorithm and space.

Configure a MIDI Bank

Figure 2. SoundFont Control dialog box where you configure MIDI banks.

To configure a MIDI bank:

1. In SoundFont Control, click the Configure Bank tab.
2. In the Select Bank list, select the MIDI bank to configure.
3. Click the Load button and load the SoundFont file you want to the MIDI bank. The latest file loaded always appears at the top of the Bank Stack box. The top of the stack is indicated by an arrow.
4. To replace a SoundFont file, click the file and then click the Replace button.
OR
Double-click the file, and select the replacement.
5. To clear a bank from the stack, select the bank and then click the Clear button. A variation bank can only be cleared by clearing its main bank.
6. Repeat Steps 3, 4 or 5 as required.

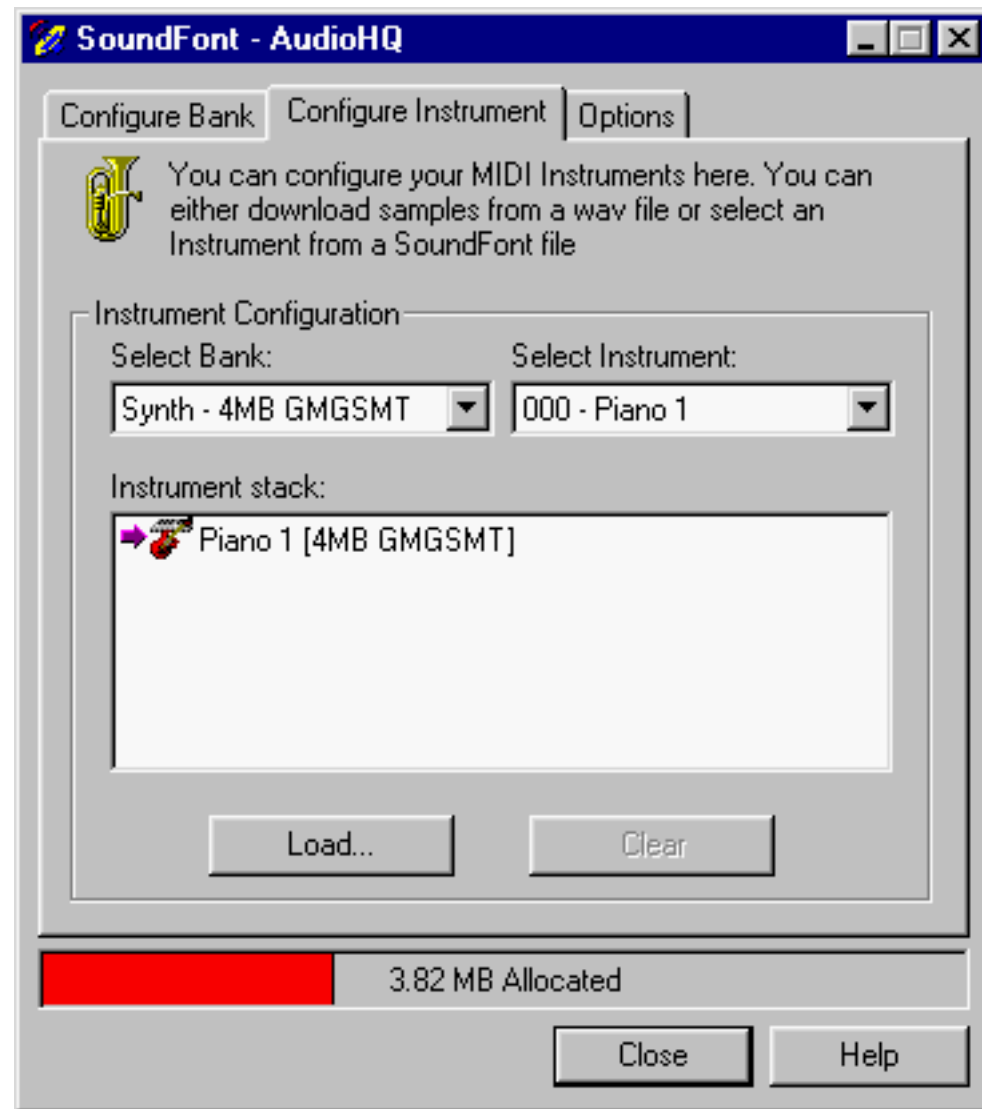
By stacking a SoundFont file instead of replacing one with the other, you may return to the original sounds or use the new selection.

You can "spot" hide particular instruments by loading one or more SoundFont files on top of the original.

When you clear a SoundFont file, you remove the latest configuration of the main bank and any variation banks, including the latest configuration of instruments on the Configure Instrument tabbed page.

Configure an Instrument

Figure 3. Soundfont Control dialog box where you configure instruments.



To configure an instrument:

1. In the SoundFont dialog box, click the Configure Instrument tab
2. In the Select Bank list, select the bank whose instruments you want to configure. You can select any bank.
3. In the Select Instrument list, select the instrument to configure.
In the Instrument Stack, you may see an instrument entry although you did not load an instrument on this page. The instrument can be found in a bank loaded on the Configure Bank tabbed page.

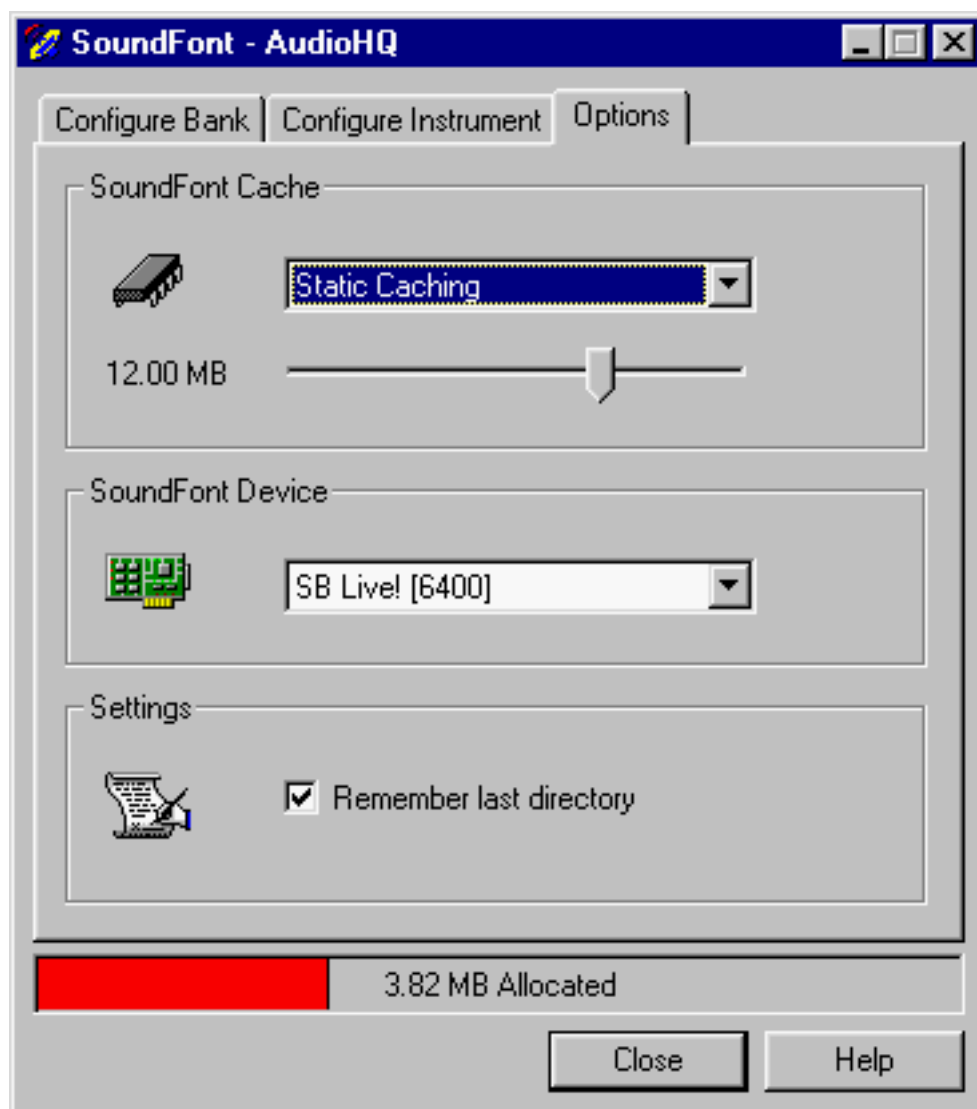
4. Click the Load button and load a SoundFont or single-instrument (for example, .WAV) file. The last file loaded always appears at the top of the Instrument Stack with an arrow pointing to it.
5. To clear an instrument from the stack, select the instrument and then click the Clear button.
6. For faster processing of SoundFont files, the files are loaded into memory. You need to set the maximum amount of cache memory your SoundFont files can occupy, so that your system performance does not suffer from insufficient memory.



NOTE: Setting the maximum amount of cache memory for SoundFont files does not mean setting aside or reserving the space. The space can still be used by your computer or other files if needed.

SoundFont Caching

Figure 4. Soundfont Control dialog box where you configure other soundfont settings.



To specify the caching algorithm:

- On the Options tabbed page of the SoundFont Control dialog box, select an algorithm from the SoundFont Cache list.

To set the amount of cache for SoundFont files:

- On the Options tabbed page of the SoundFont Control dialog box, move the SoundFont Cache slider to set the amount of cache.

SoundFont Device

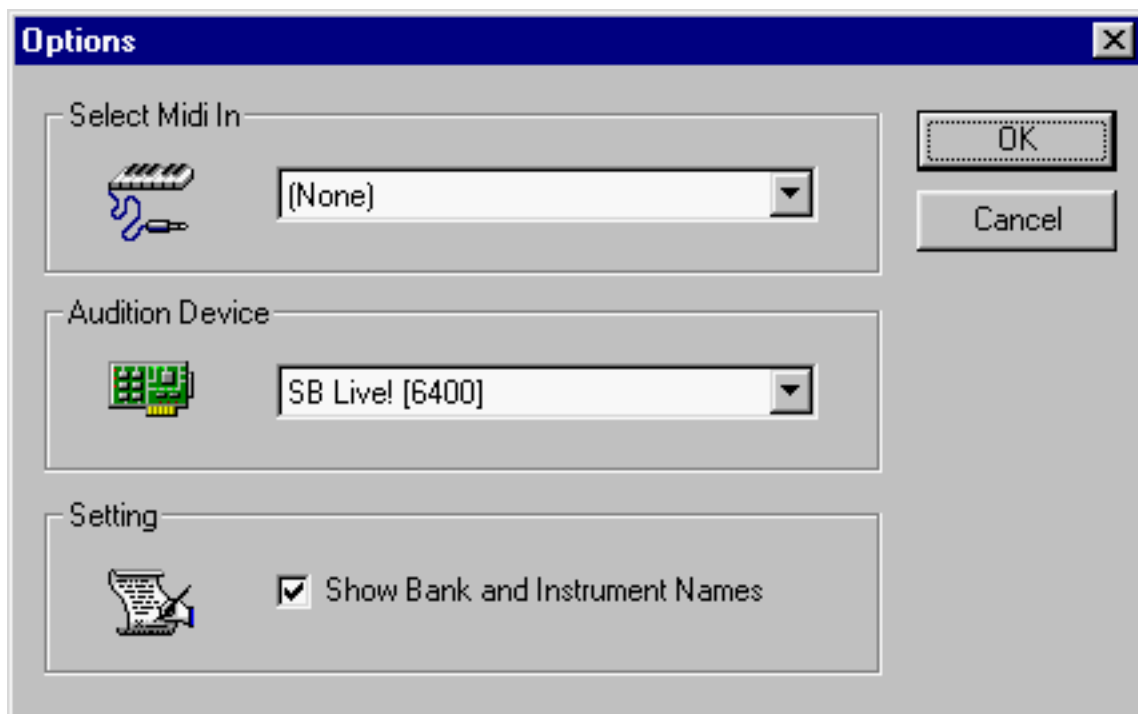
To change the SoundFont device

- On the Options tabbed page of the SoundFont dialog box, select the new device from the SoundFont Device list.

Creative Keyboard

Creative Keyboard allows you to play musical notes on various instruments much like a composer would play notes on a piano (or other instrument) while creating or arranging music. To edit the sound, use Vienna SoundFont Studio or another sound editor.

Figure 5. Creative Keyboard options dialog box where you configure its settings.



MIDI Input

To select a MIDI input device:

1. In the Select MIDI In box in the Options dialog box, click the correct MIDI port.
2. Click the OK button.

You can now use the external MIDI input device to test your sound creation.

You can use external MIDI input devices to audition your MIDI banks and instruments. First, connect a MIDI input device to your audio card and then select that device in Creative Keyboard.

Test an Instrument

To test an instrument:

1. In Creative Keyboard, click the bank and the instrument you want.
2. Click the keys on the keyboard to test the sound. If you have an external MIDI input device, you will probably find it easier to use it instead.

Tips

- To select multiple notes to play simultaneously, use your right mouse button to click the keys—which will be marked by black dots.
- To release the keys, right-click them one by one, or click the All Notes Off button for simultaneous release.
- To slide across the keyboard, drag the mouse.
- If the playback's sustain is too long, click the All Notes Off button.

To test instruments with MIDI controllers:

1. In Creative Keyboard, click the MIDI controller you want to use.
2. Specify a value in the Controller Value box or drag the slider to the value.
3. Click the keys on the keyboard to test the sound. If you have an external MIDI input device, it may be easier to use.

If you do not like the effects on your instrument, click the Reset Controllers button to set the MIDI controllers to their default values.

If the playback is sustained too long, click the All Notes Off button.

To silence all MIDI sustain sounds:

- In Creative Keyboard, click the All Notes Off button. All the black points on the keyboard are removed.

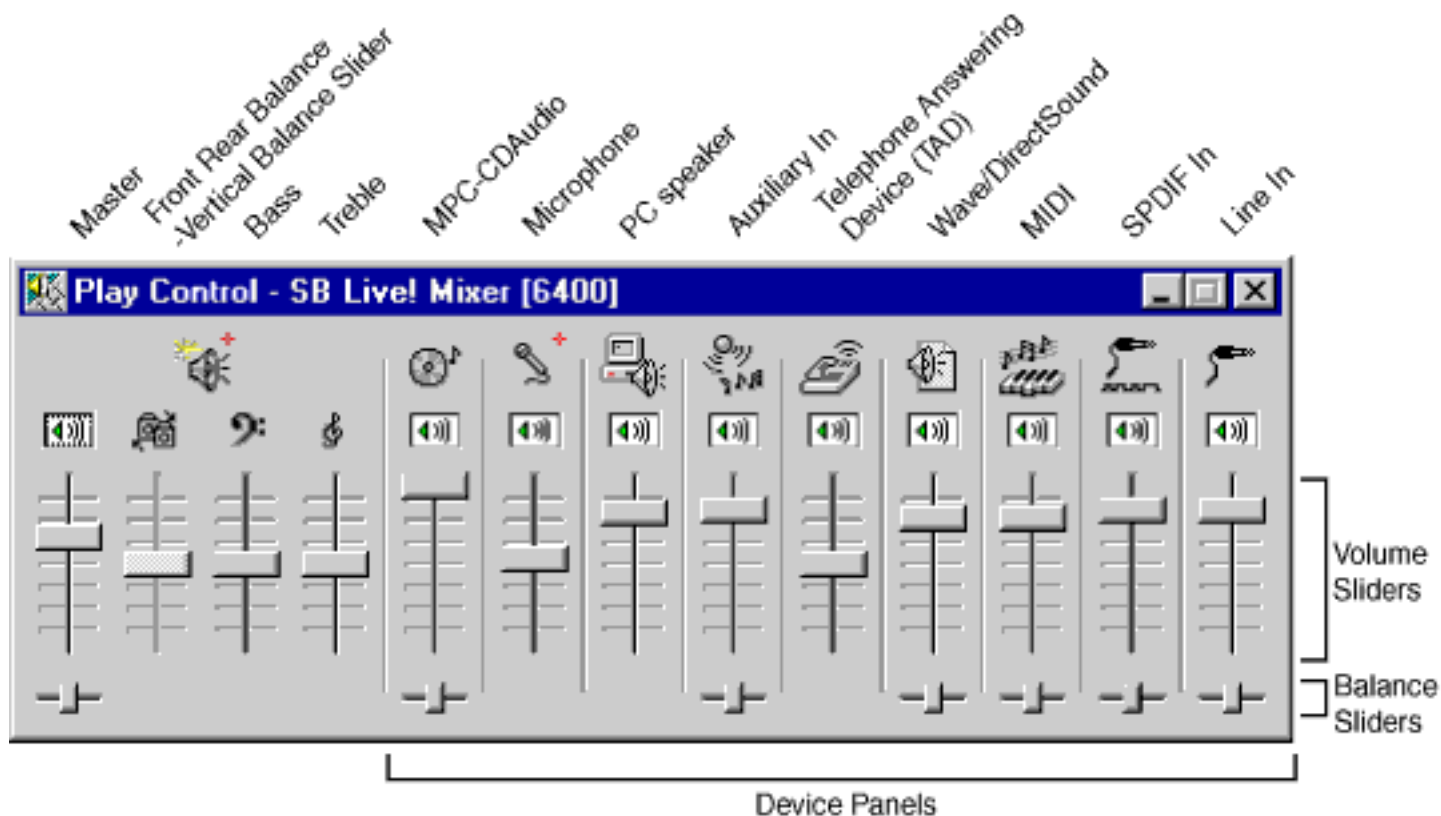
Creative Mixer

Creative Mixer allows you to control, combine, and manipulate sound from various audio sources. You can control the volume of an audio source while running other Windows applications, and you can select and mix different audio sources during playback and

recording.

You can hide or unhide device panels by dragging the borders of the Mixer left or right.

Figure 6. Creative Mixer



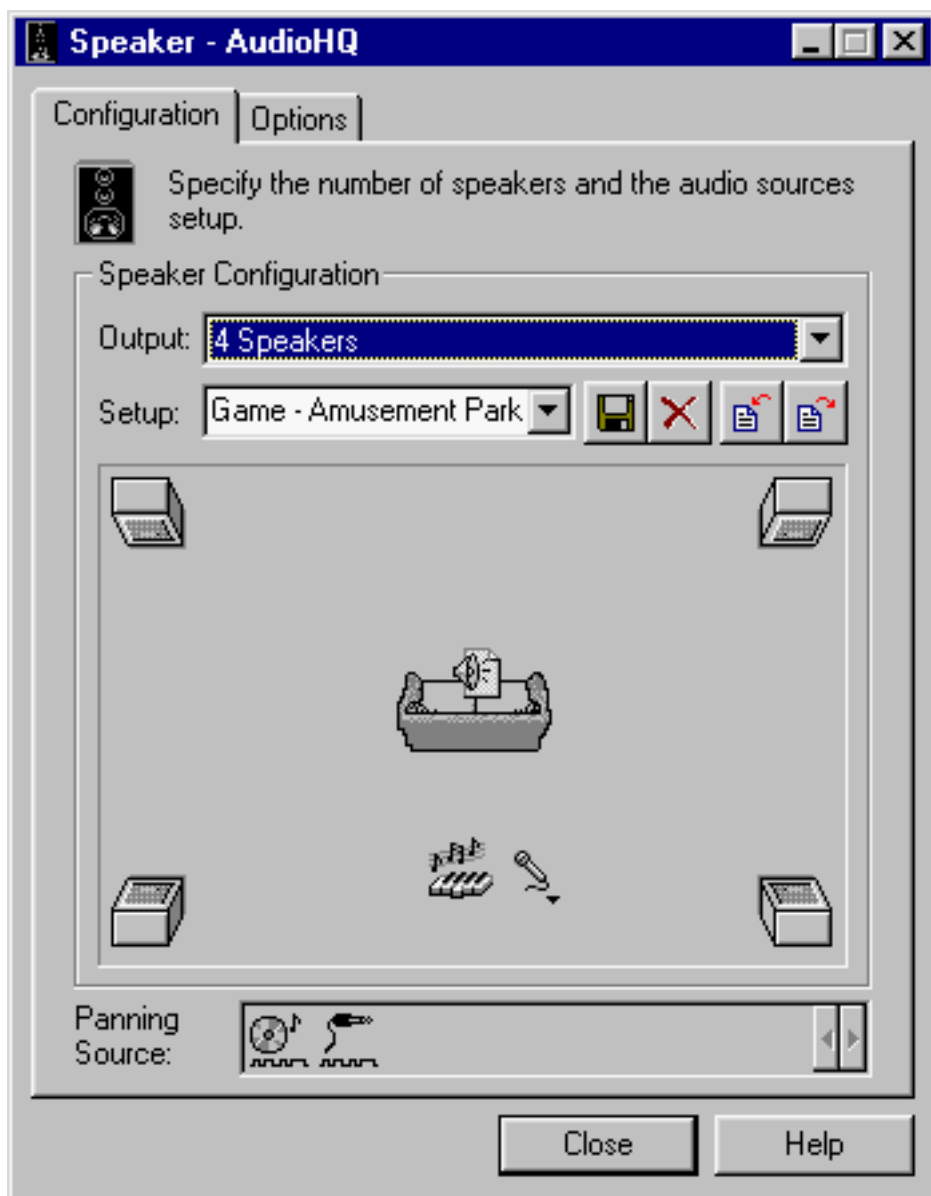
See the online help file for instructions in

- Basic tasks
- Customizing the view
- Mixing, recording and playback

Speaker Control

Speaker Control allows you to specify your speaker output configuration and the setup of audio source positions for the output. It provides you an intuitive graphical interface to arrange the audio sources about you to get the panning effects you want.

Figure 7. Speaker Control dialog box where you configure speaker output.



To configure your speakers or headphones

1. In the Speaker Configuration Output box on the Configuration tabbed page, select the output device you will be using. For best results, select the entry that corresponds to your actual output device.
 - If you select Headphones, a Headphones icon (representing you) appears at the bottom of the Preview box.
 - If you select 2 Speakers, a sofa icon (representing you) appears at the bottom of the Preview box, with the two speakers at the (front) upper corners of the box.
 - If you select 4 Speakers, a sofa icon (representing you) appears in the center of the Preview box, with the four speakers at the corners of the box.
2. For the selected output configuration, the last used setup appears in the Setup box. A setup preset stores the relative positions of audio sources under the selected speaker output configuration. You can have same-named setups across different speaker output configurations the setups can have different settings from one another. Select the setup you want.

3. If you cannot get the setup that you want from the list, create your own setup—use the current setup as the basis for change—or import a setup from a file. To import, click the Import Setup button and then select the .SPS file you want.
 - For headphones or 2-speaker configuration, you can place audio sources anywhere along the top border of the Preview box. Try dragging the audio source icon and hear the resulting panning effect.
 - For a 4-speaker configuration, you can place the sources around you as desired. As you place them further away from you, they sound softer.
4. If you used a factory setup as a basis for your own revisions, save the revised settings as a user-defined setup by typing a new name or the name of an existing user-defined setup in the Setup box, and click the Save button. If you want to share with your friends the setup you have created, export the setup (you must first save it) into a file. To do so, click the Export Setup button. You can save using the recommended name or rename as you like.



NOTE: An icon with a down-arrow on the lower-right corner denotes an analog audio source, such as CD Audio, Line In, TAD, Auxiliary, and Microphone. Right-click the icon to select the analog audio device to activate.



NOTE: If you want to change environmental effects of the sound, use the Environmental Audio Control applet to do so.

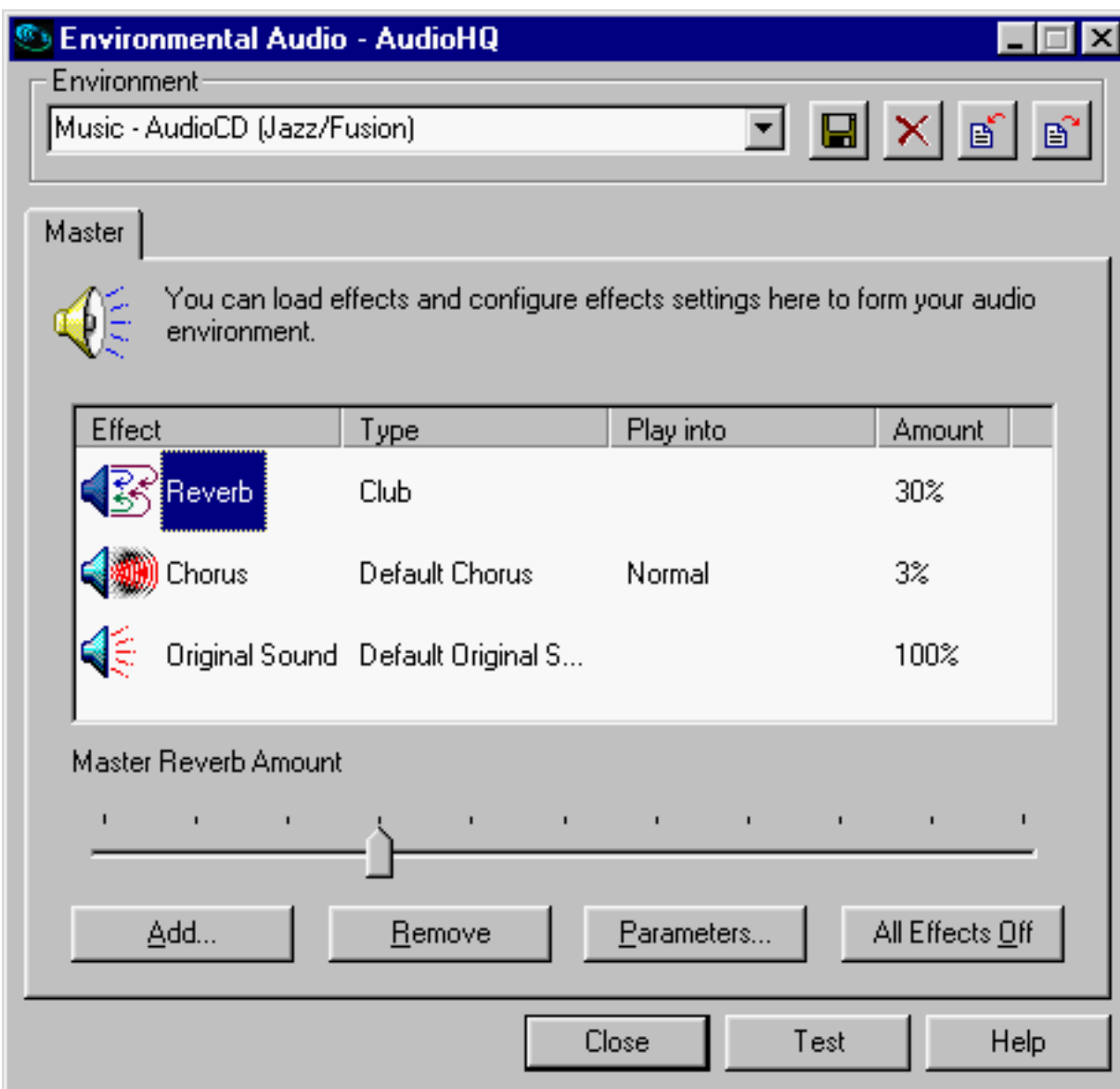


NOTE: To adjust the volume of individual audio sources, go to the Creative Mixer applet.

Environmental Audio Control

Environmental Audio Control allows you to configure the EMU10K1 effects engine. It allows you to specify to a low level the components that make up the audio elements that in turn make up an environment. An environment is the modeling of a real-world experience. We have provided some entertainment, gaming and concert hall environments to get you started with.

Figure 8. Environmental Audio dialog box where you configure your audio environment.



Learn from the online help how to:

- Configure master effects
 - Add to or remove effects from an environment
 - Specify the effect type
 - Specify the degree or amount of the effect
 - Edit an effect all the way down to its parameters or building blocks
- Configure source effects, that is, set the amount of the effects to apply on an audio source.
- Configure MIDI playback effects

[Back to Contents Page](#)

[Back to Contents Page](#)

Troubleshooting: Sound Blaster Live! Value Sound Card User's Guide

[Most Common Problems](#) • [Uninstalling and Reinstalling the Audio Drivers](#) • [Problems Installing Software](#) • [Problems With Sound](#) • [Problem with Surround Mixer](#) • [Insufficient SoundFont Cache](#) • [Problems With Joystick](#) • [Resolving I/O Conflicts](#) • [Problems in Windows NT 4.0](#)

Most Common Problems

Table 1. Most common problems encountered by users

For This Problem	Go to Section
In Windows 98 Second Edition/Windows Millennium Edition, the installation does not start automatically after the CD-ROM is inserted.	Problems Installing Software
There is unexpected excessive environmental sound or effects when an audio file is being played.	Problems With Sound
No sound from the headphones.	Problems With Sound
In a 4-speaker configuration, there is no sound from the rear speakers.	Problems With Sound
No sound from the speakers.	Problems With Sound
No audio output when playing digital files such as WAV, MIDI files or AVI clips.	Problems With Sound
No audio output when playing CD-Audio. OR No audio output when playing DOS games that require a CD-ROM.	Problems With Sound
Panning a source sometimes turns off its sound.	Problems With Sound
Unwanted change of mixer settings with every change of Super-Environment presets.	Problem with Surround Mixer
There is insufficient memory to load SoundFonts.	Insufficient SoundFont Cache
The joystick port is not working.	Problems With Joystick

The joystick is not working properly in some programs.	Problems With Joystick
Conflicts between your audio card and another peripheral device	Resolving I/O Conflicts

Uninstalling and Reinstalling the Audio Drivers

Microsoft Windows 98 Second Edition/Windows Millennium Edition/Windows 2000 Operating System

Reinstalling the Audio Drivers From the Installation Disc

You may want to reinstall the audio drivers if you think they have been corrupted. To do so:

1. Insert the installation disc into your CD-ROM drive.
2. Follow the instructions on the screen until you are prompted for a Full or Custom Installation.
3. Click the Custom Installation button.
4. In the following dialog box, clear all check boxes, and then click the OK button.
5. Follow the instructions on the screen to finish the reinstallation.

Uninstalling the Audio Drivers

1. Click the Start button, select Settings, and then click Control Panel.
2. Double-click the Add/Remove Programs icon.
3. On the Install/Uninstall tabbed page, select the Sound Blaster Live! Value entry, and then click the Add/Remove button.
4. In the Creative Uninstaller dialog box, select the Windows Drivers check box, and then click the Next button.
5. Click the Yes button.
6. Restart your computer when prompted.

Microsoft Windows NT 4.0 Operating System

Reinstalling the Audio Drivers From the Installation Disc

You may want to reinstall the audio drivers if you think they are corrupted. To do so:

1. Insert the installation disc into your CD-ROM drive.
2. Run the UPDPCINT.EXE program from the **AUDIO\Language\NT4DRV** folder of your CD-ROM drive, where *Language* is the language of the software that you want to install.
3. Restart your computer when prompted. You may be prompted to restart more than once.
4. If a Windows NT 4.0 Service Control Manager error message appears, see "[Resolving I/O Conflicts](#)" in the section "Troubleshooting".

Removing Unused Sound Blaster Drivers

You may want to remove unused Sound Blaster ISA and PCI audio drivers after you have removed the cards from your computer. To remove the drivers, use the procedure in the previous section, ["Reinstalling the Audio Drivers From the Installation Disc"](#).

Problems Installing Software

In Windows 98 Second Edition/Windows Millennium Edition, the installation does not start automatically after the CD-ROM is inserted.

The AutoPlay feature in your Windows 98 Second Edition/Windows Millennium Edition system may not be enabled.

To start the installation program through the My Computer shortcut menu:

1. Double-click the My Computer icon on your Windows desktop.
2. In the My Computer window, right-click the CD-ROM drive icon.
3. On the shortcut menu, click AutoPlay and follow the instructions on the screen.

To enable AutoPlay through Auto Insert Notification:

1. Click the Start button, select Settings, and then click Control Panel.
 2. In the Control Panel window, double-click the System icon.
 3. In the System Properties dialog box, click the Device Manager tab and select your CD-ROM drive.
 4. Click the Properties button.
 5. In the Properties dialog box, click the Settings tab and select Auto Insert Notification.
 6. Click the OK button to exit from the dialog box.
-

Problems With Sound

There is unexpected excessive environmental sound or effects when an audio file is being played.

The last selected preset is an inappropriate environment for the current audio file.

To switch to an appropriate environment:

1. Open Environmental Audio Control applet.
OR
Display Creative Launcher at the top or bottom of your screen (bring your mouse pointer to the top edge of the screen to display Launcher). Then, click the Environments tab.
2. In the Environment list, select "No effects" or an appropriate environment.

No sound from the headphones.

Check the following:

- The headphones are connected to the Line Out jack.
- In the Speaker applet (click the AudioHQ icon on the taskbar, and then click the Speaker icon), make sure the Output field is set to Headphones.
(In the Environment deck of Surround Mixer, make sure that the Speaker entry is Headphones.)

In a 4-speaker configuration, there is no sound from the rear speakers.

Check the following:

- The rear speakers are connected to the audio card's Rear Out jack.
- If you are playing sound from one of these sources.
 - CD Audio
 - Line In
 - TAD
 - Auxiliary (AUX)
 - Microphone

To solve the problem:

1. In (Surround Mixer's Mixer deck or) Creative Mixer's Play Control view, make sure the check box of the source being played is unmuted, that is, enabled.
2. In the Record Control view, make sure the corresponding check box is also selected.
(For Surround Mixer, select the same source as the record source.)

For example, if you are playing DVD games or movies, make sure in (the Mixer deck of Surround Mixer or) Creative Mixer you unmute the Auxiliary device in the (audio device panel or) Play Control view and select the Auxiliary device in the (record panel or) Record Control view. For more details, see "[Connecting Creative PC-DVD](#)" in the section "Setup".

- If you have changed environments, go to the Record Control view of Creative Mixer and make sure that the check boxes of your active sources are selected.
(For Surround Mixer, make sure that your active sources are unmuted.)

No sound from the speakers.

To solve the problem:

- Check that you have connected your speakers to your card's output.
- Check that you have unmuted the correct source in Mixer deck.
- If both these conditions have been met and you still do not get any sound, click the red plus sign above the VOL control and check whether the Digital Output Only check box is selected.
If it is, you are in the Digital Output Only mode and so must connect to digital speakers to hear the sound from your audio card.

See the section on Digital Output Only in Surround Mixer's online help for more information.

No audio output when playing digital files such as WAV, MIDI files or AVI clips.

Possible causes:

- The speaker volume knob (if any) is not set properly.
- The external amplifier or speakers are connected to the wrong jack.
- There is a hardware conflict.
- The output selection in the Configuration tabbed page of the Speaker applet is incorrectly selected.
(The Speakers selection in the Environment deck of Surround Mixer is incorrectly selected.)
- The Original Sound sliders in either the Master and Source tabbed pages of the Environmental Audio applet are set at or near 0%.

Check the following:

- The speakers' volume control knob, if any, is set at mid-range. Use (Surround Mixer or) Creative Mixer to adjust the volume, if necessary.
- The powered speakers or external amplifier are connected to the card's Line Out or Rear Out jack.
- No hardware conflict between the card and a peripheral device. See ["Resolving I/O Conflicts"](#) in the section "Troubleshooting".
- The output selection in the Speaker applet corresponds to your speaker or headphone configuration.
(The Speakers selection in the Environment deck of Surround Mixer corresponds to your speaker or headphone configuration.)
- The Original Sound sliders in either or both the Master and Source tabbed pages of the Environmental Audio applet are set to 100%.

No audio output when playing CD-Audio.

OR

No audio output when playing DOS games that require a CD-ROM.

To solve this problem:

- Make sure the CD audio cable between the CD-ROM drive and the audio card is connected.

Panning a source sometimes turns off its sound.

Sometimes when I pan an analog audio input source to the left or to the right, the sound from that source will go off.

Possible cause:

- Digital Output Only mode and conflicting left-right balances in two mixers
This occurs when you are in the Digital Output Only mode and the source's left-right balance in a software mixer application other than Surround Mixer (for example, the Windows Volume Control application) is at the opposite end compared to the position to

which you have panned the source in the Environment deck of Surround Mixer. For example, the CD Audio balance in Windows Volume Control is on the left but in Surround Mixer you have panned the CD Audio to the right.

To solve the problem:

- Open that other mixer, and center the balances for all the audio input sources. This ensures that your analog sources will not turn silent when you pan them in Surround Mixer.
-

Problem with Surround Mixer

Unwanted change of mixer settings with every change of Super-Environment presets.

To solve the problem:

- Dissociate the mixer settings.
 1. In the Preset deck, click the Surround Mixer title in the upper-left corner. The system menu appears, with a command Dissociate Mixer Settings.
 2. To dissociate mixer settings, make sure the command is checked.
-

Insufficient SoundFont Cache

There is insufficient memory to load SoundFonts.

This may occur when a SoundFont-compatible MIDI file is loaded or played.

Cause: There is insufficient memory allocated to SoundFonts.

To allocate more SoundFont cache:

- On the Options tabbed page of the SoundFont Control applet, move the SoundFont Cache slider to the right.

The amount of SoundFont cache you can allocate depends on the system RAM available.

If there is still insufficient system RAM available:

- On the Configure Banks tabbed page of the SoundFont Control applet, select a smaller SoundFont bank from the Select Bank box. The smallest SoundFont bank available is 2 MB (2GMGSMT.SF2).



NOTE: The trade-off of a smaller SoundFont bank is its lower sound quality.

Problems With Joystick

The joystick port is not working.

The audio card's joystick port conflicts with the system's joystick port.

To solve this problem:

- Disable the audio card's joystick port and use the system port instead. For details, see ["Enabling/Disabling Gameport Joystick Interface"](#) in the section "Changing Audio Card Settings".



NOTE: Do not attempt to make changes to the BIOS unless you have experience with system software.

The joystick is not working properly in some programs.

The program may use the system processor timing to calculate the joystick position. When the processor is fast, the program may determine the position of the joystick incorrectly, assuming that the position is out of range.

To solve this problem:

- Increase your system's 8 bit I/O recovery time of the BIOS setting, usually under the Chipset Feature Settings section. Or, if available, you may adjust the AT Bus speed to a slower clock. If the problem persists, try a different joystick.

Resolving I/O Conflicts

Conflicts between your audio card and another peripheral device may occur if your card and the other device are set to use the same I/O address.

To resolve I/O conflicts, change the resource settings of your audio card or the conflicting peripheral device in your system using Device Manager in Windows.

If you still do not know which card is causing the conflict, remove all cards except the audio card and other essential cards (for example, disk controller and graphics cards). Add each card back until Device Manager indicates that a conflict has occurred.

To resolve hardware conflicts in Windows:

1. Click the Start button, point to Settings, and then click Control Panel.
2. In the Control Panel window, double-click the System icon.
3. In the System Properties dialog box, click the Device Manager tab.
4. Under the Sound, Video And Game Controllers entry, select the conflicting audio card driver—indicated by an exclamation mark (!)—and click the Properties button.
5. In the Properties dialog box, click the Resources tab.

6. Make sure that the Use Automatic Settings check box is selected, and click the OK button.
7. Restart your system to allow Windows to reassign resources to your audio card and/ or the conflicting device.



NOTE: You can also refer to the Troubleshooting section in the Help file of Windows.

Problems in Windows NT 4.0

A Service Control Manager error message appears with one or more other error messages at system restart.

This occurs after you remove an audio card from your computer after you have successfully installed the Sound Blaster Live! Value card. Windows is trying to match the drivers to the removed audio card.

To solve this problem:

1. Log on to your computer as Administrator.
 2. Click the Start button, point to Settings, and then click Control Panel.
 3. Double-click the Multimedia icon, and then click the Devices tab.
 4. In the list, remove from under these entries
 5. Audio Devices
 - MIDI Devices And Instruments
 - the items other than
 - Audio for Creative SB Live!
 - MIDI for Creative SB Live!
 - MIDI for Creative S/W Synth
 5. Click the OK button to close the dialog box. The drivers are removed.
-

[Back to Contents Page](#)

[Back to Contents Page](#)

Specifications: Sound Blaster Live! Value Sound Card User's Guide

[Features](#) • [Connectivity](#)

Features

PCI Bus Mastering

- PCI Specification Version 2.1 compliant
- Bus mastering reduces latency and speeds up system performance

EMU10K1

- Advanced hardware accelerated digital effects processing
- 32-bit digital processing while maintaining a 192 dB dynamic range
- Patented 8-point interpolation that achieves the highest quality of audio reproduction
- 64-voice hardware wavetable synthesizer
- Professional-quality digital mixing and equalization
- Up to 32 MB of sound RAM mapped to host memory

Stereo Digitized Voice Channel

- True 16-bit Full Duplex operation
- 16-bit and 8-bit digitizing in stereo and mono modes
- Playback of 64 audio channels, each at an arbitrary sample rate
- ADC recording sampling rates: 8, 11.025, 16, 22.05, 24, 32, 44.1 and 48 kHz
- Dithering for 8-bit and 16-bit recording

AC '97 Codec Mixer

- Mixes EMU10K1 audio sources and analog sources such as CD Audio, Line In, Microphone, Auxiliary, TAD and PC Speaker
- Selectable input source or mixing of various audio sources for recording
- 16-bit Analog-to-Digital conversion of analog inputs at 48 kHz sample rate

Volume Control

- Software record and playback control of Master, Digitized Voice, and inputs from MIDI device, CD Audio, Line, Microphone, Auxiliary, TAD, PC Speaker, SPDIF, Wave/DirectSound device, and CD Digital (CD SPDIF)
- Separate bass and treble control
- Front and Rear Balance control

- Muting and balance control for individual playback sources

E-mu Environmental Modeling™

- Realistic 3D experience that increases depth and breadth in perceived audio
- Highly accurate positioning of audio objects in 3D space
- Exceptional reproduction of various ambient and environmental effects

DynaRAM™

- Dynamically allocating host memory for storing and processing sound samples
- Need not rely on onboard audio card memory

Creative Multi Speaker Surround™ (CMSS™)

- Multi-speaker technology
 - Professional-quality panning and mixing algorithm
 - Independent multiple sounds can be moved and placed around a listener
-

Connectivity

Audio Inputs

- One line-level analog Line input via stereo jack on rear bracket
- One mono Microphone analog input via stereo jack on rear bracket
- CD_IN line-level analog input via 4-pin Molex connector on card
- AUX_IN line-level analog input via 4-pin Molex connector on card
- TAD line-level analog input via 4-pin Molex connector on card
- CD_SPDIF digital input via 2-pin Molex connector on card, accepting sampling rates of 32, 44.1 and 48 kHz.

Audio Outputs

- Two line-level analog outputs via stereo jacks on rear bracket, Front and Rear Line-Outs
- Stereo headphone (32-ohm load) support on Front Line-Out

Interfaces

- MB_PRO 2x5 pin header
 - PC_SPK 1x2 pin header
 - AUD_EXT 2x20 pin header
 - DIGITAL OUT jack
-

[Back to Contents Page](#)

[Back to Contents Page](#)

Internal Connectors: Sound Blaster Live! Value Sound Card User's Guide



NOTE: A Jack is a one-hole connecting interface whereas a connector consists of many pins. Refer to the online User's Guide, "Hardware Information", for details on connector pin assignments. To access the online User's Guide, click the Start button, point to Programs, point to Creative, point to Sound Blaster Live! Value and select User's Guide.



NOTE: Line Out and Rear Out jacks can be used simultaneously to power 4 channel speaker systems.

Figure 1. Jacks and connectors on the Sound Blaster Live! Value card

AUX connector

Connects to internal audio sources such as TV Tuner, MPEG, or other similar cards.

CD Audio connector

Connects to the Analog Audio output on a CD-ROM or DVD-ROM drive using a CD audio cable.

Telephone Answering Device connector

Provides a mono connection from a standard voice modem, and transmits microphone signals to the modem.

Digital Out jack

Connects an external digital device, such as a Digital Audio Tape (DAT) machine, that uses SPDIF for recording or playback.

Line In jack

Connects to external devices, such as cassette, DAT, or MiniDisc player for playback or recording.

Microphone In jack

Connects to an external microphone for voice input.

Line Out jack

Connects to powered speakers or an external amplifier for audio output. Also supports headphones.

Rear Out jack

Connects to powered speakers or an external amplifier for audio output.

Joystick/MIDI connector

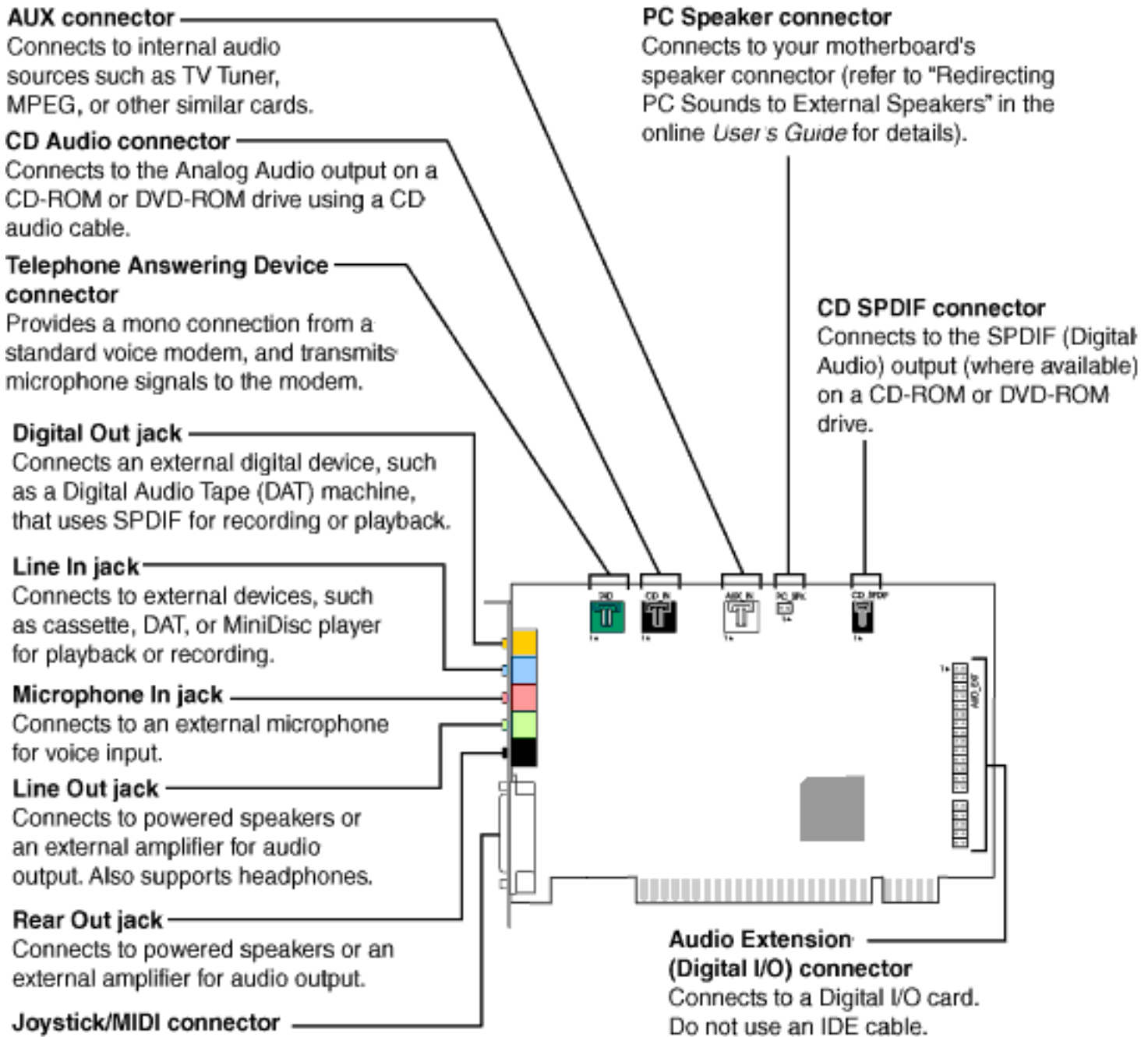
Connects to a joystick or a MIDI device. You can buy an optional MIDI kit that allows you to plug in the joystick and MIDI device simultaneously.

PC Speaker connector

Connects to your motherboard's speaker connector (refer to "Redirecting PC Sounds to External Speakers" in the online *User's Guide* for details).

CD SPDIF connector

Connects to the SPDIF (Digital Audio) output (where available) on a CD-ROM or DVD-ROM drive.



[Back to Contents Page](#)

[Back to Contents Page](#)

Connecting Creative PC-DVD: Sound Blaster Live! Value Sound Card User's Guide

When you are playing your DVD movies or games:

If your Encore Dxr2 or MPEG2 decoder card is connected to an external Dolby Digital (AC-3) decoder such as Desktop Theater 5.1, either:

- Disconnect the Sound Blaster Live! card's Aux In connector from the decoder card's Audio Out connector (Highly recommended),
OR
- Mute the Aux Input in (Surround Mixer) or the Creative Mixer's Play Control view.

If your decoder card is *not* connected to an external Dolby Digital (AC-3) decoder, it is recommended that you:

1. Connect the Sound Blaster Live! card's Aux In connector to the decoder card's Audio Out connector.
2. Select (that is, unmute) the Aux Input in (Surround Mixer or) the Creative Mixer's Play Control view.
You may need to select this configuration when playing certain DVD games with Dolby Digital video clips.

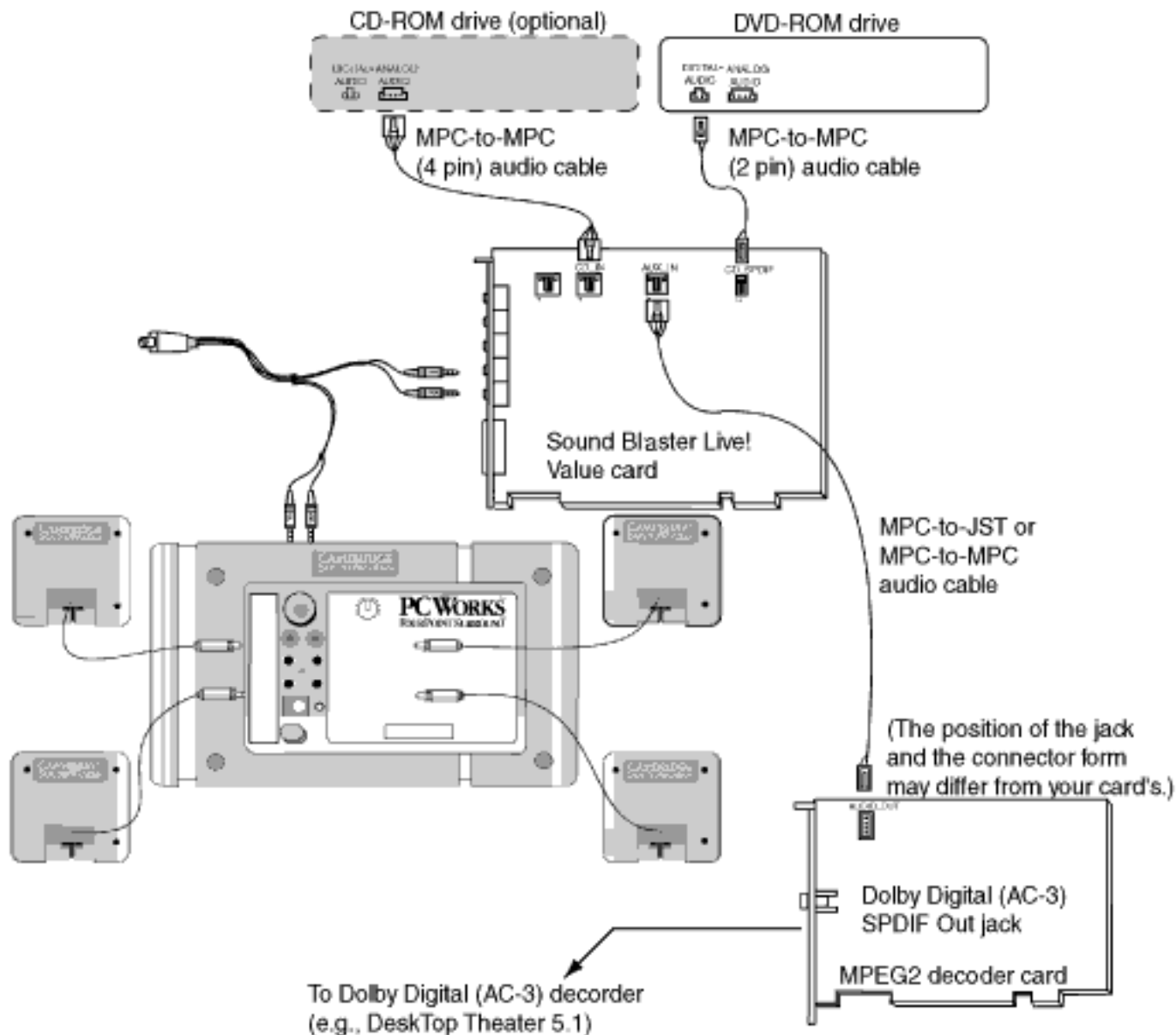
If you:

- Get distorted or no audio at all (Reason: Your CD-ROM or DVD-ROM drive does not fully comply to SPDIF specifications),
OR
- Are playing games in Windows 98 Second Edition MS-DOS mode (that is, pure DOS mode),
do the following:
 1. Connect the CD In connector to the Analog Audio jack of the CD-ROM or DVD-ROM drive.
 2. In (Surround Mixer or) the Play Control view of Creative Mixer, unmute the CD Audio device and mute the CD Digital device.

If you connect to the Digital Audio and Analog Audio jacks of the *same* CD-ROM or DVD-ROM drive, make sure that in (Surround Mixer or) the Play Control view of Creative Mixer, unmute only one or the other of CD Audio or CD Digital but not both.

To open (Surround Mixer) or the mixer, bring your pointer to the top of the screen to display [Creative Launcher](#), click the (Sound Blaster Live! Value or) AudioHQ tab, and then click the (Surround Mixer or) Mixer icon.

Figure 1. Connecting Creative PC-DVD.



[Back to Contents Page](#)

[Back to Contents Page](#)

Determining Resources: Sound Blaster Live! Value Sound Card User's Guide

To find the current SB Live! SB16 Emulation resources in Windows 98 Second Edition:

1. Click the Start button, point to Settings, and then click Control Panel.
2. In the Control Panel window, double-click the System icon.
3. In the System Properties dialog box, click the Device Manager tab.
4. Double-click Creative Miscellaneous Devices, and then double-click Creative SB Live! SB16 Emulation.
5. Click the Resources tab.

You can use the information in the resource list to help you configure MS-DOS games for use with the SB Live! Value card.

The resource list may show three entries of "Input/Output Range" and two entries of "Direct Memory Access". They correspond to the sequence of entries in [Table 1](#) and [Table 3](#) in the section "Understanding the System Resource Settings". If the number of entries do not match, a good estimate of the identity of the device is its I/O address or DMA channel.

To find the current SB Live! SB16 Emulation resources in MS-DOS mode:

1. Switch to your SB Live! DOS driver directory, that is:
`C:\PROGRA~1\CREATIVE\SBLIVE\DOSDRV`
2. Type SBECFG and then press Enter



NOTE: The MS-DOS driver SBEINIT.COM must be running for SBECFG.EXE to work properly.

Some older games may have difficulty detecting the SB Live! card at certain resource settings. Typically, these games would expect the card to be at a fixed set of resources and would fail to load if those resources are not detected. If you have older MS-DOS games that do not work properly, try changing the SB Live! SB16 Emulation configuration. Use the following as a guide:

Problem: Sound Blaster emulation is not recognized.

Resource: Try switching the SB Emulation IRQ between 5 and 7, use DMA channel 1, use SB interface port 220.

Problem: The MPU-401 emulation is not recognized.

Resource: Try using Port address 330.

[Back to Contents Page](#)

[Back to Contents Page](#)

Understanding the System Resource Settings: Sound Blaster Live! Value Sound Card User's Guide

[Overview](#) • [Input/Output \(I/O\) Addresses](#) • [Interrupt Request \(IRQ\) Line](#) • [Direct Memory Access \(DMA\) Channel](#)

Overview

This section explains the following software SB emulation resources—not hardware resources— of your card.



NOTE: If your card encounters a conflict with a peripheral device, you may need to change its resource settings. For details, see ["Resolving I/O Conflicts"](#) in the section "Troubleshooting".

*When any resource setting is changed, make sure that the environment variables (see ["Understanding the Environment Variables"](#) in the section "Using the Sound Card") reflect the changes as well. You can view your system environment by typing **SET** at the DOS prompt.*

Input/Output (I/O) Addresses



NOTE: In the following tables the preferred values are in bold.

I/O addresses are communication areas used by your computer's central processor to distinguish among various peripheral devices connected to your system when sending or receiving data.

Table 1. Possible default input/output (I/O) addresses.

Device	Default I/O Address Range
SB interface	220H to 22FH 240H to 24FH 260H to 26FH 280H to 28FH
MPU-401 UART MIDI interface	300H to 301H 310H to 311H 320H to 321H 330H to 331H
Stereo music synthesizer	388H to 38BH

Interrupt Request (IRQ) Line

An IRQ line is a signal line that a device uses to notify your computer's central processor that it wants to send or receive data for processing.

Table 2. Possible default interrupt request (IRQ) line assignment.

Device	Default IRQ Line
SB interface	5, 7, 9, 10

Direct Memory Access (DMA) Channel

A DMA channel is a data channel that a device uses to transfer data directly to and from the system memory.

Table 3. Possible default direct memory access (DMA) channel assignment.

Usage	Default DMA Channel
First DMA channel	0, 1, 3
Second DMA channel	5, 6, 7

[Back to Contents Page](#)

[Back to Contents Page](#)

Changing Audio Card Settings: Sound Blaster Live! Value Sound Card User's Guide

[Overview](#) • [Enabling/Disabling Gameport Joystick Interface](#) • [Enabling/Disabling Other Features](#)

Overview

You might want to disable interfaces that you are not using to free up resources, for example, when you do not have enough IRQ lines.

Enabling/Disabling Gameport Joystick Interface

The Gameport Joystick interface on your audio card can be enabled or disabled in Windows.

To enable or disable the interface in Windows:

1. Click the Start button, point to Settings, and then click Control Panel.
2. In the Control Panel window, double-click the System icon.
3. In the System Properties dialog box, click the Device Manager tab.
4. Double-click Sound, Video And Game Controllers, and then select Creative Gameport Joystick.
5. Click the Properties button.
6. In the Properties dialog box:
 - If you have an Original Configuration (Current) check box:
 - To enable the interface, make sure that the check box is selected.
 - To disable it, clear the check box.
 - If you have a Disable In This Hardware Profile check box:
 - To enable the interface, clear the check box. To disable it, make sure that the check box is selected.
7. Click OK to restart Windows and for the change to take effect.

When the Gameport Joystick interface is disabled, the entry in Device Manager has a red cross.

Enabling/Disabling Other Features

Use the applets under Creative AudioHQ to enable or disable features such as Stereo Enhancement Effect.

To open an AudioHQ applet from the Sound Blaster menu

Click the Start button on the taskbar, point to Programs, point to Creative, point to Sound Blaster Live! Value, and then click AudioHQ.

Check out the applets within the AudioHQ window.

To open an AudioHQ applet from Creative Launcher

Click Creative Launcher at the top or bottom of your computer screen, and then click the AudioHQ tab.

Check out the applets indicated by the icons in the second row of Launcher.

[Back to Contents Page](#)

[Back to Contents Page](#)

Using Sound Blaster Live! Value: Sound Blaster Live! Value Sound Card User's Guide

Every bundled application provides online help to guide you along when you use it.

For further information, value-added tips, tricks and plug-ins, check the SB Live! owners' Web site frequently at <http://www.sblive.com>.

A fast way of getting to the Web site is to click the right-most button (the Environmental Audio icon) on Creative Launcher.

Figure 1. Creative Launcher.



Creative Launcher is a one-stop shortcut to quickly start your applications and get to the Creative and the SB Live! owners' Web site. To display Launcher, bring your pointer to the top of the screen.

For details on how to use the Launcher, see its online help.

[Back to Contents Page](#)

[Back to Contents Page](#)

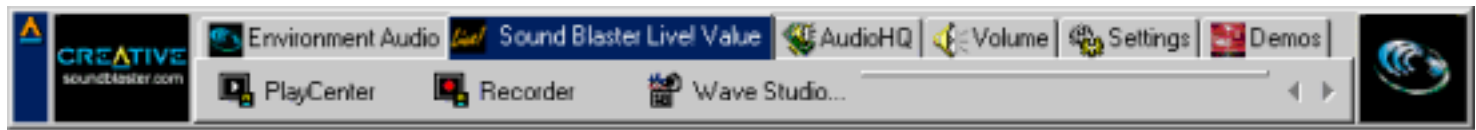
Creative Launcher: Sound Blaster Live! Value Sound Card User's Guide

[Overview](#) • [Options](#) • [Groups](#)

Overview

Creative Launcher allows you to organize your desktop and open Creative applications quickly.

Figure 1. Creative Launcher.



Creative Launcher is installed at the top of your screen. If it does not appear, move your mouse pointer to the top of the screen and Launcher should appear. Creative Launcher consists of the system menu icon (the Creative logo at the top left corner), the Web site icon, group tabs, and the group items. The Environmental Audio icon is on the right.

Options

To set the options for the Launcher:

1. Click the System Menu icon on Launcher, and then click Properties. The Properties dialog box appears.
2. Select or clear the desired options.
3. Click the OK button to apply the changes to the Launcher.

Groups

You can place three types of items in Launcher:

- Subgroups
- Shortcuts
- Plug-ins

A *subgroup* is an item within a group that may contain more items.

A *plug-in* is a Creative software module that is integrated into Launcher. Examples are the Volume Control Plugin and the Command Line Plugin.

The installation creates a number of group tabs in Launcher that may contain shortcuts to Creative applications such as PlayCenter and Control Panel. It may also contain shortcuts to other applications for your hardware settings, volume control, help files, or demonstration programs by Creative.

For details on managing groups and items in Launcher, see its online help.

[Back to Contents Page](#)

[Back to Contents Page](#)

Installing the Card and Related Peripherals: Sound Blaster Live! Value Sound Card User's Guide

[Installing the Sound Card](#) • [Installing Related Peripherals](#)

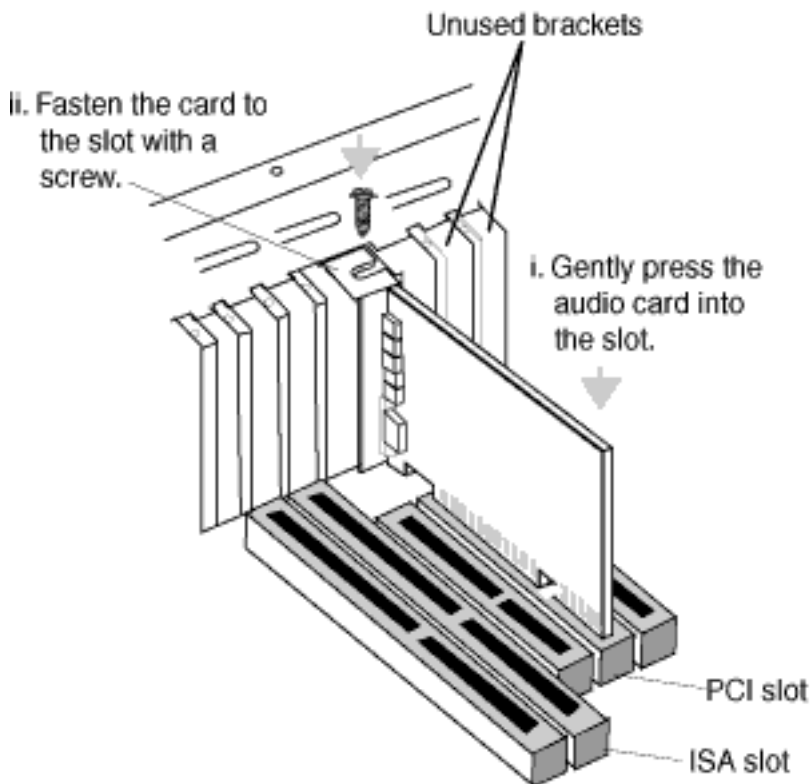
Installing the Sound Card



WARNING: Do not force the audio card into the slot. If it does not fit properly, gently remove it and try again.

1. Switch off your system and all peripheral devices.
2. Touch a metal plate on your system to ground yourself and to discharge any static electricity, and then unplug the power cord from the wall outlet.
3. Remove the cover from your system.
4. Remove the metal plate from an unused PCI expansion slot in your system and put the screw aside, to be used later.
5. Align the audio card with the vacant PCI expansion slot. Press the card gently and evenly into the slot as shown. Ensure that the card sits firmly inside the PCI expansion slot.
6. Secure the card to the expansion slot with a screw.
7. Replace the cover onto your system.
8. Plug the power cord back into the wall outlet, and switch on the system.

Figure 1. Securing the audio card to the PCI expansion slot.



NOTE: The joystick connector on your audio card is identical to that on a standard PC game control adapter or the game I/O connector. You can connect any analog joystick with a 15-pin D-shell connector or any device compatible with the standard PC joystick. To use two joysticks, you need a Y-cable splitter.

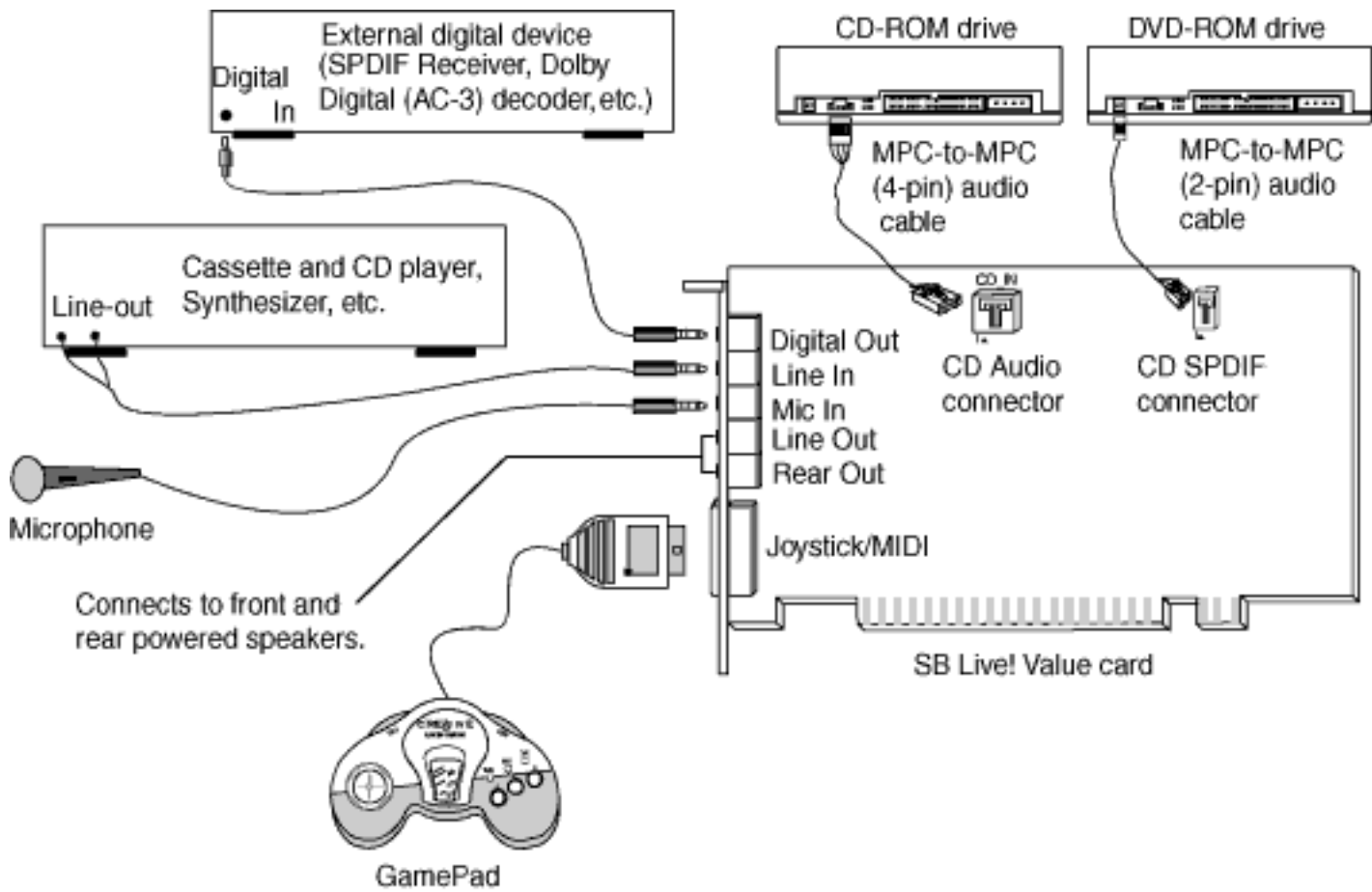
Installing Related Peripherals

If you are playing games in Windows 98 Second Edition MS-DOS mode (that is, pure DOS mode), you must make sure the CD In connector and the Analog Audio connector of the CD-ROM or DVD-ROM drive are connected

In addition, if you get distorted audio, do not connect the CD SPDIF connector to the Digital Audio connector of the CD-ROM or DVD-ROM drive.

If you connect to the Digital Audio and Analog Audio connectors of the *same* CD-ROM or DVD-ROM drive, make sure that in Surround Mixer or the Play Control view of SB Live! Mixer unmute only one or the other of CD Audio or CD Digital but not both.

Figure 2. Connecting other devices.



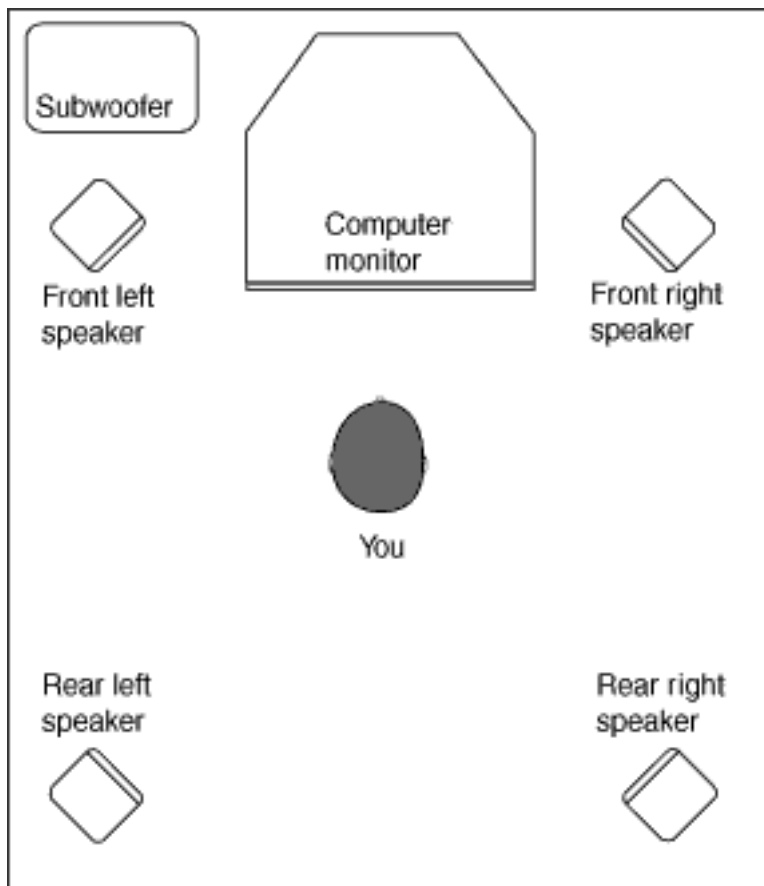
[Back to Contents Page](#)

[Back to Contents Page](#)

Positioning Your Speakers: Sound Blaster Live! Value Sound Card User's Guide

If you are using four speakers, place them such that they form the corners of a square with you exactly in the center (as in Figure 1) and that they are angled toward you. Make sure the computer monitor is not blocking the path of your front speakers. You may want to adjust the relative positions of the speakers until you get the audio experience you like best. If you have a subwoofer, place the unit in a corner of the room for the best bass experience.

Figure 1. Recommended speaker positions for the 4-speaker configuration.



[Back to Contents Page](#)

[Back to Contents Page](#)

Running MS-DOS games in Microsoft Windows: Sound Blaster Live! Value Sound Card User's Guide

[Overview](#) • [From the MS-DOS box in Windows](#) • [In the Windows 98 Second Edition MS-DOS mode](#)

Overview

Legacy games in the market have been designed for only MS-DOS. SB Live! Value supports MS-DOS games. There are two ways to play MS-DOS games.

From the MS-DOS box in Windows

This is the recommended method.

To open the box:

- Click the Start button on the taskbar of Windows, point to Programs, and then click MS-DOS Prompt.
-

In the Windows 98 Second Edition MS-DOS mode

There could be times when you do not want to or cannot run a game from the MS-DOS box. The game may be incompatible with Windows 98 Second Edition, or there is insufficient system resources to play the game with Windows 98 Second Edition loaded. In such cases, use the MS-DOS mode, in which only the real-mode portions of Windows 98 Second Edition are loaded.

To restart the system in MS-DOS mode when you are already in Windows 98 Second Edition:

- Click the Start button on the taskbar, and then click Shutdown.
- Click the Restart The Computer In MS-DOS Mode option button, and then click the OK button.

To start the system in MS-DOS mode at system startup:

- At startup as Windows 98 Second Edition is loading, hold the F8 key.
 - At the startup menu, choose the Command Prompt Only option, and then press <Enter>.
-

[Back to Contents Page](#)

[Back to Contents Page](#)

Selecting the Best Audio Options in a Game: Sound Blaster Live! Value Sound Card User's Guide

[Overview](#) • [Music Options](#) • [Digital Audio Options](#)

Overview

Most MS-DOS–based games that provide sound have some procedure for audio setup. These procedures generally present you with a list of popular audio cards or audio devices from which to choose.

The methods used by games to present audio options can vary greatly. Some may present a single choice that corresponds to a particular audio device, that is, Sound Blaster, Sound Blaster 16, Roland Sound Canvas, and so on. Others will provide an option for music and digital audio separately; for example, General MIDI music with Sound Blaster digital audio. In such a case, there are often two separate menus to configure.

Some games allow you to set the MIDI port address and IRQ for music and sound. Make sure that these settings correspond to the values displayed by [SBECFG.EXE](#) or the Resources tabbed page of the Creative SB Live! SB16 Emulation Properties dialog box.

There are games that offer MPU-401/Roland (General MIDI or MT-32/LAPC-1) as an option. Often these games allow you to set the MIDI port address. Make sure that they match the MIDI address in the Resources list on Resources tabbed page of the Creative SB Live! SB16 Emulation Properties dialog box. The same values can be found under "MPU-401 (General MIDI, Roland MT-32/LAPC-1) Emulation", displayed by SBECFG.EXE in MS-DOS mode. Remember to enable the MT-32 MIDI patch with the [SBEMIXER](#) program if you select Roland MT-32 or LAPC- 1 for music.

Music Options

Most MS-DOS games offer a menu choice for sound when they start up. If you have a choice between General MIDI and MT-32, always choose General MIDI, since it will provide you with the best sound quality. If you need to use MT-32, you must first switch from the General MIDI instrument set (the default) to the MT-32 instrument set using SBEMIXER. Be sure to switch back to the General MIDI set when you are finished using the MT-32 instrument set.

Digital Audio Options

SB Live! supports Sound Blaster, Sound Blaster Pro, Sound Blaster 16, and Adlib digital audio emulation. If an application provides all these as options, specify the choices in this order:

1. Sound Blaster 16
 2. Sound Blaster Pro
 3. Sound Blaster
 4. Adlib
-

[Back to Contents Page](#)

[Back to Contents Page](#)

Understanding the Installation Program in Windows 98 Second Edition: Sound Blaster Live! Value Sound Card User's Guide

[Overview](#) • [The AUTOEXEC.BAT File Settings](#) • [The CONFIG.SYS File Settings](#)

Overview

The installation program modifies your AUTOEXEC.BAT and CONFIG.SYS files.

The AUTOEXEC.BAT File Settings

The installation program adds the following statements to the AUTOEXEC.BAT file:

```
SET CTSYN=C:\WINDOWS
SET BLASTER=A220 I5 D1 H5 P330 T6
C:\PROGRA~1\CREATIVE\SBLIVE\DOSDRV\SBEINIT.COM
```

The first two statements set up the environment variables for your audio card. For an explanation of the variables, see ["Understanding the Environment Variables"](#) in the section "Using the Sound Card".

The third statement runs the SBEINIT.COM driver. SBEINIT.COM is the SB Live! MS-DOS driver. It is required for the SB Live! Value card to function properly under MS-DOS mode. The syntax for the statement is as follows:

```
<SB Live! path>\SBEINIT.COM
```

SBEINIT.COM requires that the HIMEM.SYS and EMM386.EXE files are loaded. If needed, the installation program adds the necessary HIMEM.SYS and EMM386.EXE lines to your CONFIG.SYS file, creating the file if it is not present.

On the rare occasion a program does not work with expanded memory, simply add the NOEMS parameter to your memory manager. For example:

```
DEVICE=C:\WINDOWS\EMM386.EXE NOEMS
```

if C:\WINDOWS is your Windows directory.

You may load this driver into high memory in the AUTOEXEC.BAT file, even though the default is not. For example:

```
LOADHIGH=C:\PROGRA~1\CREATIVE\SBLIVE\DOSDRV\SBEINIT.COM
```

Do not remove the memory manager altogether. Do not attempt to load SBEINIT.COM into high memory when using the NOEMS option if SBEINIT.COM fails to run SBELOAD.EXE or SBECFG.EXE.

In the rare case that an MS-DOS game will not work with a memory manager, you will not be able to use the SB Live! Value card with the game.

The CONFIG.SYS File Settings

The installation program adds the following statements to the CONFIG.SYS file:

```
DEVICE=C:\WINDOWS\HIMEM.SYS  
DEVICE=C:\WINDOWS\EMM386.EXE
```

[Back to Contents Page](#)

[Back to Contents Page](#)

Creative Diagnostics: Sound Blaster Live! Value Sound Card User's Guide

Creative Diagnostics is an application that allows you to test the audio functions of your sound card easily. With Creative Diagnostics, you can check your system's ability to:

- playback digital audio.
- record digital audio.
- playback MIDI on your sound card's internal MIDI synthesizer.
- playback audio CDs.

See the instructions in Creative Diagnostics for details.

[Back to Contents Page](#)

[Back to Contents Page](#)

SB Live! Experience: Sound Blaster Live! Value Sound Card User's Guide

Congratulations! You have successfully installed Sound Blaster Live! Value. To enhance your experience, it is highly recommended that you run the SB Live! Experience.

SB Live! Experience

Demonstrates the many wonderful experiences Sound Blaster Live! can give you.

- To run SB Live! Experience, bring your pointer to the top of the screen to display [Creative Launcher](#), click the Sound Blaster Live! Value tab, and then click the SB Live! Experience icon. On the opening screen, click to select the topic that interests you.
-

[Back to Contents Page](#)

[Back to Contents Page](#)

Creative WaveStudio: Sound Blaster Live! Value Sound Card User's Guide

WaveStudio is a Windows-based application that allows you to perform the following sound editing functions easily:

- Play, edit, and record 8-bit (tape quality) and 16-bit (CD quality) Wave data. Enhance your Wave data or create unique sounds with various special effects and editing operations such as rap, reverse, echo, mute, pan, cut, copy, and paste.
- Open and edit several Wave files at the same time.
- Import and export raw (.RAW) data files.

See the online help file for details.

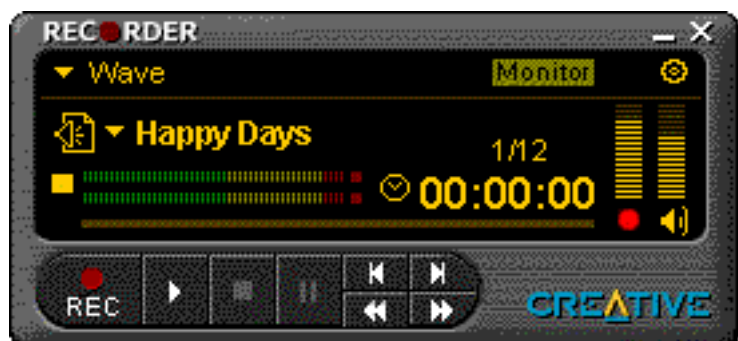
[Back to Contents Page](#)

[Back to Contents Page](#)

Creative Recorder: Sound Blaster Live! Value Sound Card User's Guide

Recorder is a Windows-based application that allows you to record sounds and music from various input sources (for example, microphone and audio CD) and save them as Wave (.wav) files.

Figure 1. Creative Recorder



Useful features include:

- AVRL (Automatic Recording Volume Level) - allows you to limit the recording volume level, so that distortion will not occur if the recording volume is too loud.
- Peak Indicator - warns you if the recording volume level is too high.

To run Recorder, bring your pointer to the top of the screen to display [Creative Launcher](#), click the Programs tab, and then click the Recorder icon.

For details on how to use Recorder, see its online help.

[Back to Contents Page](#)

[Back to Contents Page](#)

Creative PlayCenter: Sound Blaster Live! Value Sound Card User's Guide

PlayCenter allows you to play most types of media— multimedia files (MIDI, Wave, etc.), audio CDs, and Video CDs—using a single player. Just insert or select your media and PlayCenter does the rest.

Figure 1. Creative PlayCenter which lets you play most types of media files.



To run PlayCenter, bring your pointer to the top of the screen to display [Creative Launcher](#), click the Programs tab, and then click the PlayCenter icon.

For details on how to use PlayCenter, see its online help.

[Back to Contents Page](#)

[Back to Contents Page](#)

Installing Software in Windows 98 Second Edition/Windows Millennium Edition: Sound Blaster Live! Value Sound Card User's Guide

After you have installed the card and switched on your system:

- When the Add New Hardware Wizard dialog box appears, click the Cancel button. Repeat this step when the Add New Hardware Wizard dialog box appears again.

When you install the applications, the specific audio drivers for your card will be installed.

To install the applications:

1. Insert the installation disc into your CD-ROM drive. The AutoPlay screen appears.
 2. Follow the instructions on the screen to complete the installation.
-

[Back to Contents Page](#)

[Back to Contents Page](#)

Installing Software in Windows NT 4.0: Sound Blaster Live! Value Sound Card User's Guide

[Installing the Software](#) • [Setting Up Joystick Drivers in Windows NT 4.0](#)



NOTE: You cannot install more than one Sound Blaster audio card of the same type on your computer.

Installing the Software

The software installation in NT 4.0 includes the installation of audio drivers.

1. Insert the installation disc into your CD-ROM drive. The AutoPlay screen appears.
 2. Follow the instructions on the screen to complete the installation.
-

Setting Up Joystick Drivers in Windows NT 4.0

1. Log on to your computer as Administrator.
 2. Click the Start button, point to Settings, and then click Control Panel.
 3. Double-click the Multimedia icon, click the Devices tab, and then click the Add button.
 4. In the List of Drivers box of the Add dialog box, select Unlisted Or Updated Driver, and then click the OK button.
 5. Insert the Windows NT 4.0 CD-ROM which contains the JOYSTICK.SYS file into the CD-ROM drive.
 6. In the Install Driver dialog box, type
E:\DRVLIB\MULTIMED\JOYSTICK\X86
if E:\ is the CD-ROM drive letter, and then click the OK button.
 7. In the Add Unlisted Or Updated Driver dialog box, click Analog Joystick Driver, and then click the OK button.
 8. In the Microsoft Joystick Configuration dialog box, click the OK button.
 9. Restart your computer when prompted.
-

[Back to Contents Page](#)

[Back to Contents Page](#)

Installing Software in Windows 2000: Sound Blaster Live! Value Sound Card User's Guide

After you have installed the card and switched on your system, Windows 2000 automatically detects the card and installs the basic audio drivers. When you install the applications, the specific audio drivers for your card will be installed.

To install the applications:

1. Insert the installation disc into your CD-ROM drive. The AutoPlay screen appears.
 2. Follow the instructions on the screen to complete the installation.
-

[Back to Contents Page](#)