

# HVR-M25J/M25U/M25N/M25E/ M25P/M25C RMT-DS5

## SERVICE MANUAL

Ver 1.0 2006.05

Revision History

How to use  
Acrobat Reader



*US Model  
Canadian Model  
AEP Model  
E Model  
Chinese Model  
Japanese Model*

R MECHANISM (MDX-R211)

### Link

• SPECIFICATIONS	• BLOCK DIAGRAMS	• REPAIR PARTS LIST
• MODEL INFORMATION TABLE	• FRAME SCHEMATIC DIAGRAM	• ADJUSTMENT
• SERVICE NOTE	• SCHEMATIC DIAGRAMS	• INSTRUCTION MANUAL
• DISASSEMBLY	• PRINTED WIRING BOARDS	

The components identified by mark  $\triangle$  or dotted line with mark  $\triangle$  are critical for safety. Replace only with part number specified.

Les composants identifiés par une marque  $\triangle$  sont critiques pour la sécurité. Ne les remplacer que par une pièce portant le numéro spécifié.

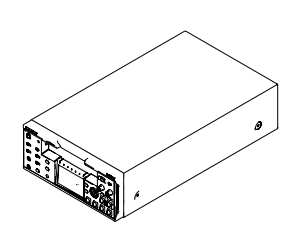
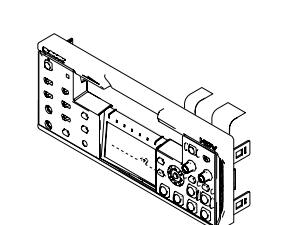
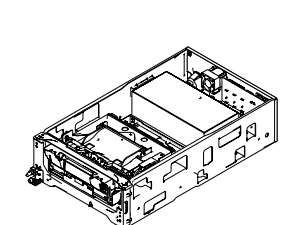
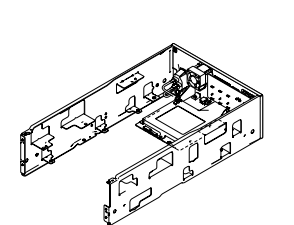
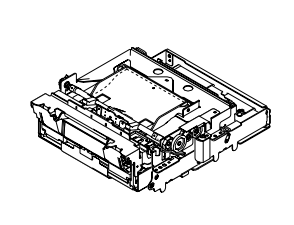
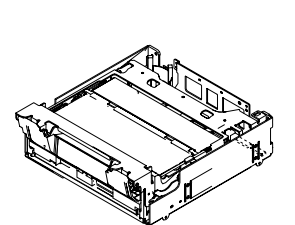
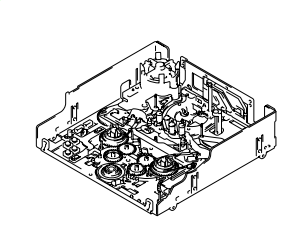
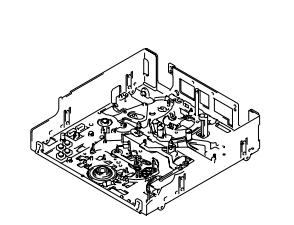
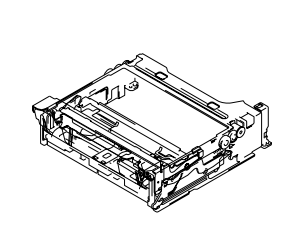


## DIGITAL HD VIDEOCASSETTE RECORDER

# SONY®

## 5. REPAIR PARTS LIST

NOTE: Characters **A** to **Z** of the electrical parts list indicate location of exploded views in which the desired part is shown.

Link	EXPLODED VIEWS			
				
<b>A</b>	<b>B</b>	<b>C</b>	<b>D</b>	
OVERALL ASSEMBLY	FRONT PANEL BLOCK	CHASSIS BLOCK	REAR PANEL BLOCK	
				
<b>E</b>	<b>F</b>	<b>G</b>	<b>H</b>	
CMX BLOCK	MECHANISM DECK ASSEMBLY-1	MECHANISM DECK ASSEMBLY-2	MECHANISM DECK ASSEMBLY-3	
				
<b>I</b>				
MECHANISM DECK ASSEMBLY-4				

Link	ELECTRICAL PARTS LIST			ACCESSORIES
• FP-104 FLEXIBLE BOARD <b>F</b>	• JK-309 BOARD <b>D</b>	• POWER BLOCK (ACS1581-MA BOARD) <b>C</b>		
• FP-248 FLEXIBLE BOARD <b>H</b>	• JV-002 BOARD <b>D</b>	• RP-243 BOARD <b>E</b>		
• FR-253 BOARD <b>B</b>	• MD-76 BOARD <b>H</b>	• SH-023 BOARD <b>E</b>		
• HP-141 BOARD <b>C</b>	• PD-287 BOARD <b>B</b>	• VD-036 BOARD <b>E</b>		

## 5. REPAIR PARTS LIST

### 5. REPAIR PARTS LIST

**(ENGLISH)**

**NOTE:**

- -XX, -X mean standardized parts, so they may have some differences from the original one.
- Items marked “\*” are not stocked since they are seldom required for routine service. Some delay should be anticipated when ordering these items.
- The mechanical parts with no reference number in the exploded views are not supplied.
- Due to standardization, replacements in the parts list may be different from the parts specified in the diagrams or the components used on the set.
- CAPACITORS:  
uF:  $\mu$ F
- COILS  
uH:  $\mu$ H
- RESISTORS  
All resistors are in ohms.  
METAL: metal-film resistor  
METAL OXIDE: Metal Oxide-film resistor  
F: nonflammable
- SEMICONDUCTORS  
In each case, u:  $\mu$ , for example:  
uA...:  $\mu$ A..., uPA...,  $\mu$ PA...,  
uPB...,  $\mu$ PB..., uPC...,  $\mu$ PC...,  
uPD...,  $\mu$ PD...

When indicating parts by reference number, please include the board name.

The components identified by mark  $\triangle$  or dotted line with mark  $\triangle$  are critical for safety. Replace only with part number specified.

Les composants identifiés par une marque  $\triangle$  sont critiques pour la sécurité. Ne les remplacer que par une pièce portant le numéro spécifié.

- Color Indication of Appearance Parts  
Example:  
(SILVER) : Cabinet's Color  
(Silver) : Parts Color

**(JAPANESE)**

**【使用上の注意】**

- ここに記載されている部品は、補修用部品であるため、回路図及びセットに付いている部品と異なる場合があります。
- -XX, -Xは標準化部品のため、セットに付いている部品と異なる場合があります。
- \*印の部品は常備在庫していません。
- コンデンサの単位でuFは $\mu$ Fを示します。
- 抵抗の単位 $\Omega$ は省略してあります。  
金 被：金属被膜抵抗。  
サンキン：酸化金属被膜抵抗。
- インダクタの単位でuHは $\mu$ Hを示します。
- 半導体の名称でuA..., uPA..., uPB..., uPC..., uPD...等はそれぞれ $\mu$ A...,  $\mu$ PA...,  $\mu$ PB...,  $\mu$ PC...,  $\mu$ PD...を示します。

お願い  
図面番号で部品を指定するときは基板名又はブロックを併せて指定してください。

$\triangle$ 印の部品、または $\triangle$ 印付の点線で囲まれた部品は、安全性を維持するために、重要な部品です。従って交換時は、必ず指定の部品を使用してください。

- 外装部品色表示  
例：  
(SILVER):セットの色を表す。  
(Silver) : 部品の色を表す。

- Abbreviation  
AR : Argentine model  
AUS : Australian model  
BR : Brazilian model  
CH : Chinese model  
CND : Canadian model  
EE : East European model  
HK : Hong Kong model  
J : Japanese model  
JE : Tourist model  
KR : Korea model  
NE : North European model

# 5. REPAIR PARTS LIST

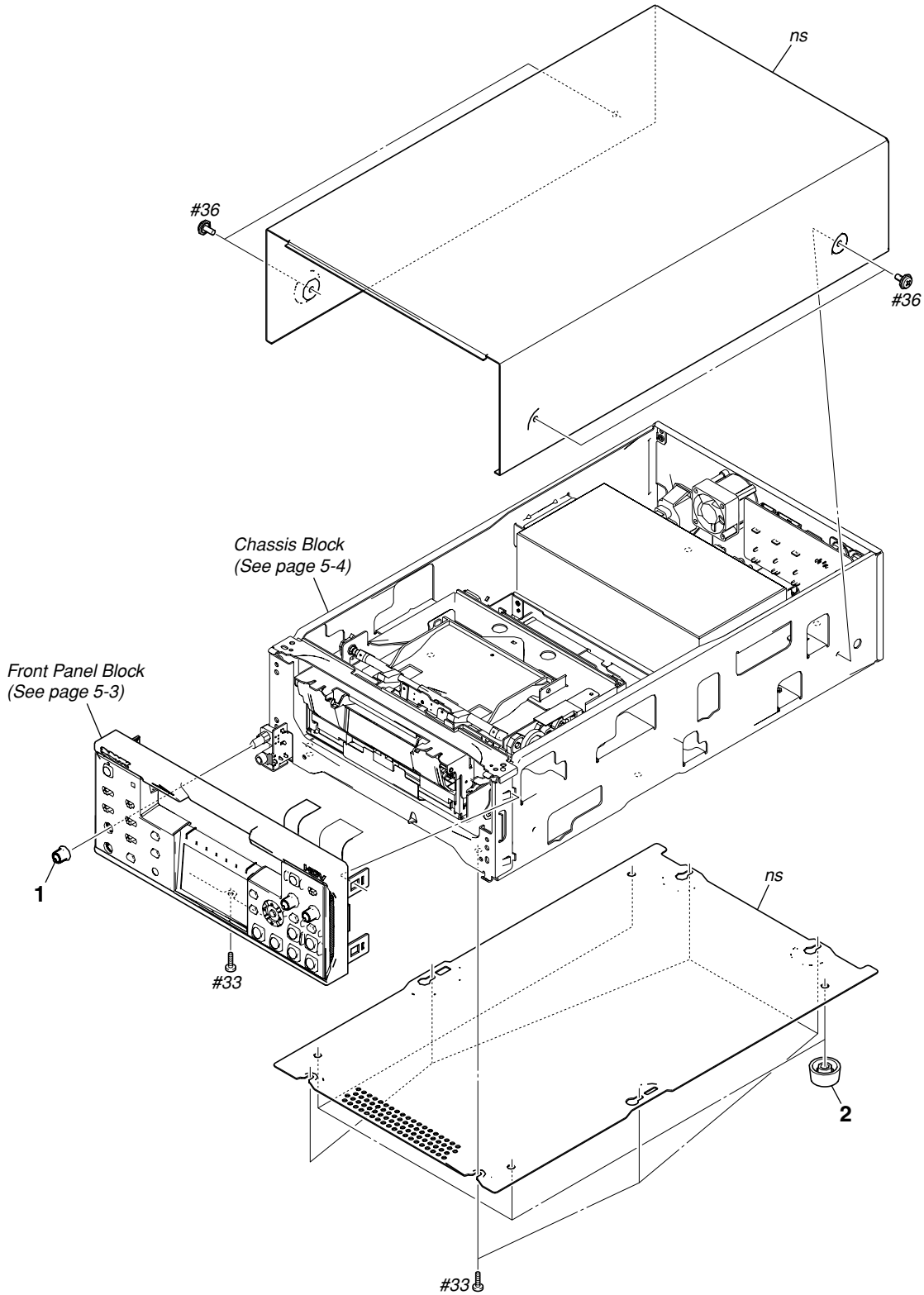
## DISASSEMBLY

## HARDWARE LIST

### 5-1. EXPLODED VIEWS

#### 5-1-1. OVERALL ASSEMBLY

ns: not supplied



Ref. No.	Part No.	Description
1	2-660-352-01	KNOB, VOL
2	3-987-171-01	FOOT (FF-004)

Ref. No.	Part No.	Description
#33	3-077-331-21	+BV3 (3-CR) (Silver)
#36	4-886-821-11	SCREW, M3 CASE (Silver)

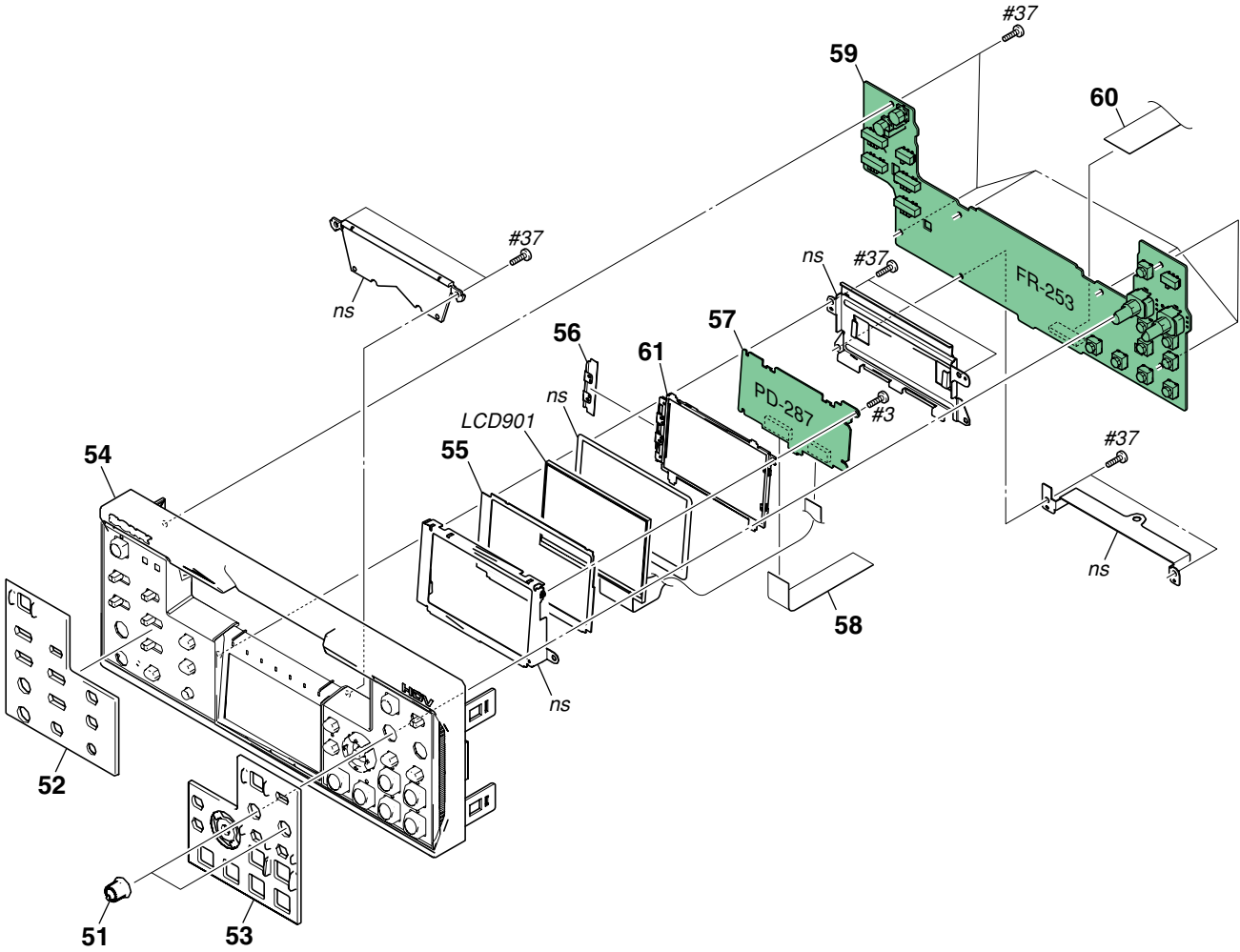
# 5. REPAIR PARTS LIST

## DISASSEMBLY

## HARDWARE LIST

### 5-1-2. FRONT PANEL BLOCK

ns: not supplied



Ref. No.	Part No.	Description
51	2-660-352-01	KNOB, VOL
52	2-673-187-01	PLATE (L), ORNAMENTAL
53	2-673-188-01	PLATE (R), ORNAMENTAL
54	X-2103-340-1	PANEL ASSY, FRONT
55	2-659-717-01	CUSHION, PANEL
* 56	2-638-780-01	CLIP
57	A-1166-868-A	PD-287 BOARD, COMPLETE

Ref. No.	Part No.	Description
58	1-832-964-11	CABLE, FLEXIBLE FLAT (FPD-001)
59	A-1166-869-A	FR-253 BOARD, COMPLETE
60	1-832-959-11	CABLE, FLEXIBLE FLAT (FFR-001)
61	A-1153-648-A	BLOCK (2.7), LIGHT GUIDE PLATE
LCD901	8-753-256-21	ACX547AK-1
#3	2-660-401-01	SCREW (M1.7), NEW TRU-STAR, P2 (Red)
#37	3-080-206-31	SCREW, TAPPING, P2 (Black)

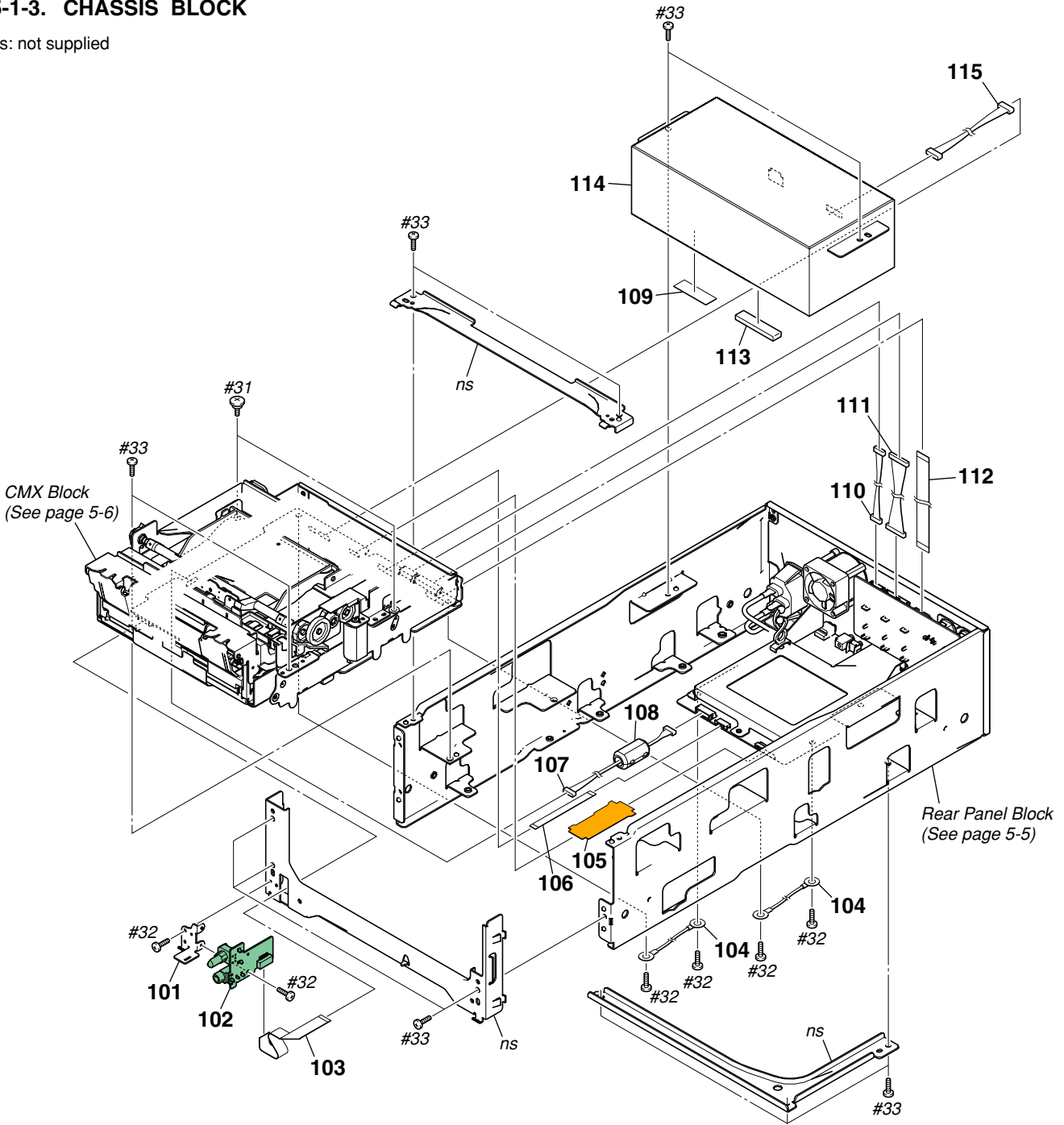
# 5. REPAIR PARTS LIST

## DISASSEMBLY

## HARDWARE LIST

### 5-1-3. CHASSIS BLOCK

ns: not supplied



• Refer to page 5-1 for mark △.

Ref. No.	Part No.	Description
101	3-072-975-01	HP BRACKET
102	A-1166-870-A	HP-141 BOARD, COMPLETE
103	1-832-960-11	CABLE, FLEXIBLE FLAT (FHP-002)
104	1-964-845-11	HARNESS (LG-052)
105	1-870-263-11	FP-506 FLEXIBLE BOARD
106	1-832-962-11	CABLE, FLEXIBLE FLAT (FJK-001)
107	1-964-812-11	HARNESS (DV-068)
108	1-543-793-11	FILTER, CLAMP (FERRITE CORE)
109	3-941-343-01	TAPE (A)
110	1-964-811-11	HARNESS (CP-097)

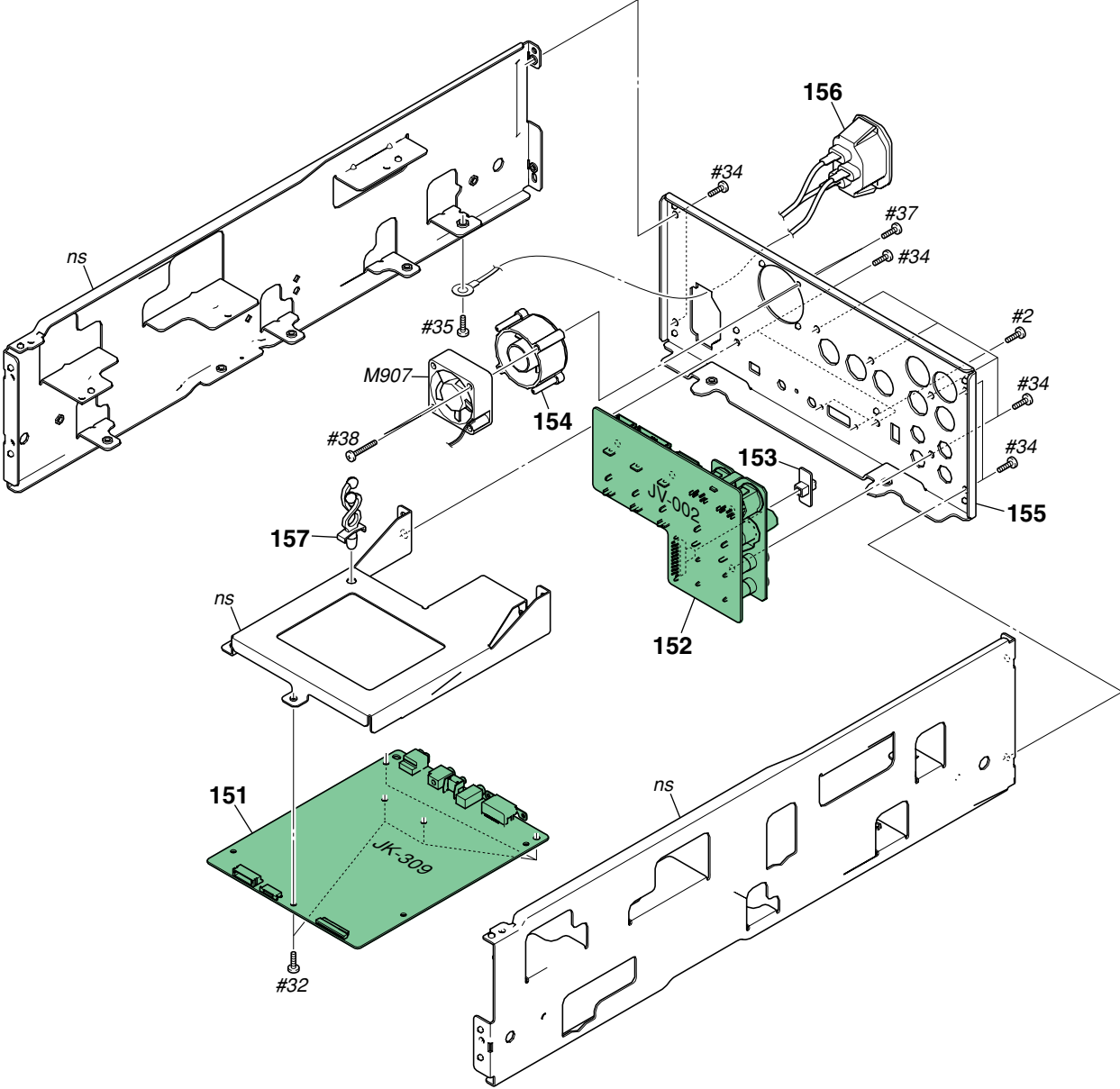
Ref. No.	Part No.	Description
111	1-964-810-11	HARNESS (SV-001)
112	1-832-961-11	CABLE, FLEXIBLE FLAT (FJV-002)
113	2-583-498-01	CUSHION (VC (FRONT))
△ 114	1-468-666-12	POWER BLOCK
115	1-964-814-11	HARNESS (PW-066)
#31	2-102-434-01	SCREW (M3 (ECO)), STEP (Silver)
#32	2-102-498-01	SCREW (2 (G TO)) (ECO) (Silver)
#33	3-077-331-21	+BV3 (3-CR) (Silver)

# 5. REPAIR PARTS LIST

## HARDWARE LIST

### 5-1-4. REAR PANEL BLOCK

ns: not supplied



Ref. No.	Part No.	Description
151	A-1179-542-A	JK-309 BOARD, COMPLETE (SERVICE)
152	A-1166-865-A	JV-002 BOARD, COMPLETE
* 153	3-063-337-01	SWITCH, SLIDE
154	2-676-029-01	HOLDER, FAN
155	2-660-355-01	PANEL, REAR
156	1-961-664-11	HARNESS (AC-249)
157	3-175-037-01	PURSE LOCK
M907	1-787-505-11	MOTOR, FAN

Ref. No.	Part No.	Description
#2	2-635-562-31	SCREW (M1.7) (Black)
#32	2-102-498-01	SCREW (2 (G TO)) (ECO) (Silver)
#34	3-077-331-41	+BV3 (3-CR) (Black)
#35	3-975-291-02	SCREW (4X6) (Silver)
#37	3-080-206-31	SCREW, TAPPING, P2 (Black)
#38	7-685-651-79	SCREW, TAPPING, +BV 3X20, TYPE 2, IT-3 (Silver)

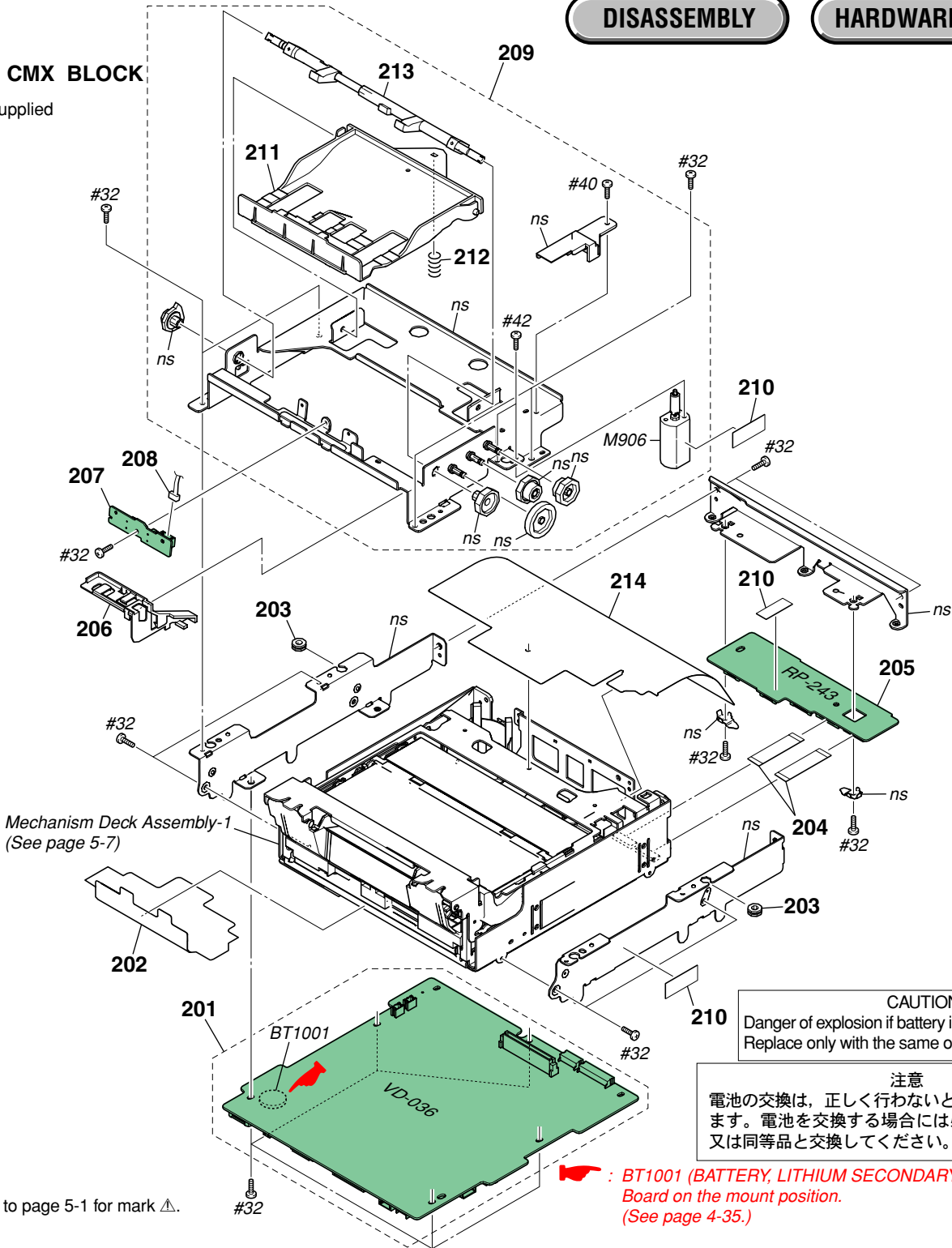
# 5. REPAIR PARTS LIST

## DISASSEMBLY

## HARDWARE LIST

### 5-1-5. CMX BLOCK

ns: not supplied



**CAUTION**  
 Danger of explosion if battery is incorrectly replaced.  
 Replace only with the same or equivalent type.

**注意**  
 電池の交換は、正しく行わないと破裂する恐れがあります。  
 電池を交換する場合には必ず同じ型名の電池  
 又は同等品と交換してください。

**▶** : BT1001 (BATTERY, LITHIUM SECONDARY)  
 Board on the mount position.  
 (See page 4-35.)

• Refer to page 5-1 for mark △.

Ref. No.	Part No.	Description
201	A-1166-873-A	VD-036 BOARD, COMPLETE (SERVICE)
202	2-679-684-01	SHEET MD
203	3-974-011-01	RUBBER, VIBRATION PROOF
204	1-832-958-11	CABLE, FLEXIBLE FLAT (FRP-001)
205	A-1166-862-A	RP-243 BOARD, COMPLETE
206	3-057-667-01	HOLDER, HARNESS
207	A-1166-871-A	SH-023 BOARD, COMPLETE
208	1-964-809-11	HARNESS (SC-118)
209	A-1166-872-A	CK BLOCK ASSY
210	3-941-343-01	TAPE (A)

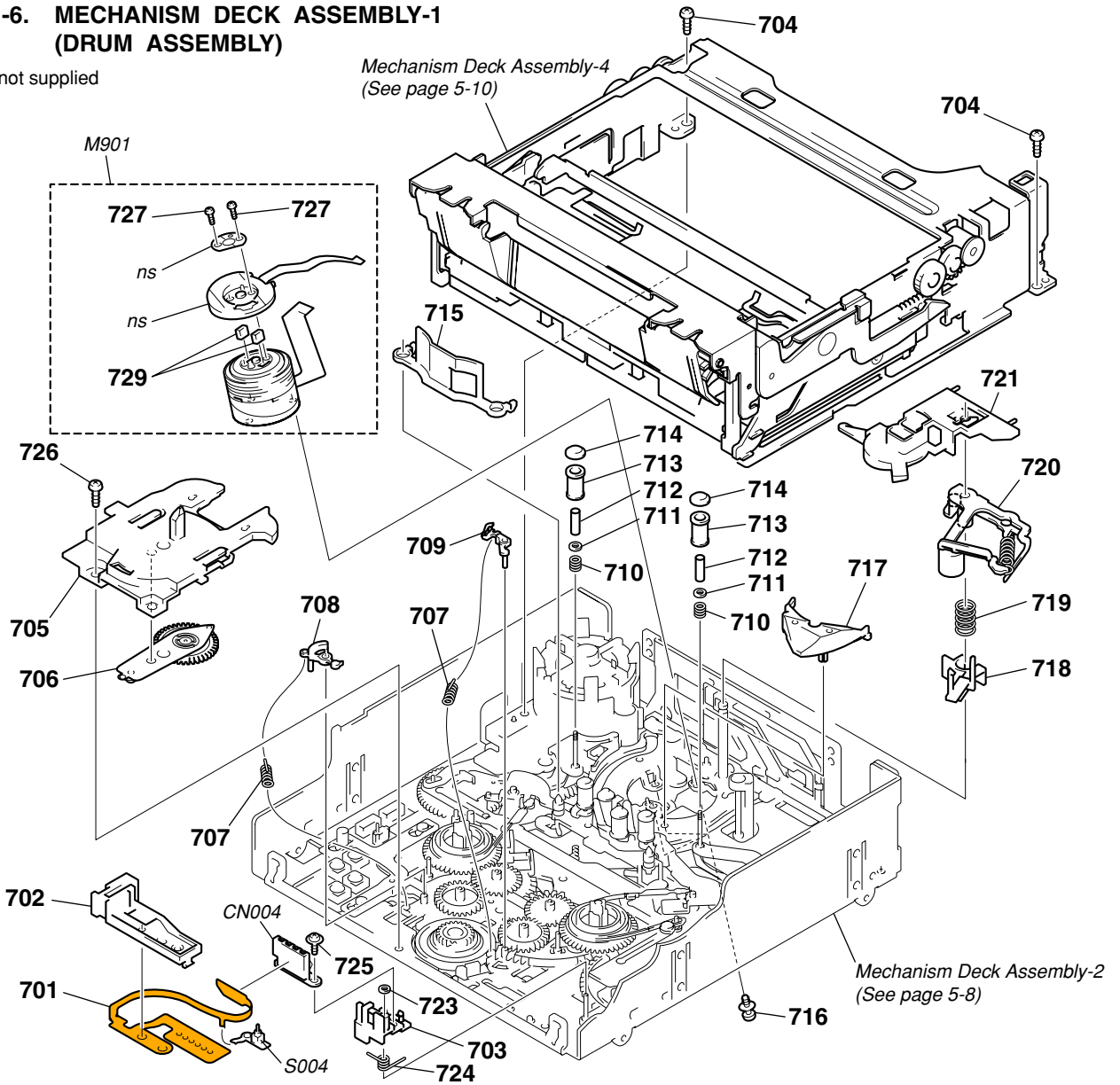
Ref. No.	Part No.	Description
211	2-665-055-01	LEVER (4150), DETECTION
212	3-058-376-01	SPRING, COMPRESSION
213	X-3949-980-1	LEVER ASSY, CK
* 214	2-698-077-01	SHEET (DEW BARRIER)
△ BT1001	1-756-128-11	BATTERY, LITHIUM (SECONDARY)
M906	X-3949-979-1	MOTOR (CK) ASSY
#32	2-102-498-01	SCREW (2 (G TO)) (ECO) (Silver)
#40	7-685-851-04	SCREW +BVTT 2X4 (S) (Silver)
#42	7-628-253-00	SCREW +PS 2X4 (Silver)



## 5. REPAIR PARTS LIST

### 5-1-6. MECHANISM DECK ASSEMBLY-1 (DRUM ASSEMBLY)

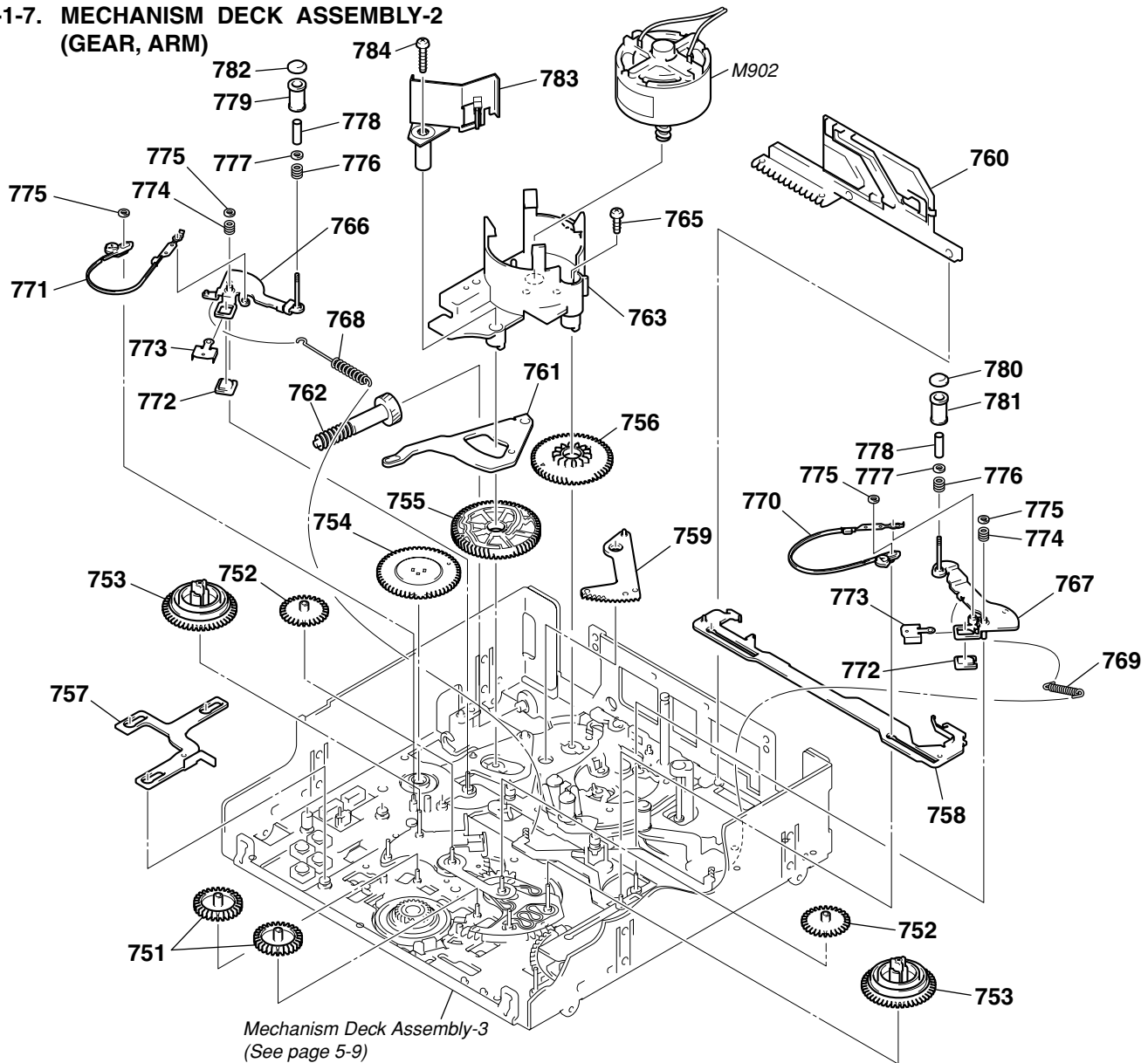
ns: not supplied



Ref. No.	Part No.	Description	Ref. No.	Part No.	Description
701	1-675-561-11	FP-104 FLEXIBLE BOARD	716	A-7094-608-C	SCREW ASSY, DRUM FITTING
* 702	3-057-351-01	GUIDE, MIC BASE	717	3-973-171-01	SUPPORT, TAPE
703	3-057-350-02	BASE, MIC	718	3-057-227-01	RETAINER, TAPE
704	3-732-817-11	SCREW (2X4.5), TAPPING	719	3-973-818-01	SPRING, COMPRESSION (TAPE RETAINER)
705	3-057-319-05	RETAINER, PENDULUM	720	X-3949-915-1	ARM ASSY, PINCH
706	X-3949-922-1	ARM ASSY, PENDULUM	721	3-057-228-01	CAP, DRUM
707	3-057-286-01	SPRING, EXTENSION (BRAKE)	723	3-726-829-01	WASHER, STOPPER
708	3-057-280-01	ARM (S), BRAKE	724	3-057-353-01	SPRING, MIC BASE
709	3-057-279-01	BRAKE (T), RATCHET	725	3-318-201-91	SCREW (B) (1.4X3), TAPPING
710	3-057-232-01	SPRING, COMPRESSION (TG)	726	3-973-266-11	SCREW (M2X2.2 (MEK)), HEAD
711	3-057-238-01	RING, TG	727	3-703-816-74	SCREW (M1.4X4.5)
712	3-057-237-01	SLEEVE, TG	729	1-770-363-11	CONNECTOR, ELASTIC
713	3-057-235-01	ROLLER, TG	CN004	1-770-312-21	CONNECTOR 4P
714	3-057-234-01	FLANGE, TG UPPER	M901	A-1193-393-A	DRUM ASSY (DEH-21D/J-RP)
715	3-057-379-01	GUARD, GUIDE	S004	1-762-351-22	SWITCH, PUSH (1 KEY) (REC PROOF)

## 5. REPAIR PARTS LIST

### 5-1-7. MECHANISM DECK ASSEMBLY-2 (GEAR, ARM)

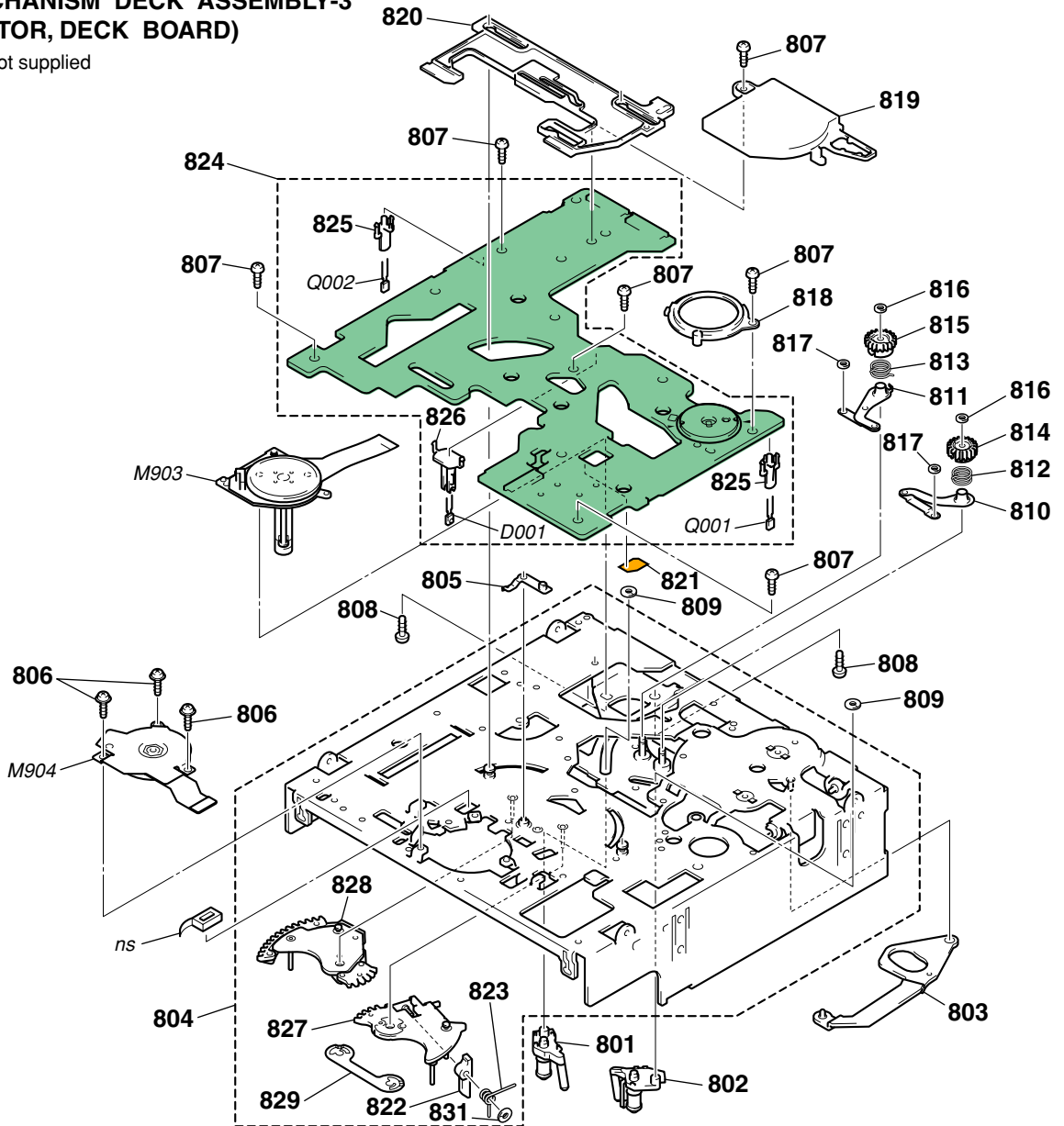


Ref. No.	Part No.	Description	Ref. No.	Part No.	Description
751	A-7096-800-A	GEAR (A) ASSY, IDLER	769	3-057-296-02	SPRING, EXTENSION (TG7)
752	3-057-311-01	GEAR (B), IDLER	770	X-3949-921-1	BAND (TG7) ASSY
753	A-7094-599-A	REEL (LARGE) BLOCK ASSY	771	X-3949-920-1	BAND (TG2) ASSY
754	3-057-267-01	GEAR, ENCODER	772	3-057-281-01	MAGNET, ET
755	3-057-294-01	GEAR, MAIN CAM	773	3-057-336-01	HOLDER, MAGNET
756	3-973-140-01	GEAR, SUB CAM	774	3-057-344-01	SPRING, COMPRESSION (TG ARM)
* 757	3-057-302-01	SLIDER, SBR	775	3-726-829-01	WASHER, STOPPER
758	3-057-314-02	SLIDER, SUB	776	3-057-232-01	SPRING, COMPRESSION (TG)
759	X-3950-816-2	ARM ASSY, LOADING	777	3-057-238-01	RING, TG
760	3-057-221-01	SLIDER, PINCH	778	3-057-237-01	SLEEVE, TG
* 761	3-057-252-01	ARM, SUB SLIDER	779	3-057-235-01	ROLLER, TG
762	3-973-159-01	GEAR, JOINT	780	3-057-234-01	FLANGE, TG UPPER
763	3-057-222-02	HOLDER, MOTOR	781	3-057-337-01	ROLLER, TG7
765	3-973-266-11	SCREW (M2X2.2 (MEK)), HEAD	782	3-063-887-01	FLANGE (2), TG UPPER
766	X-3949-918-1	ARM ASSY, TG2	783	X-2148-017-1	TC ASSY
767	X-3949-919-1	ARM ASSY, TG7	784	2-685-919-01	SCREW (M2X13)
768	3-057-295-01	SPRING, EXTENSION (TG2)	M902	X-3946-702-1	MOTOR ASSY, CAM

## 5. REPAIR PARTS LIST

### 5-1-8. MECHANISM DECK ASSEMBLY-3 (MOTOR, DECK BOARD)

ns : not supplied

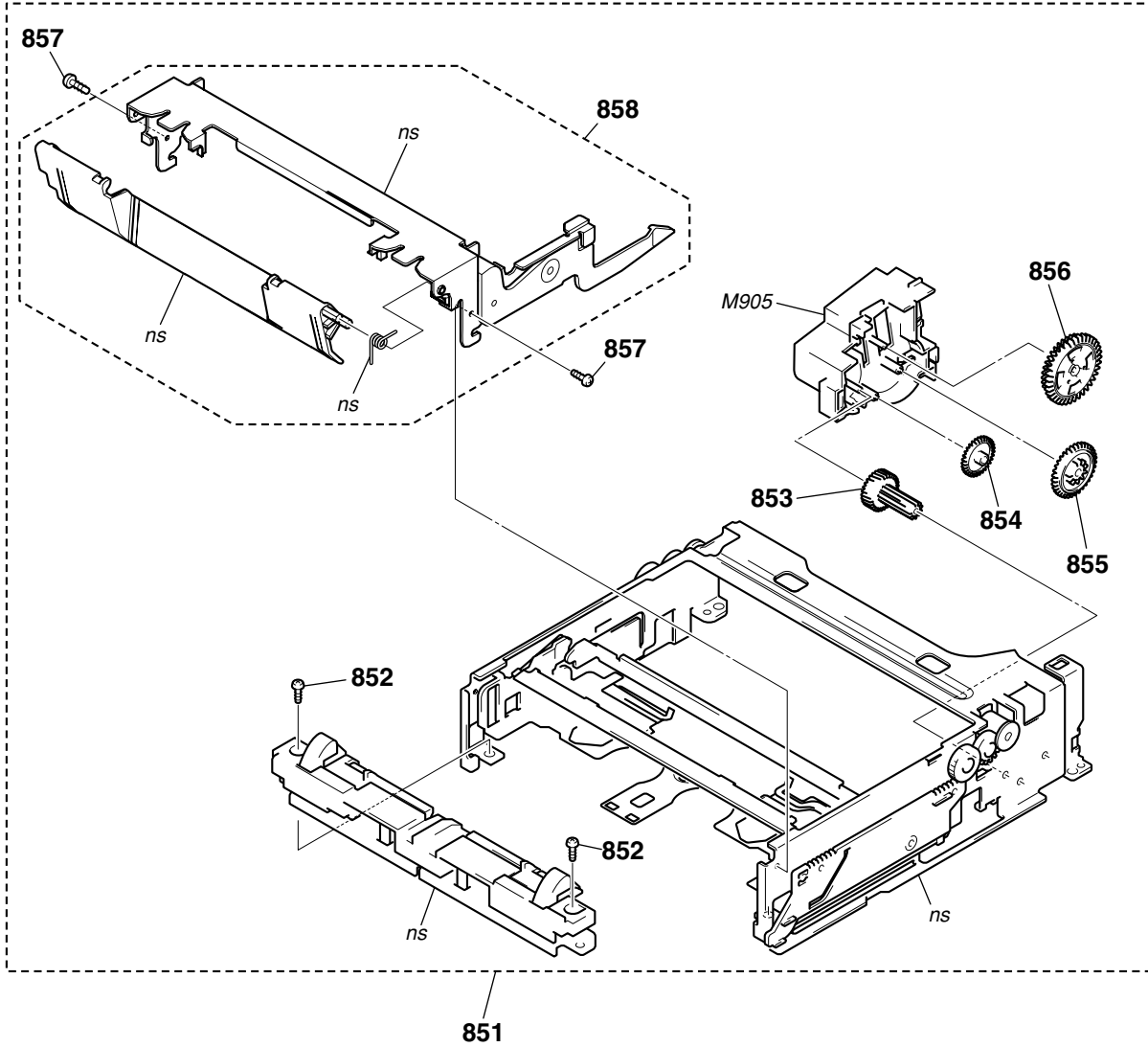


Ref. No.	Part No.	Description	Ref. No.	Part No.	Description
	801	A-7025-007-A COASTER (T) BLOCK ASSY	820	3-057-282-01	SLIDER, MAIN
	802	A-7096-267-A COASTER (S) BLOCK ASSY (R)	821	1-657-785-11	FP-248 FLEXIBLE BOARD (DEW SENSOR)
*	803	3-057-283-02 ARM, MAIN SLIDER	822	3-057-320-01	BLOCK, REEL LOCK RELEASE
	804	X-2022-253-1 CHASSIS ASSY, MECHANICAL	823	3-057-354-01	SPRING, REEL LOCK RELEASE
	805	X-3949-924-1 STOPPER ASSY, PENDULUM	824	A-1154-723-A	MD-76 BOARD, COMPLETE
	806	3-947-503-21 SCREW (M1.4)			
	807	3-732-817-11 SCREW (2X4.5), TAPPING	*	825	3-066-170-01 HOLDER (A), SENSOR
	808	3-973-266-11 SCREW (M2X2.2 (MEK)), HEAD	*	826	3-057-555-01 HOLDER, LED
	809	3-973-142-01 STOPPER, COASTER PUNCHING	827	X-3950-199-1	BASE (S) ASSY, REEL (SERVICE)
	810	X-3946-690-2 ARM (S) ASSY, GL	828	X-3950-200-2	BASE (T) ASSY, REEL (SERVICE)
	811	X-3946-689-2 ARM (T) ASSY, GL	829	3-057-265-01	RETAINER, REEL BASE
	812	3-973-146-02 SPRING (S), GL TORSION	831	3-726-829-01	WASHER, STOPPER
	813	3-973-156-02 SPRING (T), GL TORSION	D001	6-500-652-01	DIODE GL453SE0000F (TAPE LED)
	814	3-973-264-01 GEAR (S), GL	M903	8-835-648-13	MOTOR, DC SCD17A/C-NP (CAPSTAN)
	815	3-973-138-01 GEAR (T), GL	M904	X-3949-928-1	MOTOR ASSY, REEL
	816	3-727-176-01 WASHER, STOPPER	Q001	6-500-402-01	TRANISTOR PT4850FE000F (TAPE END SENSOR)
	817	3-973-143-01 WASHER, COASTER STOPPER			
	818	3-057-339-01 COVER, ENCODER	Q002	6-500-402-01	TRANISTOR PT4850FE000F (TAPE TOP SENSOR)
	819	3-057-340-01 COVER, CAPSTAN			

## 5. REPAIR PARTS LIST

### 5-1-9. MECHANISM DECK ASSEMBLY-4 (CASSETTE COMPARTMENT)

ns : not supplied


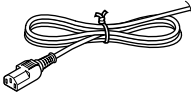

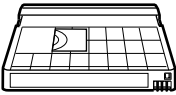


Ref. No.	Part No.	Description
851	A-1192-518-A	BLOCK ASSY (DOOR TO)
852	3-732-817-11	SCREW (2X4.5), TAPPING
853	3-057-253-01	GEAR, WHEEL
854	3-057-254-01	GEAR (A)
855	3-057-255-01	GEAR (B)

Ref. No.	Part No.	Description
856	A-7094-689-B	GEAR (CD) BLOCK ASSY (SERVICE)
857	3-947-503-21	SCREW (M1.4)
858	A-1192-516-A	DOOR BLOCK ASSY, FL
M905	X-3949-925-4	MOTOR ASSY, FL


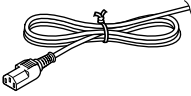

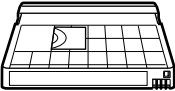
## • E MODEL

### Checking supplied accessories.

 <p>Battery Case Lid (for RMT-DS5) 3-076-233-01</p>		<h3>Other accessories</h3>
<p>Remote Commander (RMT-DS5) 1-477-220-11</p>	<p>Power Cord △ 1-551-812-11 (M25U/M25N) △ 1-782-929-12 (M25P) △ 1-783-481-42 (M25C)</p>	
		
<p>Size AA Batteries (not supplied)</p>	<p>Cleaning Cassette 8-883-121-64</p>	

## • J MODEL

### 付属品

 <p>電池ぶた (RMT-DS5用) 3-076-233-01</p>		<p>図面 番号</p>	<p>部品コード 部品名 2-678-737-01取扱説明書(日本語)</p>
<p>リモコン (RMT-DS5) 1-477-220-11</p>	<p>電源ケーブル △ 1-783-795-81</p>		
			
<p>単3形乾電池 (供給せず)</p>	<p>クリーニングカセット 8-883-121-64</p>		

• Refer to page 5-1 for mark △.

# Viditec

Humberto 1° 2889 - C1231ACE - Bs As, Argentina  
Tel: +54 11 4122-1200 Fax: +54 11 4308-5493

ingenieria@viditec.com.ar  
viditec.com