

KRONOS Sound Libraries EXs Expansion Samples



Owner's Manual

KORG

EXs11 Legendary Strings

Thank you for purchasing EXs11 Legendary Strings for the Korg KRONOS.

Contents: Approximately 2.8 GB of PCM samples, 128 Programs, 48 Combinations, 122 Wave Sequences

This collection delivers a wide vocabulary of string sounds. Choose from solo performances created on coveted instruments such as a Stradivarius, to the sound of a full orchestra. In addition to samples of individual performance techniques such as trill, vibrato, and pizzicato, the collection also includes ensembles offering differing numbers of players, providing everything needed for meticulous production work. Large samples allow the nuances of the performances to be captured, making this the ultimate collection of string sounds.

This owner's manual explains how to install EXs11 on the KRONOS, how to load the samples, Programs, Combinations and Wave Sequences, and how to purchase an authorization code and authorize the library. The Voice Name List details all of the included Programs, Combinations, Wave Sequences and Multisamples.

System requirements

To install EXs11, you'll need:

- KRONOS system version 1.5.0 or later
- Approximately 2.8 GB or more space on the internal disk

To load the sounds into memory, you'll need:

- Approximately 702 MB free RAM

3 GB of RAM recommended

To load EXs11 at the same time as the factory preload samples, 3 GB of physical RAM is required. KRONOS system version 1.5.0 adds support for the professional installation of additional RAM; for more information, see the documentation for the 1.5.0 update.

With 2 GB of physical RAM, you can still use EXs11, but you'll need to unload some of the preload samples first. For more information, see "Loading EXs11 with only 2 GB of installed memory" on page 8.

To confirm the amount of installed RAM:

1. **Press the GLOBAL button to enter the Global mode.**
2. **Go to the Options Info page.**
 - The amount of installed RAM is shown by the Memory parameter at the top-right of the display, in the System section.

Demo mode

Initially, EXs11 will be in demo mode. You'll be able to play, edit, and save Programs, Combis, Drum Kits, Wave Sequences, and Songs which use EXs11 — but until you purchase an authorization code, their sound will fade out periodically. To purchase an authorization code, go to the online shop at www.korg.com/kronos. For more information, see "Purchasing and authorizing EXs11" on page 12.

Preparations before installing

To install EXs11, you'll need KRONOS system version 1.5.0 or later, and at least 2.8 GB of free space on the internal disk.

To check the version of your KRONOS software:

1. **Press the front panel GLOBAL button to enter Global mode.**
2. **Go to the Options Info page.**

The version number is shown under "System" in the upper right-hand corner of the display.

3. **Confirm that the version is 1.5.0 or later. If not, go to www.korg.com/kronos and download and install the latest system software.**

To check the amount of free space on the internal disk:

1. **Press the front panel DISK button to enter Disk mode.**
2. **Go to the Media Info page.**
3. **Set the Drive Select parameter to HDD: INTERNAL HD.**
4. **Confirm that the Free Size 2.8G (GB) or more. If not, please free up space on the disk by removing unnecessary data.**

You can remove unwanted files from the disk by using the Utility page's **Delete** menu command. If you want to keep the files for your archives, you can use the **Copy** menu command to save them to an external USB storage device.

Installing EXs11

1. **Un-zip the downloaded file.**

Un-zipping the archive will result in a folder containing several different files and a sub-folder, as shown below.

EXs11 folder contents

File/folder name	Notes
EXs11.exsins	These are data files used by the installer.
S011	
EXs11.tar.gz	
EXs11.PCG	These files contain the Programs, Combinations and Wave Sequences (PCG). All of these are included in the installer, but are also provided separately for your convenience.
Manuals	This folder includes the manual that you're reading now, in English, Japanese, German, and French versions: EXs11_OM_E1.PDF EXs11_OM_F1.PDF EXs11_OM_G1.PDF EXs11_OM_J1.PDF

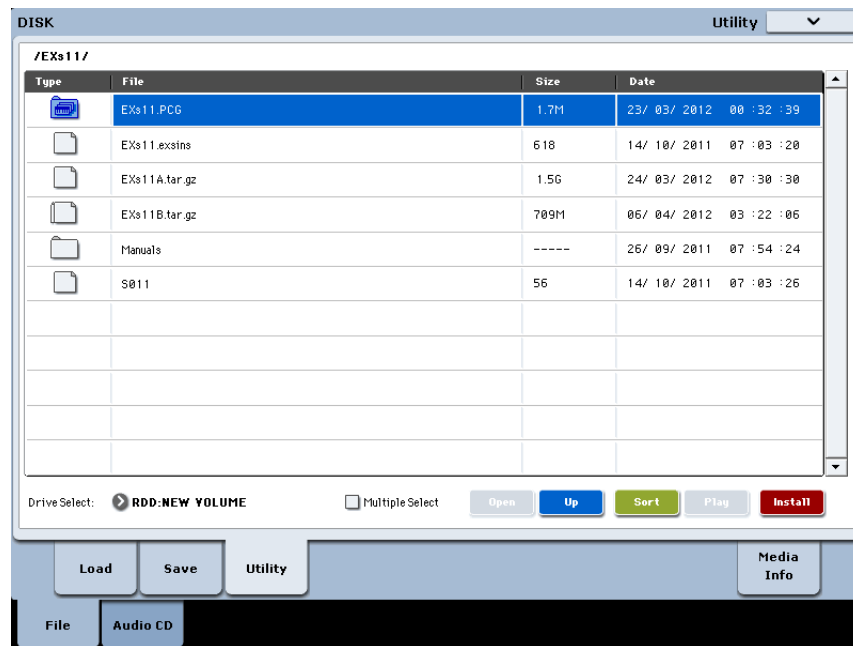
2. **Copy the un-zipped EXs11 folder to a USB storage device, such as flash memory or a USB hard drive.**
3. **Safely disconnect the USB storage device from your computer.**
4. **Connect the USB storage device to one of the KRONOS's two USB A ports.**
5. **Press the DISK button to enter Disk mode.**
6. **Go to the Disk Utility page.**
7. **Using the Drive Select menu at the bottom of the page, select the USB storage device.**

You may need to wait a few seconds after connecting the device before it is recognized.

8. **Open the folder containing the EXs data from step 2.**

9. Select the file EXs11.exsins.

The “exsins” suffix stands for “EXs INStaller.”



When a .exsins file is selected, the **Load** button changes to read **Install**. Only one EXs can be installed at a time. If **Multiple Select** is On, **Install** will be disabled.

10. Select Install EXs from the menu, or press the Install button.

The system will check to confirm that the installation files are valid, and that there is sufficient space on the SSD to install the EXs. Next, a dialog box will appear:



Found installer for: [EXs name]

Space required: [nnn] GB

SSD1: [disk name] [nnn] GB available

11. Press Install to continue with the installation.

The confirmation message “Are you sure?” will appear.

If you decide to cancel the installation, press the **Cancel** button.

12. Press OK to continue with the installation.

The installation will then begin. This may take a while; a progress bar shows the installation as it proceeds.

Next, the newly installed files will be verified. After the verification has completed successfully, the progress bar will disappear, and the installation is complete. The EXs sample data itself is installed on an invisible, protected part of the disk. To use the EXs, you'll load its associated files, which will be installed into a new folder named EXs11 Legendary Strings within the Korg Options folder, as shown below.

EXs11 Legendary Strings folder contents

File/folder name	Notes
EXs11.KSC	This is the Korg Sample Collection file, which lets you load all of the new samples at once.
EXs11.PCG	This file contains the new Programs, Combinations and Wave Sequences.

Note: EXs11.PCG is also included in the unzipped EXs11.zip file. This is identical to the installed EXs11.PCG file. Use them as backups.

13. Turn the power switch off, wait 10 seconds, and then turn it on again.

Error messages

When installing, error messages may be displayed to indicate problems, as described below.


"Error: invalid option file"

This means that the installation data is corrupted. Copy the file to the USB media again, or if that fails, download the data again.

"Error: not enough disk space for the installation"

This means that the internal disk is too full. Remove data from the disk, backing it up to USB media, in order to free up space.

Loading the new sounds and samples

-  Before loading, make sure to back up important data onto the internal disk or a USB storage device. When you load these files into memory, data previously stored in those locations will be overwritten.

Default load locations

By default, the Programs, Combinations and Wave Sequences will be loaded into the following locations:

- Programs: U-G000...127
- Combinations: U-G000...047
- Wave Sequences: U-B000...031, U-C000...031, U-D000...031, U-E000...025

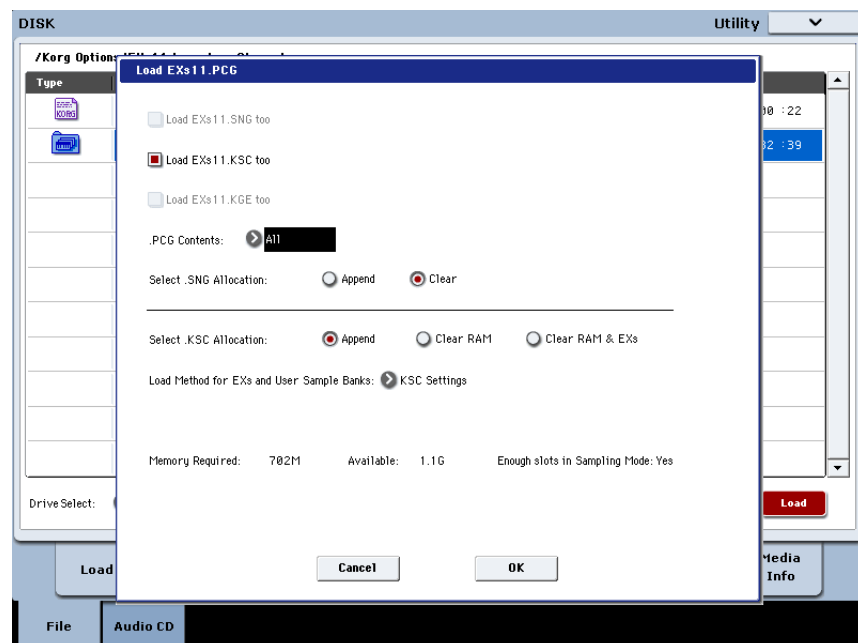
If desired, they can be loaded into different locations as well. For more information, see “Loading the Programs and Combinations into a different bank,” below.

Loading the new sounds and samples

You can load the Programs, Combinations and Wave Sequences into the default locations all at once. To do so:

1. Go to the Disk Load page.
2. Set Drive Select to HDD: INTERNAL HD.
3. Select the Korg Options folder, and press Open.
4. Select the EXs11 Legendary Strings folder, and press Open.
5. Select the file EXs11.PCG.
6. Press the Load button.

A dialog box appears.



7. Enable the check-box labeled Load EXs11.KSC. too.

This will load the samples along with the Programs.

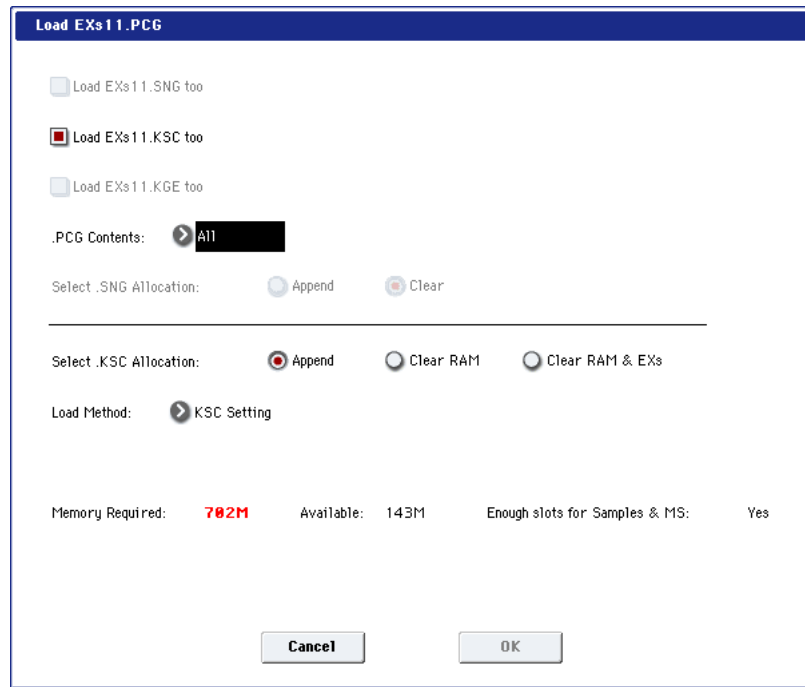
8. Set Select .KSC Allocation to Append, and Load Method to KSC Setting.

9. Leave the .PCG Contents parameter set to All.

Below the other parameters, you'll notice a status line showing the Memory Required and Available. (There's also info about whether or not there are enough slots, but this applies to RAM samples only.)

If the Available value is larger than Memory Required, the text will be in black, and you can proceed.

If the Available value is smaller than Memory Required, it will be shown in red characters. You can free up memory in several different ways; for more information, see "Making room in memory to load EXs11," below.



10. Press OK to load the data.

EXs11 will work in demo mode, fading in and out, until an authorization code is purchased and entered into the KRONOS. For more information, see "Purchasing and authorizing EXs11," below.

Making room in memory to load EXs11

With 3 GB of RAM installed, the KRONOS has more than enough memory available to load EXs11 along with the factory preload. However, if you've loaded additional EXs or RAM samples, there may not be enough space to load EXs11 at the same time.

To clear all RAM samples from within the Load dialog, you can set **Select .KSC Allocation** to **Clear RAM**. This will un-load all RAM samples, while leaving all EXs samples intact. Make sure that you've saved any edited RAM samples before doing this!

Alternatively, you can press the Cancel button and make more detailed changes to the loaded samples. For instance, you can go to the Global P0: Basic Setup-Sample Management page to un-load specific RAM or EXs samples.

Finally, you can revert back to the factory settings by doing the following:

1. **Go to the Global P0: Basic Setup-KSC Auto-Load page.**
2. **Un-check the Auto-Load buttons for all KSCs except for PRELOAD.KSC.**
3. **Press the Do Auto-Load Now button.**

This will first un-load all RAM and EXs samples, and then revert back to the factory settings.

Loading EXs11 with only 2 GB of installed memory

If the KRONOS has only the stock 2 GB of RAM, you can still use EXs11 by temporarily unloading some of the factory samples. Note that any Programs which rely on the unloaded samples will not play correctly.

For example, to unload the EXs5,6,7,8 and 9:

1. Press the GLOBAL button to enter Global mode.
2. Go to the Sample Management page.
3. At the top of the screen, check the value shown as FREE.

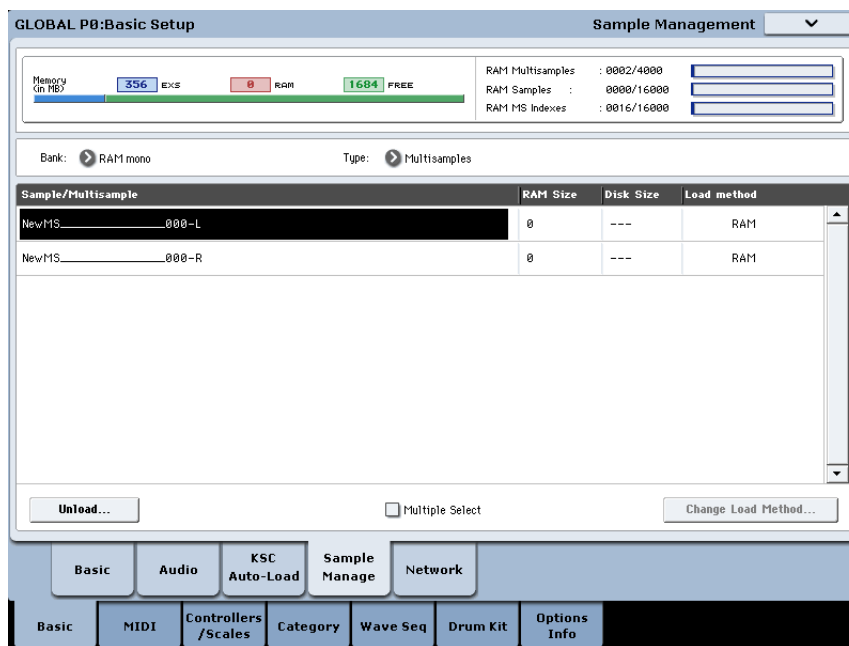
With the standard preload KSC and 2 GB of physical RAM, this will be 138 (MB).

4. Select “Unload all in bank...” from the Page menu command.
5. Select Unload all data from: EXs5.
6. Press the OK button.

The EXs5 data will be unloaded.

7. Repeat steps 4 through 6 for EXs6, 7, 8 and 9.
8. Check that the FREE space has increased to 763 (MB).

The 702 MB of free space for loading EXs11 will have been freed up.



After using EXs11, you can easily revert back to the factory preload. To do so:

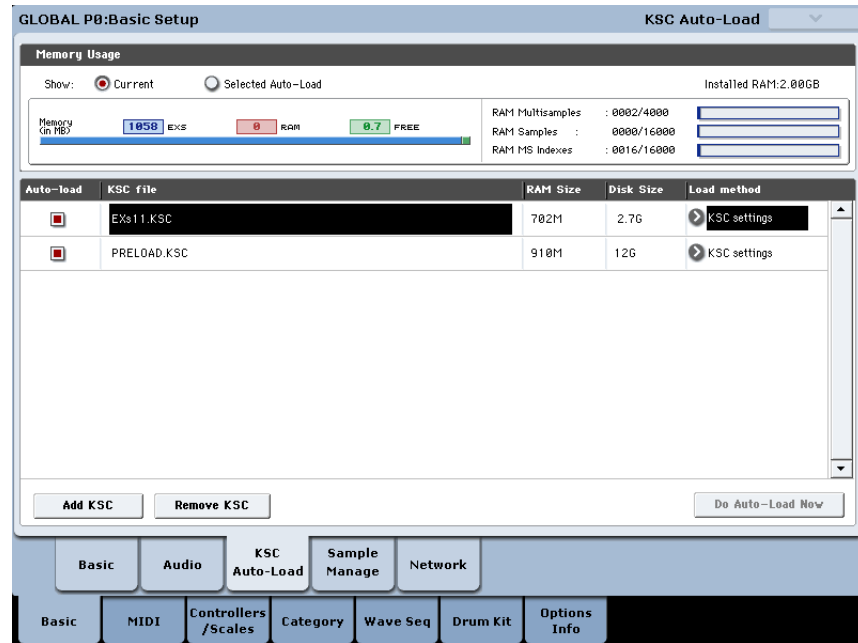
1. Go to the Global P0: Basic Setup–KSC Auto-Load page.
2. Un-check the Auto-Load buttons for all KSCs except for PRELOAD.KSC.
3. Press the Do Auto-Load Now button.

This will first un-load all RAM and EXs samples, and then revert back to the factory settings.

Automatically loading the EXs11 samples at startup

If you like, you can configure the KRONOS to automatically load the EXs11 samples at startup. To do so:

1. Press the GLOBAL button to enter Global mode.
2. Go to the Global Basic-KSC Auto-Load page.
3. In the list of KSCs, check the Auto-load box next to EXs11.KSC.

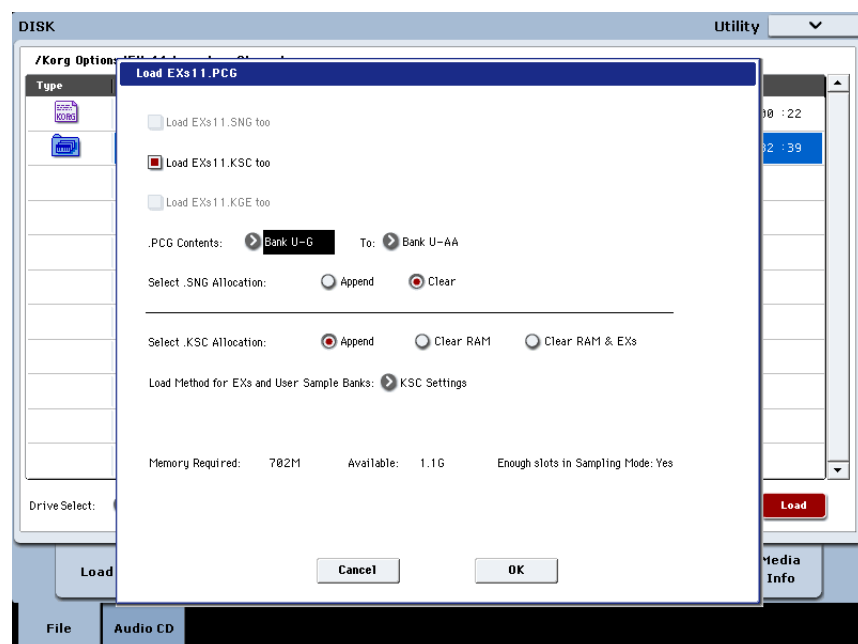


Loading the Programs and Combinations into a different bank

1. Follow steps 1–10 under “Loading the new sounds and samples,” above.
2. Set the .PCG Contents parameter to Bank U-G.

To the right of this parameter, the To parameter will appear.

3. In the To parameter, select the bank to overwrite.



4. Press OK.

The Programs and Combinations will be loaded into the selected bank.

⚠ If you select U-AA through U-GG as the To parameter, the Combinations will not be loaded because banks U-AA through U-GG do not exist in Combination mode. In this case, do the following:

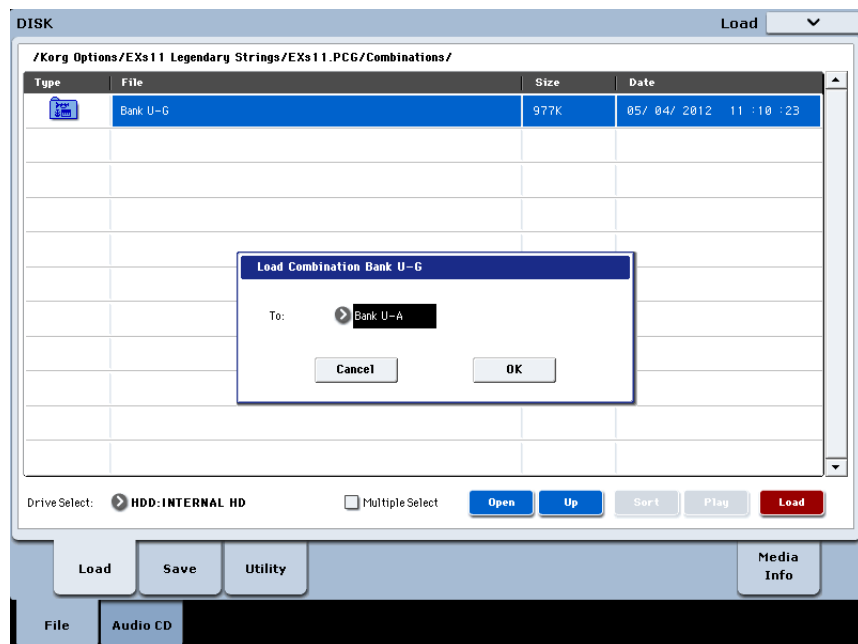
- a. Go to the Disk Load page.
- b. Select the file EXs11.PCG.
- c. Press the Open button.
- d. Select the Combinations folder.
- e. Press the Open button.
- f. Press the Load button.
- g. In the To parameter, select the Combination bank to overwrite.
- h. Press OK.

Next, you'll need to reassign the Program Bank location for this Combination bank.

- i. Press the front panel GLOBAL button to enter Global mode.
- j. Go to the Global P0: Basic Setup–Basic Setup page.
- k. Select “Change all bank references” from the Page menu command.

A dialog box appears.

- l. Enable the check-box labeled Combination.
- m. In the U-G → parameter, select the bank location from step 3 “Loading the Programs and Combinations into a different bank,” above; for example, U-G → U-A.



- n. Press OK.

Loading the Wave Sequences

With this method, you'll need to load the Wave Sequences separately:

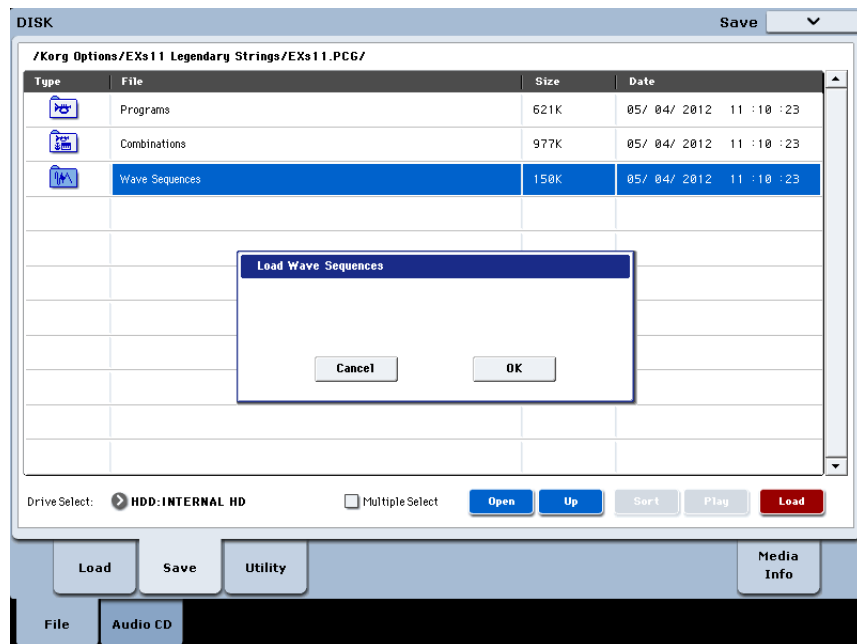
1. Go to the Disk Load page.
2. Select the EXs11.PCG file.
3. Press the Open button.

You'll see three folders: Programs, Combinations and Wave Sequences.

4. Select the Wave Sequences folder.

5. Press the Load button.

A dialog box appears.



6. Press OK.

The Wave Sequences will be loaded into the User bank.

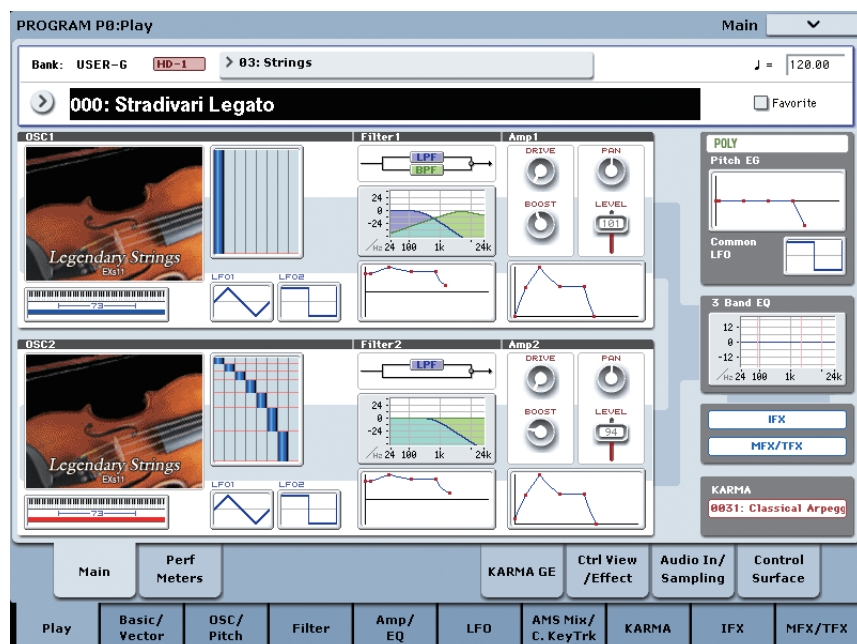
Selecting the new EXs11 sounds

Programs, Combinations

1. Press the PROG or COMBI button to enter Mode.
2. Press the Bank U-G button to select the new bank.

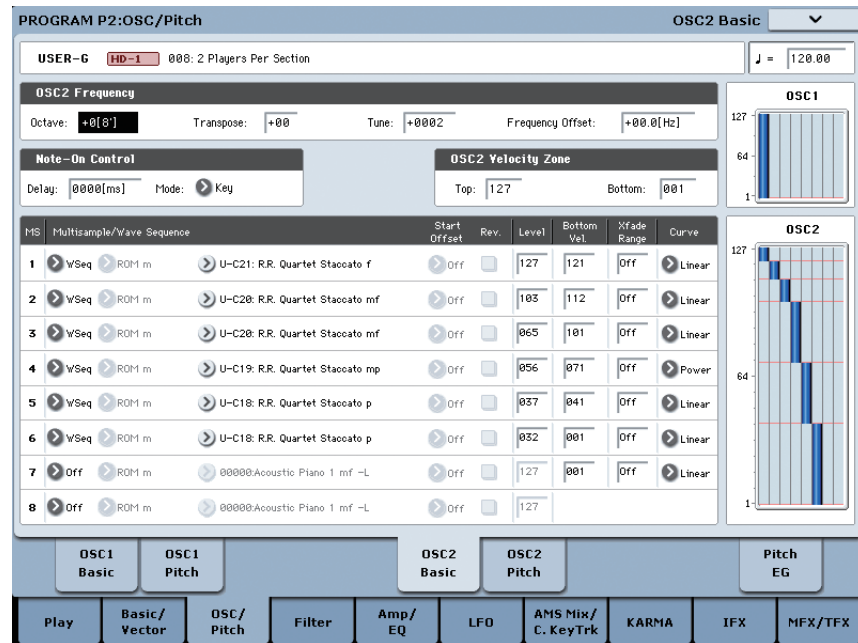
Alternatively, if you loaded into a different bank, press the appropriate Bank button.

3. Use the VALUE inc/dec buttons, the VALUE dial, or the on-screen Select popup to browse through the new sounds.



Wave Sequences

The EXs11 Programs use Wave Sequences to vary the timbre when successive notes are played, enabling more organic expression in comparison to ordinary sample playback. Intricate combinations of Multisamples and Wave Sequences are used to create tremolo and trill effects with free control over tempo, instead of the fixed tempos of standard string libraries.



EXs11 Programs require the factory preload sounds

The EXs11 Programs use Drum Kits and Drum Samples from the factory preload. If the factory banks have been changed, or are not loaded, then the Programs will not sound correctly. If necessary, please first back up your current sounds, and then re-load the factory sounds. The factory sounds are stored in the files named PRELOAD.PCG and PRELOAD.KSC in the FACTORY folder on the internal disk.

Purchasing and authorizing EXs11

EXs10 will work in demo mode, fading in and out, until an authorization code is purchased and entered into the KRONOS. To do so:

1. Go to the Global P6: Options Info page.
2. Write down the Public ID, as shown at the top of the display.
Make sure that you've copied it accurately.
3. If you have access to the internet, follow the instructions under "Purchasing option licenses via the internet," below.
or:
If you do not have internet access, follow the instructions under "Purchasing option licenses from your Korg distributor," below.

Purchasing option licenses via the internet

1. Go to <http://www.korg.com/kronos>
2. Log in under your registered member name.

If you aren't already registered, follow the online instructions for registering as a member of www.korg.com. After registering as a member, register your KRONOS.

3. Purchase the authorization code for EXs11 Option.
4. After purchasing, you'll receive your authorization code. Note that this code is tied to your Public ID, and will not work on other KRONOS systems.

If you have more than one KRONOS, you'll need to purchase authorizations for each one separately.

5. Once you have the authorization code, follow the instructions under "Authorizing options on the KRONOS," below.

Purchasing option licenses from your Korg distributor

If you do not have access to the internet, your national Korg distributor will be happy to assist you in purchasing option authorization codes.

1. Contact your Korg distributor, and ask them for assistance with purchasing option authorizations for the KRONOS.

You can find contact information for your Korg distributor by contacting your Korg dealer, or from the following page on the Korg website:
<http://www.korg.co.jp/English/index.html>

2. After you purchase the authorization code(s), proceed to "Authorizing options on the KRONOS," below.

Authorizing options on the KRONOS

1. Go to the Global P6: Options Info page.
2. Select the option to authorize from the list of Installed Options.
3. Press the Authorize Selected button.

The Authorize Selected window will appear.

4. Enter the authorization code.

You'll see the name of the selected option or option bundle at the top of the window. The window also includes an onscreen keyboard, so that you can enter your authorization code.

5. Press OK.

Provided that you entered a valid authorization code, the list will now show the option or option bundle as Authorized, and the audio limitations of Demo mode will be removed.

Support

If you have any questions about the KRONOS Sound Libraries, please contact your national Korg distributor.

You can find contact information for all Korg distributors, world-wide, on the Korg website: <http://www.korg.co.jp/English/Distributors/>

Voice Name List

Combinations

Bank USER-G

#	Name	Category	Sub Category
000	Orchestra Of Dreams	Orchestral	Large
001	Piano & Strings	Keyboard	A.Piano
002	Strings & Bells	Bell/Mallet/Perc	Bell
003	Guitar & Strings	Guitar/Plucked	A.Guitar
004	Prayerful Voices	Pads/Vocal	Vocal
005	Strings & Brass 1	Orchestral	Large
006	World Peace Split	World	World
007	Percussive Orchestra	Orchestral	Large
008	Strings & Orchestra	Orchestral	Large
009	Strings & Woodwinds	Orchestral	Large
010	Strings & Clarinets	Orchestral	Large
011	Strings & Horns	Orchestral	Large
012	Strings & Brass 2	Orchestral	Large
013	Studio String/Brass Mix	Brass/Reed	Brass
014	Sfz Brass & Strings	Brass/Reed	Brass
015	Sfz Brass/Tremolo String	LeadSplits	Natural Lead
016	Brass/String Split	LeadSplits	Natural Lead
017	Strings & Vibraphone	Bell/Mallet/Perc	Mallet
018	Voices & Strings	Pads/Vocal	Vocal
019	Hollywood Orchestra	Orchestral	Large
020	Crescendo Orchestra	Orchestral	Large
021	Arco Orchestra	Orchestral	Large
022	Bass/E.Piano & Strings	BassSplits	Keyboard Type
023	Disco Strings Split	LeadSplits	Natural Lead
024	6 Violins & Tape Strings	Strings	Medium
025	Tape Brass/String Split	LeadSplits	Natural Lead
026	Analog + Solo String Mix	Strings	Small
027	CBass/Cello/Viola/Violin	Strings	Small
028	Violin & Cello Concerto	Strings	Medium
029	Contrabasses & Cellos	Strings	Medium
030	Overdubbing Sections	Strings	Medium
031	String Concerto	Strings	Large
032	EXs11 String Mix	Strings	Large
033	Starlight Strings	Strings	Large
034	UK String Section	Strings	Medium
035	Dynamic Film Strings	Strings	Large
036	Octabass Strings	Strings	Large
037	Chamber Arco Strings	Strings	Small
038	Ensemble & Violin Split	LeadSplits	Natural Lead
039	4 Violins Selector VJS	Strings	Small
040	Stradivari Selector VJS	Strings	Small
041	ViolaA Selector VJS	Strings	Small
042	CelloG Selector VJS	Strings	Small
043	Contrabass Selector VJS	Strings	Small
044	Strings Conductor VJS	Strings	Large
045	Symphonic Staccato	Strings	Medium
046	Pizzicato Ensemble	Strings	Medium
047	Tremolo String Ensemble	Strings	Large

Programs

Bank USER-G [HD-1]

#	OSC	Name	Category	Sub Category
000	d	Stradivari Legato	Strings	Solo
001	d	CelloG Legato	Strings	Solo
002	d	Small Pop Strings	Strings	Ensemble
003	d	Medium Orchestra Tremolo	Strings	Ensemble
004	d	Slow Pop Strings	Strings	Ensemble
005	d	Dynamic Strings	Strings	Ensemble
006	d	Irelandance Staccato	Strings	Ensemble
007	d	Sympho Violins GlissUp	Strings	Ensemble
008	d	2 Players Per Section	Strings	Ensemble
009	d	6ViolinsA Trill SW2 H/W	Strings	Ensemble
010	d	Medium Orchestra Pizz	Strings	Ensemble
011	d	Pop String Ensemble	Strings	Ensemble
012	d	ViolinA Legato	Strings	Solo
013	d	ViolinG	Strings	Solo
014	d	ViolinT	Strings	Solo
015	d	Stradivari Staccato	Strings	Solo
016	d	ViolinA Staccato	Strings	Solo
017	d	Stradivari Pizzicato	Strings	Solo
018	d	ViolinA Pizzicato	Strings	Solo
019	d	Stradivari Tremolo	Strings	Solo
020	d	ViolinA Tremolo	Strings	Solo
021	d	Stradivari Trill SW2 H/W	Strings	Solo
022	d	ViolinA Trill SW2 H/W	Strings	Solo
023	d	Stradivari GlissUp	Strings	Solo
024	d	ViolaA	Strings	Solo
025	d	ViolaK	Strings	Solo
026	d	ViolaA Staccato	Strings	Solo
027	d	ViolaA Pizzicato	Strings	Solo
028	d	ViolaA Tremolo	Strings	Solo
029	d	ViolaA Trill SW2 H/W	Strings	Solo
030	d	ViolaA GlissUp	Strings	Solo
031	d	CelloD	Strings	Solo
032	d	CelloG Mute	Strings	Solo
033	d	CelloG Staccato	Strings	Solo
034	d	CelloG Pizzicato	Strings	Solo
035	d	CelloG Tremolo	Strings	Solo
036	d	CelloG Trill SW2 H/W	Strings	Solo
037	d	CelloG GlissUp	Strings	Solo
038	d	Contrabass Legato	Strings	Solo
039	d	Contrabass Mute	Strings	Solo
040	d	Contrabass Staccato	Strings	Solo
041	d	Contrabass Pizzicato	Strings	Solo
042	d	Contrabass Tremolo	Strings	Solo
043	d	Contrabass Trill SW2 H/W	Strings	Solo
044	d	Contrabass GlissUp	Strings	Solo
045	d	Quartet1 Legato	Strings	Solo
046	d	Quartet2	Strings	Solo
047	d	Quartet Staccato	Strings	Solo
048	d	Quartet1 Pizzicato	Strings	Solo
049	d	Quartet2 Pizzicato	Strings	Solo
050	d	Quartet1 Tremolo	Strings	Solo
051	d	Quartet2 Tremolo	Strings	Solo
052	d	Quartet Tempo Tremolo	Strings	Solo
053	d	Quartet Manual Tremolo	Strings	Solo
054	d	Quartet1 Velo Trill SW2	Strings	Solo
055	d	Quartet2 Velo Trill SW2	Strings	Solo
056	d	3 Slow Stradivari	Strings	Ensemble
057	d	3 ViolinsA Legato	Strings	Ensemble
058	d	4 ViolinsG	Strings	Ensemble
059	d	12 ViolinsT	Strings	Ensemble
060	d	6 ViolinsT Mute	Strings	Ensemble
061	d	4 Violin Ensemble	Strings	Ensemble
062	d	Symphonic Violin Ens	Strings	Ensemble
063	d	Violin Ensemble + Muted	Strings	Ensemble

↑ s: single program, d: double program

#	OSC	Name	Category	Sub Category
064	d	4 ViolinsA Diminuendo	Strings	Ensemble
065	d	16 ViolinsA Diminuendo	Strings	Ensemble
066	d	3 ViolinsA Pizzicato	Strings	Ensemble
067	d	6 Stradivari Pizzicato	Strings	Ensemble
068	d	3 Violins Tremolo	Strings	Ensemble
069	d	9 ViolinsA Tremolo	Strings	Ensemble
070	d	3 ViolasA	Strings	Ensemble
071	d	3 ViolasK	Strings	Ensemble
072	d	9 ViolasA	Strings	Ensemble
073	d	12 ViolasA Pizzicato	Strings	Ensemble
074	d	3 ViolasA Tremolo	Strings	Ensemble
075	d	9 ViolasA Tremolo	Strings	Ensemble
076	d	2 Cellos	Strings	Ensemble
077	d	4 CellosG	Strings	Ensemble
078	d	3 CellosG Mute	Strings	Ensemble
079	d	6 Cellos Mute	Strings	Ensemble
080	d	2 CellosG Pizzicato	Strings	Ensemble
081	d	4 CellosG Pizzicato	Strings	Ensemble
082	d	8 Cellos Tremolo	Strings	Ensemble
083	d	4 Contrabasses	Strings	Ensemble
084	d	4 Contrabasses Mute	Strings	Ensemble
085	d	4 Contrabasses Pizzicato	Strings	Ensemble
086	d	4 Contrabasses TempoTrem	Strings	Ensemble
087	d	Small Chamber no Viola	Strings	Ensemble
088	d	Medium Chamber no Viola	Strings	Ensemble
089	d	Med Chamber no Viola Leg	Strings	Ensemble
090	d	Big Chamber no Viola	Strings	Ensemble
091	d	Big Chamber no Viola Leg	Strings	Ensemble
092	d	Chamber Strings no Viola	Strings	Ensemble
093	d	Small Chamber Strings	Strings	Ensemble
094	d	Medium Chamber Strings	Strings	Ensemble
095	d	Dynamic Solo to Chamber	Strings	Ensemble
096	d	4 Players Per Section	Strings	Ensemble
097	d	16 Players Per Section	Strings	Ensemble
098	d	Rosin Strings	Strings	Ensemble
099	d	Film Strings	Strings	Ensemble
100	d	Warm Strings	Strings	Ensemble
101	d	Silky Strings	Strings	Ensemble
102	d	Symphonic Strings	Strings	Ensemble
103	d	Sympho Strings Legato	Strings	Ensemble
104	d	Sympho Octave Strings	Strings	Ensemble
105	d	Octave Strings Legato	Strings	Ensemble
106	d	Crossfade Strings	Strings	Ensemble
107	d	Expressive Chambers	Strings	Ensemble
108	d	Expressive Strings	Strings	Ensemble
109	d	Slow String Ensemble	Strings	Ensemble
110	d	Dynamic Staccato Ens	Strings	Ensemble
111	d	Octave Staccato Ens	Strings	Ensemble
112	d	Small Orchestra Pizz	Strings	Ensemble
113	d	Large Orchestra Pizz	Strings	Ensemble
114	d	Small Orchestra Tremolo	Strings	Ensemble
115	d	Large Orchestra Tremolo	Strings	Ensemble
116	d	ChamberStrings TempoTrem	Strings	Ensemble
117	d	Sympho Strings TempoTrem	Strings	Ensemble
118	d	Murmur Pop Strings	Strings	Ensemble
119	d	Medium Pop Strings	Strings	Ensemble
120	d	Large Pop Strings	Strings	Ensemble
121	d	Zaza Strings1	Strings	Ensemble
122	d	Zaza Strings2	Strings	Ensemble
123	d	Response Strings1	Strings	Ensemble
124	d	Response Strings2	Strings	Ensemble
125	d	Response Strings3	Strings	Ensemble
126	d	Not But Strings	Strings	Ensemble
127	s	Velocity Disco Strings	Strings	Ensemble

↑ s: single program, d: double program

Multisamples

#	Name
0000	Stradivari Vibrato-L
0001	Stradivari Vibrato-R
0002	Stradivari Arco p
0003	Stradivari Arco mp
0004	Stradivari Arco mf
0005	Stradivari Arco f
0006	Stradivari Arco ff
0007	Stradivari Pizzicato-L
0008	Stradivari Pizzicato-R
0009	Stradivari Tremolo-L
0010	Stradivari Tremolo-R
0011	Stradivari Trill H.Stp-L
0012	Stradivari Trill H.Stp-R
0013	Stradivari Trill W.Stp-L
0014	Stradivari Trill W.Stp-R
0015	Stradivari Gliss Up-L
0016	Stradivari Gliss Up-R
0017	ViolinA Vibrato-L
0018	ViolinA Vibrato-R
0019	ViolinA Arco p
0020	ViolinA Arco mp
0021	ViolinA Arco mf
0022	ViolinA Arco f
0023	ViolinA Pizzicato-L
0024	ViolinA Pizzicato-R
0025	ViolinA Tremolo-L
0026	ViolinA Tremolo-R
0027	ViolinA Trill H.Step-L
0028	ViolinA Trill H.Step-R
0029	ViolinA Trill W.Step-L
0030	ViolinA Trill W.Step-R
0031	ViolinG Vibrato-L
0032	ViolinG Vibrato-R
0033	ViolinT Vibrato-L
0034	ViolinT Vibrato-R
0035	ViolaA Vibrato-L
0036	ViolaA Vibrato-R
0037	ViolaA Arco p
0038	ViolaA Arco mp
0039	ViolaA Arco mf
0040	ViolaA Arco f
0041	ViolaA Pizzicato-L
0042	ViolaA Pizzicato-R
0043	ViolaA Tremolo-L
0044	ViolaA Tremolo-R
0045	ViolaA Trill H.Step-L
0046	ViolaA Trill H.Step-R
0047	ViolaA Trill W.Step-L
0048	ViolaA Trill W.Step-R
0049	ViolaA Gliss Up-L
0050	ViolaA Gliss Up-R
0051	ViolaK Vibrato-L
0052	ViolaK Vibrato-R
0053	CelloG Vibrato-L
0054	CelloG Vibrato-R
0055	CelloG Muted Vibrato-L
0056	CelloG Muted Vibrato-R
0057	CelloG Arco p
0058	CelloG Arco mp
0059	CelloG Arco mf
0060	CelloG Arco f
0061	CelloG Pizzicato-L
0062	CelloG Pizzicato-R
0063	CelloG Tremolo-L
0064	CelloG Tremolo-R
0065	CelloG Trill H.Step-L
0066	CelloG Trill H.Step-R
0067	CelloG Trill W.Step-L
0068	CelloG Trill W.Step-R

#	Name
0069	CelloG Gliss Up-L
0070	CelloG Gliss Up-R
0071	CelloD Vibrato-L
0072	CelloD Vibrato-R
0073	C.Bass Vibrato-L
0074	C.Bass Vibrato-R
0075	C.Bass Muted Vibrato-L
0076	C.Bass Muted Vibrato-R
0077	C.Bass Arco p
0078	C.Bass Arco mp
0079	C.Bass Arco mf
0080	C.Bass Arco f
0081	C.Bass Pizzicato-L
0082	C.Bass Pizzicato-R
0083	C.Bass Tremolo-L
0084	C.Bass Tremolo-R
0085	C.Bass Trill H.Step-L
0086	C.Bass Trill H.Step-R
0087	C.Bass Trill W.Step-L
0088	C.Bass Trill W.Step-R
0089	C.Bass Gliss Up-L
0090	C.Bass Gliss Up-R
0091	String Quartet1-L
0092	String Quartet1-R
0093	String Quartet2-L
0094	String Quartet2-R
0095	String Quartet Arco p
0096	String Quartet Arco mp
0097	String Quartet Arco mf
0098	String Quartet Arco f
0099	Str.Quartet Pizzicato1-L
0100	Str.Quartet Pizzicato1-R
0101	Str.Quartet Pizzicato2-L
0102	Str.Quartet Pizzicato2-R
0103	Str.Quartet Tremolo1-L
0104	Str.Quartet Tremolo1-R
0105	Str.Quartet Tremolo2-L
0106	Str.Quartet Tremolo2-R
0107	3 Slow Stradivari-L
0108	3 Slow Stradivari-R
0109	4 Stradivari Arco p-L
0110	4 Stradivari Arco p-R
0111	4 Stradivari Arco mp-L
0112	4 Stradivari Arco mp-R
0113	4 Stradivari Arco mf-L
0114	4 Stradivari Arco mf-R
0115	4 Stradivari Arco f-L
0116	4 Stradivari Arco f-R
0117	4 Stradivari Arco ff-L
0118	4 Stradivari Arco ff-R
0119	6 Stradivari Pizzicato-L
0120	6 Stradivari Pizzicato-R
0121	3 ViolinsA-L
0122	3 ViolinsA-R
0123	4 ViolinsA Arco p-L
0124	4 ViolinsA Arco p-R
0125	4 ViolinsA Arco mp-L
0126	4 ViolinsA Arco mp-R
0127	4 ViolinsA Arco mf-L
0128	4 ViolinsA Arco mf-R
0129	4 ViolinsA Arco f-L
0130	4 ViolinsA Arco f-R
0131	4 ViolinsA Diminuendo-L
0132	4 ViolinsA Diminuendo-R
0133	16 ViolinsA Diminuendo-L
0134	16 ViolinsA Diminuendo-R
0135	4 ViolinsA Pizzicato-L
0136	4 ViolinsA Pizzicato-R
0137	9 ViolinsA Tremolo-L

#	Name
0138	9 ViolinsA Tremolo-R
0139	6 ViolinsA Trill H.Stp-L
0140	6 ViolinsA Trill H.Stp-R
0141	6 ViolinsA Trill W.Stp-L
0142	6 ViolinsA Trill W.Stp-R
0143	12 ViolinsA Gliss Up-L
0144	12 ViolinsA Gliss Up-R
0145	4 ViolinsG-L
0146	4 ViolinsG-R
0147	12 ViolinsT-L
0148	12 ViolinsT-R
0149	6 Muted ViolinsT-L
0150	6 Muted ViolinsT-R
0151	4 Violin Ensemble-L
0152	4 Violin Ensemble-R
0153	Violin Ens. & ViolinA-L
0154	Violin Ens. & ViolinA-R
0155	Violin Ens & Muted Ens-L
0156	Violin Ens & Muted Ens-R
0157	Muted Violin Ensemble-L
0158	Muted Violin Ensemble-R
0159	Symphonic Violin Ens.1-L
0160	Symphonic Violin Ens.1-R
0161	Symphonic Violin Ens.2-L
0162	Symphonic Violin Ens.2-R
0163	3 Violins Tremolo-L
0164	3 Violins Tremolo-R
0165	Glide Down Violins-L
0166	Glide Down Violins-R
0167	3 ViolasA-L
0168	3 ViolasA-R
0169	9 ViolasA-L
0170	9 ViolasA-R
0171	4 ViolasA Arco p-L
0172	4 ViolasA Arco p-R
0173	4 ViolasA Arco mp-L
0174	4 ViolasA Arco mp-R
0175	4 ViolasA Arco mf-L
0176	4 ViolasA Arco mf-R
0177	4 ViolasA Arco f-L
0178	4 ViolasA Arco f-R
0179	12 ViolasA Pizzicato-L
0180	12 ViolasA Pizzicato-R
0181	3 ViolasA Tremolo-L
0182	3 ViolasA Tremolo-R
0183	9 ViolasA Tremolo-L
0184	9 ViolasA Tremolo-R
0185	3 ViolasK-L
0186	3 ViolasK-R
0187	4 CellosG-L
0188	4 CellosG-R
0189	3 Muted CellosG-L
0190	3 Muted CellosG-R
0191	8 CellosG Arco p-L
0192	8 CellosG Arco p-R
0193	8 CellosG Arco mp-L
0194	8 CellosG Arco mp-R
0195	8 CellosG Arco mf-L
0196	8 CellosG Arco mf-R
0197	8 CellosG Arco f-L
0198	8 CellosG Arco f-R
0199	4 CellosG Pizzicato-L
0200	4 CellosG Pizzicato-R
0201	3 CellosD-L
0202	3 CellosD-R
0203	8 Cellos Tremolo-L
0204	8 Cellos Tremolo-R
0205	3 C.Basses-L
0206	3 C.Basses-R

#	Name
0207	4 C.Basses Arco p-L
0208	4 C.Basses Arco p-R
0209	4 C.Basses Arco mp-L
0210	4 C.Basses Arco mp-R
0211	4 C.Basses Arco mf-L
0212	4 C.Basses Arco mf-R
0213	4 C.Basses Arco f-L
0214	4 C.Basses Arco f-R
0215	4 C.Basses Pizzicato-L
0216	4 C.Basses Pizzicato-R
0217	2 C.Basses Tremolo-L
0218	2 C.Basses Tremolo-R
0219	Small Chamber no Viola-L
0220	Small Chamber no Viola-R
0221	Med. Chamber no Viola-L
0222	Med. Chamber no Viola-R
0223	Big Chamber no Viola-L
0224	Big Chamber no Viola-R
0225	String Ens. no Viola-L
0226	String Ens. no Viola-R
0227	Small Chamber Strings-L
0228	Small Chamber Strings-R
0229	Big Chamber Strings-L
0230	Big Chamber Strings-R
0231	2 Players per Section-L
0232	2 Players per Section-R
0233	4 Players per Section-L
0234	4 Players per Section-R
0235	16 Players per Section-L
0236	16 Players per Section-R
0237	Symphonic String Ens p-L
0238	Symphonic String Ens p-R
0239	Symphonic String Ens f-L
0240	Symphonic String Ens f-R
0241	Med. Orchestra Strings-L
0242	Med. Orchestra Strings-R
0243	Big Orchestra Strings-L
0244	Big Orchestra Strings-R
0245	Smooth Str. Ens. Close-L
0246	Smooth Str. Ens. Close-R
0247	Smooth String Ens. Far-L
0248	Smooth String Ens. Far-R
0249	Chamber Str. Arco p-L
0250	Chamber Str. Arco p-R
0251	Chamber Str. Arco mp-L
0252	Chamber Str. Arco mp-R
0253	Chamber Str. Arco mf-L
0254	Chamber Str. Arco mf-R
0255	Chamber Str. Arco f-L
0256	Chamber Str. Arco f-R
0257	Symphonic Str. Arco p-L
0258	Symphonic Str. Arco p-R
0259	Symphonic Str. Arco mp-L
0260	Symphonic Str. Arco mp-R
0261	Symphonic Str. Arco mf-L
0262	Symphonic Str. Arco mf-R
0263	Symphonic Str. Arco f-L
0264	Symphonic Str. Arco f-R
0265	Small Str. Pizzicato-L
0266	Small Str. Pizzicato-R
0267	Medium Str. Pizzicato-L
0268	Medium Str. Pizzicato-R
0269	Small Str. Tremolo-L
0270	Small Str. Tremolo-R
0271	Medium Str. Tremolo-L
0272	Medium Str. Tremolo-R
0273	Big Str. Tremolo-L
0274	Big Str. Tremolo-R

Wave Sequences

Bank USER-B

#	Name
0000	Looped Strad Vibrato-L
0001	Looped Strad Vibrato-R
0002	R.R. Strad Staccato p
0003	R.R. Strad Staccato mp
0004	R.R. Strad Staccato mf
0005	R.R. Strad Staccato f
0006	R.R. Strad Staccato ff
0007	R.R. Strad Pizzicato
0008	Strad Trill Half/Whole
0009	Strad Sustain/GlissUp
0010	Strad Silence/Sustain
0011	Looped ViolinA Vibrato
0012	R.R. ViolinA Staccato p
0013	R.R. ViolinA Staccato mp
0014	R.R. ViolinA Staccato mf
0015	R.R. ViolinA Staccato f
0016	R.R. ViolinA Pizzicato
0017	ViolinA Trill Half/Whole
0018	Looped ViolaA Vibrato-L
0019	Looped ViolaA Vibrato-R
0020	R.R. ViolaA Staccato p
0021	R.R. ViolaA Staccato mp
0022	R.R. ViolaA Staccato mf
0023	R.R. ViolaA Staccato f
0024	R.R. ViolaA Pizzicato
0025	ViolaA Trill Half/Whole
0026	ViolaA Sustain/GlissUp
0027	ViolaA Silence/Sustain
0028	Looped CelloG Vibrato-L
0029	Looped CelloG Vibrato-R
0030	Looped CelloG Muted Vib
0031	R.R. CelloG Staccato p

Bank USER-C

#	Name
0000	R.R. CelloG Staccato mp
0001	R.R. CelloG Staccato mf
0002	R.R. CelloG Staccato f
0003	R.R. CelloG Pizzicato
0004	CelloG Trill Half/Whole
0005	CelloG Sustain/GlissUp
0006	CelloG Silence/Sustain
0007	Looped CBass Vibrato-L
0008	Looped CBass Vibrato-R
0009	Looped CBass Muted Vib
0010	R.R. CBass Staccato p
0011	R.R. CBass Staccato mp
0012	R.R. CBass Staccato mf
0013	R.R. CBass Staccato f
0014	R.R. CBass Pizzicato
0015	CBass Trill Half/Whole
0016	CBass Sustain/GlissUp
0017	CBass Silence/Sustain
0018	R.R. Quartet Staccato p
0019	R.R. Quartet Staccato mp
0020	R.R. Quartet Staccato mf
0021	R.R. Quartet Staccato f
0022	R.R. Quartet1 Pizzicato
0023	R.R. Quartet2 Pizzicato
0024	Quartet TempoTrem p
0025	Quartet TempoTrem mp
0026	Quartet TempoTrem mf
0027	Quartet TempoTrem f
0028	Quartet1 TempoTrill
0029	Quartet2 TempoTrill
0030	R.R. 4Strads Staccato p
0031	R.R. 4Strads Staccato mp

Bank USER-D

#	Name
0000	R.R. 4Strads Staccato mf
0001	R.R. 4Strads Staccato f
0002	R.R. 4Strads Staccato ff
0003	R.R. 6Strads Pizzicato
0004	R.R. 3ViolinsA Stacc p
0005	R.R. 3ViolinsA Stacc mp
0006	R.R. 3ViolinsA Stacc mf
0007	R.R. 3ViolinsA Stacc f
0008	R.R. 3ViolinsA Pizzicato
0009	6VlinsA Trill Half/Whole
0010	Sympho Vlins1/Tremolo
0011	Sympho Vlins1/GlissUp
0012	Symph Vlins1 Silence/Sus
0013	R.R. 4ViolasA Stacc p
0014	R.R. 4ViolasA Stacc mp
0015	R.R. 4ViolasA Stacc mf
0016	R.R. 4ViolasA Stacc f
0017	R.R. 12ViolasA Pizzicato
0018	R.R. 8CellosG Stacc p
0019	R.R. 8CellosG Stacc mp
0020	R.R. 8CellosG Stacc mf
0021	R.R. 8CellosG Stacc f
0022	R.R. 4CellosG Pizzicato
0023	R.R. 4CBasses Stacc p
0024	R.R. 4CBasses Stacc mp
0025	R.R. 4CBasses Stacc mf
0026	R.R. 4CBasses Stacc f
0027	R.R. 4CBasses Pizzicato
0028	4CBasses TempoTrem p
0029	4CBasses TempoTrem mp
0030	4CBasses TempoTrem mf
0031	4CBasses TempoTrem f

Bank USER-D

#	Name
0000	R.R. Chamber Staccato p
0001	R.R. Chamber Staccato mp
0002	R.R. Chamber Staccato mf
0003	R.R. Chamber Staccato f
0004	R.R. Sympho Staccato p
0005	R.R. Sympho Staccato mp
0006	R.R. Sympho Staccato mf
0007	R.R. Sympho Staccato f
0008	R.R. Small Orch. Pizz
0009	R.R. Medium Orch. Pizz
0010	Chamber TempoTrem p
0011	Chamber TempoTrem mp
0012	Chamber TempoTrem mf
0013	Chamber TempoTrem f
0014	Sympho TempoTrem p
0015	Sympho TempoTrem mp
0016	Sympho TempoTrem mf
0017	Sympho TempoTrem f
0018	Looped Tape Brass
0019	Looped Tape Flute
0020	Looped Tape 8Voice Choir
0021	Looped Tape Boys Choir
0022	Looped Tape 3 Violins 1
0023	Looped Tape 3 Violins 2
0024	Looped Tape 16 Violins
0025	Looped Tape String+Brass

CHIMEI

CHI MEI CULTURE FOUNDATION

Stradivari, one of the world's most valuable instruments, was recorded with the cooperation of Chi Mei Fine Art Ltd. The recording session was coordinated by Michele Paciulli.

Chi Mei Fine Art Ltd.

Established in 1992, the Chi Mei Museum reflects the ideals of founder Mr. Shi Wen-long — “an education in the arts should begin from the appreciation and exposure to wonderful objects and events in the creation and pursuit of happiness in life.” Chi Mei Fine Art Ltd. was formed in 1997 to help the public relive the emotions they experienced while viewing the original works at the museum.

<http://www.chimeimuseum.com/english/index.aspx>