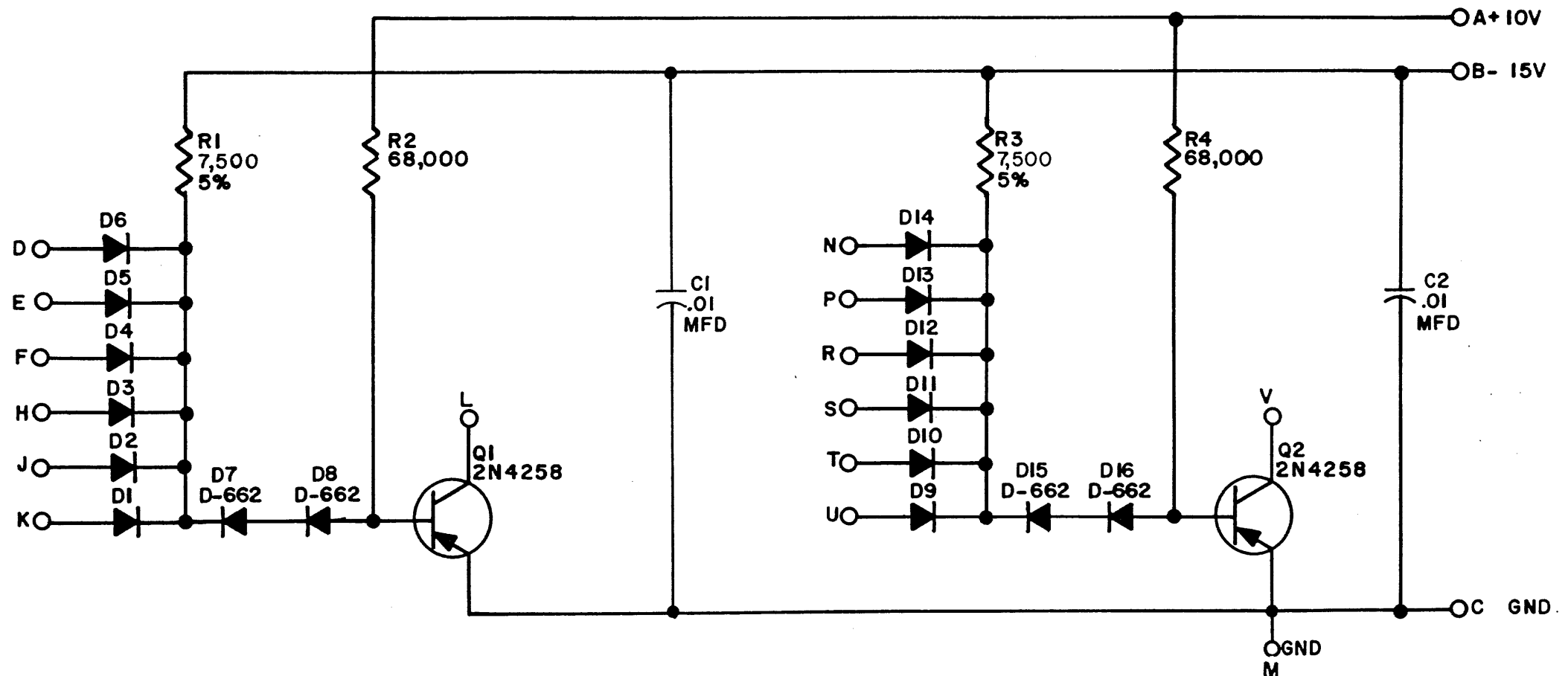


THIS SCHEMATIC IS FURNISHED ONLY FOR TEST AND MAINTENANCE PURPOSES. THE CIRCUITS ARE PROPRIETARY IN NATURE AND SHOULD BE TREATED ACCORDINGLY. COPYRIGHT 1966 BY DIGITAL EQUIPMENT CORPORATION



UNLESS OTHERWISE INDICATED:  
 RESISTORS ARE 1/4W; 10%  
 DIODES ARE D-664

USE THE ETCH BOARD OF THE B117



REVISIONS CHK CHG NO. REV. 5660 A 5915 B	DRN <i>M. Sullivan</i>	DATE 9/1/66	TRANSISTOR & DIODE CONVERSION CHART				<b>digital</b> EQUIPMENT CORPORATION MAYNARD, MASSACHUSETTS	TITLE DIODE GATE B137			
	CHK'D <i>R. Silverman</i>	DATE 9/2/66	DEC	EIA	DEC	EIA		SIZE	CODE	NUMBER	REV.
	ENG. <i>D. O'Connor</i>	DATE 9/6/66	2N4258	2N4258				B	CS	B137-0-1	B
	PROD.	DATE	D662	IN645				PRINTED CIRCUIT REV. C			
			D664	IN3606							